

SERVICE UPDATE

<u>Name of Function:</u>	Operations, Waste & Recycling Service
<u>Date:</u>	01/03/23
<u>Title of Update:</u>	Altens East Recycling & Resource Facility Fire Update
<u>Report Author:</u>	Pam Walker, Waste & Recycling Manager
<u>Chief Officer:</u>	Mark Reilly, Chief Officer, Operations & Protective Services
<u>Contact Details:</u>	PWalker@aberdeencity.gov.uk

UPDATE

The purpose of this briefing is to provide an update to the Committee members on the contingency arrangements and the rebuild progress following the fire at Altens East Recycling & Resource Facility on 8th July 2022.

1.0 Background

The Council's Altens East Recycling & Resource Facility was severely damaged due to a serious fire over the weekend of 8th July 2022.

The fire resulted in the entire facility being out of use since that date and all Council operations were relocated that same weekend.

The Altens facility is owned by Aberdeen City Council, however the RDF and MRF facilities are operated by SUEZ as part of the waste management services contract. The collection services are operated by Aberdeen City Council.

Work has been ongoing on the recovery from this event and the continued management of the contingency operations since July, and a Service Update was last provided in December 2022.

2.0 Contingency Arrangements

2.1 ACC Waste & Recycling Service

The waste and recycling collection service is still currently operating from Kittybrewster depot.

However, significant work has been done to enable the collection service to relocate to Altens. Although the main building and staff parking area are still not accessible, the LGV parking area is usable and under the control of ACC.

Portacabins were installed in February to provide supervisor offices and welfare facilities for the collection crews. The final details are being refined and the collection service is expected to move back to Altens in March. This will mean the refuse collection fleet and the team will return to working from Altens as before. Space will be limited and every effort has been made to make the best use of the space available.

Attached are some pictures to illustrate these new temporary arrangements (Appendix 1).

The remaining office/support staff will still have access to desk space at Marischal College and Kittybrewster, or are working from home.

2.2 Recycling Treatment Services (SUEZ)

The mixed recyclables that previously were sorted for recycling at Altens are still being delivered to a local contractor in Aberdeen where they are then sent south to Hartlepool for sorting and processing. SUEZ are continuing to look for ways to improve the contingency operations. This process is impacting on the Council's recycling rate as there are limitations on the level of recovery of materials that can be achieved without the Altens facility.

2.3 Altens Rebuild and Repair

It was relatively quickly established that the materials recycling facility (MRF - the part of the building that housed the sorting equipment that dealt with the mixed recycling) was damaged beyond repair and would require demolition. The adjoining (but separate) building that housed the refuse derived fuel (RDF) equipment that previously dealt with the residual waste was less damaged and is thought to be salvageable.

The office building was also less affected and may too be salvageable in some form. A final decision on this is yet to be determined and further structural surveys and investigations are being conducted.

Demolition of the MRF building commenced in November and is nearly complete and has now been fully detached from the other two structures. Further investigation work is to be undertaken on the foundations and utilities that can now be accessed following demolition. See attached photographs (Appendix 2).

Work has been done to consider the replacement of the MRF equipment and this has been progressed to develop a suitable specification for the new plant.

A business case was submitted to Finance & Resources Committee in December which gave approval for SUEZ to proceed, with its insurers, on the rebuild.

3.0 Next Steps

3.1 Planning Application

SUEZ are preparing to submit a planning application which is required to enable the rebuild work. This application will cover the rebuild of the MRF building and potentially the works required on the office building. It is anticipated that this will be lodged mid-March. Attached is a short statement from SUEZ that provides further information on this (Appendix 3).

3.2 Building Specification

A specification for rebuilding the MRF will be developed once the investigatory works and the demolition are completed.

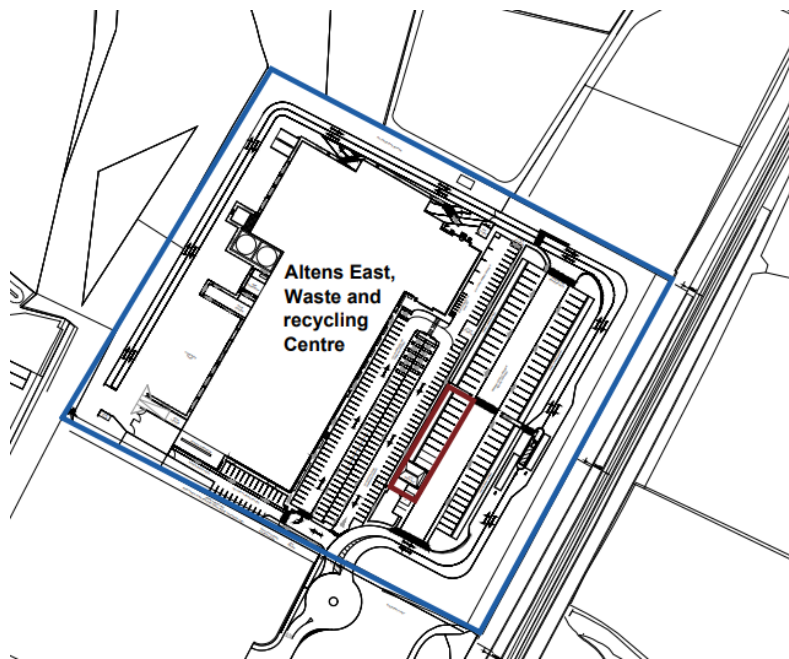
Further sampling and works are being undertaken on the RDF building to determine the level of repairs required.

3.3. Office

Further investigatory works are to be carried out on the office building to establish its future needs and a final decision on this is expected in the near future.

Pam Walker
Waste & Recycling Manager

APPENDIX 1 – Altens Temporary Facilities



Portacabin area marked in red. Vehicles will park at the north end of the lorry park area.



Portacabins (office building and RDF building in background).



Supervisor Office

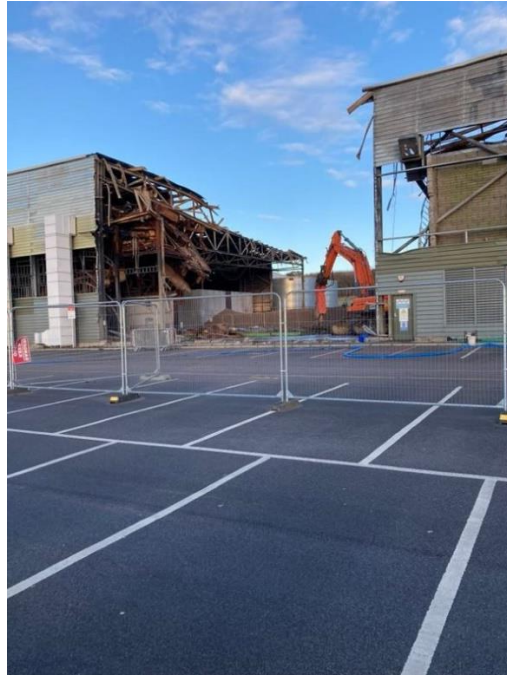


Canteen/muster area

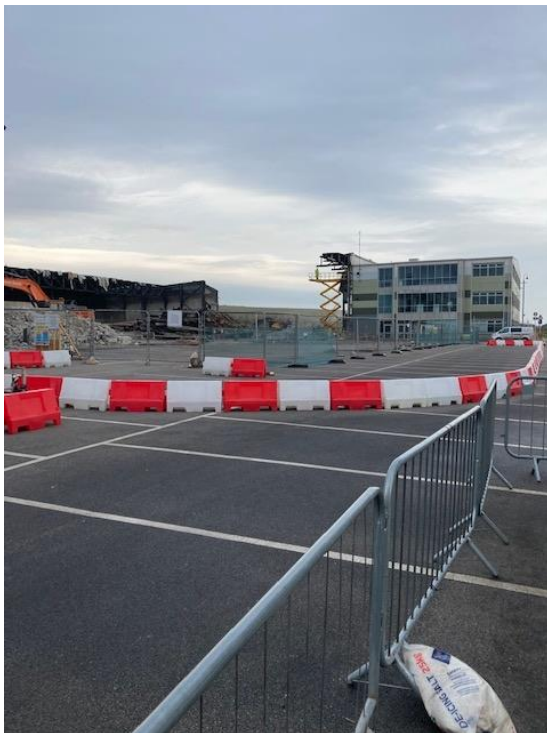
Appendix 2



Post fire and pre-demolition.



January 2023



February 2023

Appendix 3 – Planning Application Proposal

See attached file.