

SG_H&S_Report_Visuals_V4

[View in Power BI](#) ↗

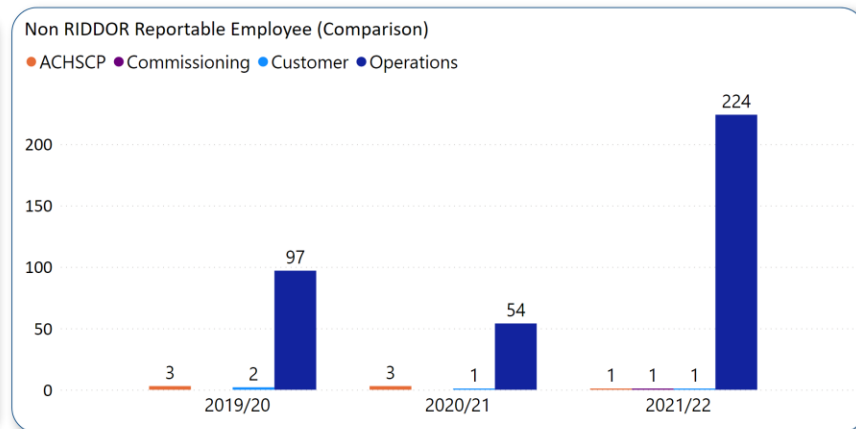
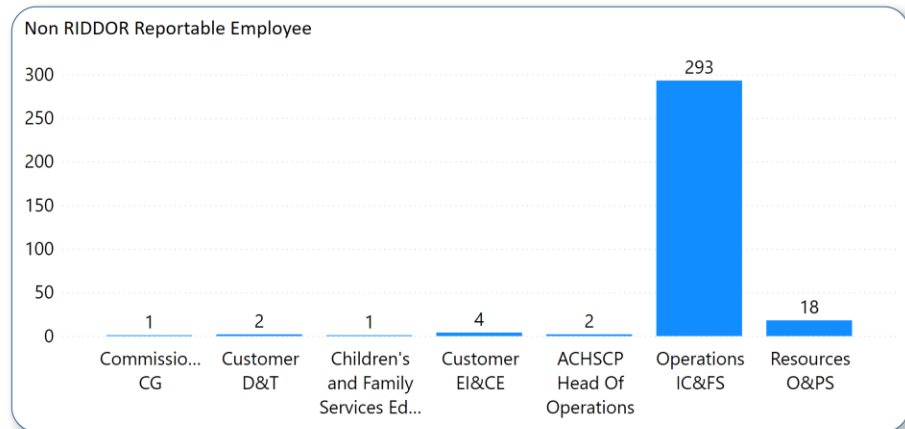
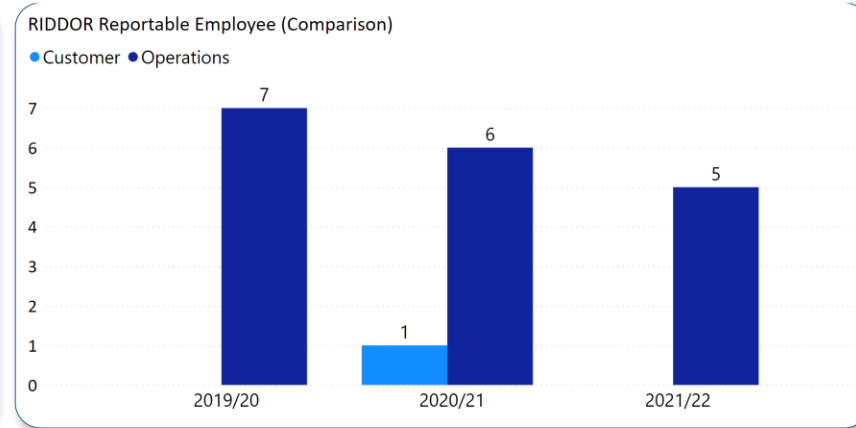
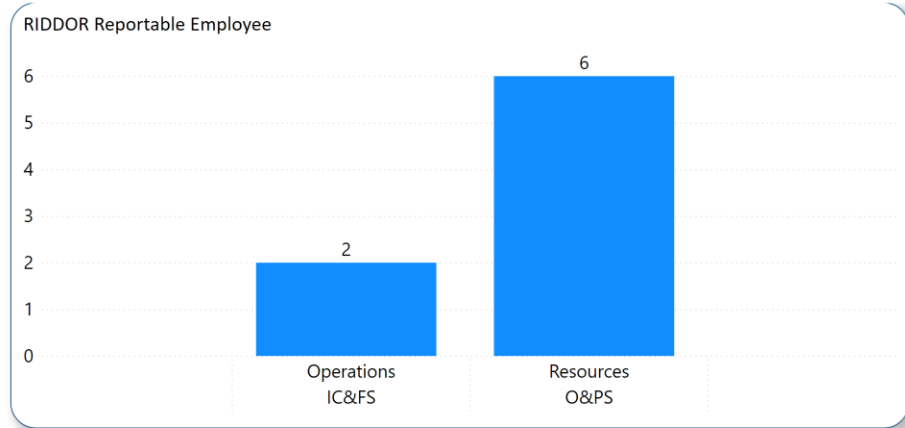
Last data refresh:
12/06/2023 13:07:29 UTC

Downloaded at:
12/06/2023 13:43:55 UTC

Staff Governance Health & Safety Report Quarter 4 2022/2023 (Jan 23 to Mar 23)

Reported H&S Incidents (Employee) Between Jan to Mar 2023

The following tables give breakdown of all employee incidents across all Functions and Clusters in Aberdeen City Council. The tables on the left initially show the number of incidents for each Cluster this reporting period with those on the right giving a quarter 4 comparison for each Function from 2019/20 to 2021/22.



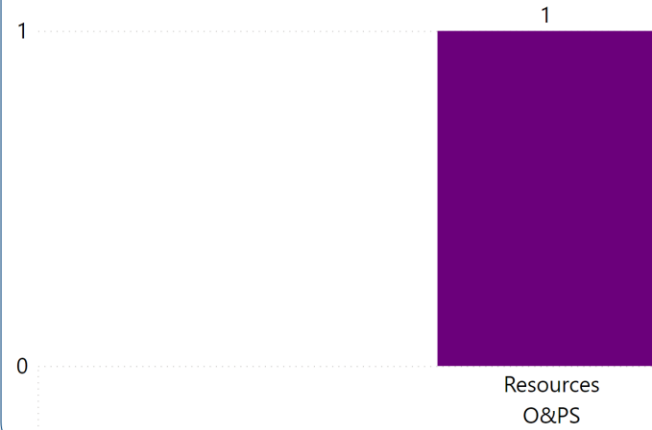
Employee Incident Information

RIDDOR reportable incidents are 8 for this quarter, a reduction from 11 last quarter but an increase from 6 for corresponding quarter last year. Incident reports show an increase from 2021/22 with the largest number still within Education. The increase could be attributable to a drive by Education and Trade Unions for all incidents to be reported but also could be representative of national increases across Scotland post-pandemic

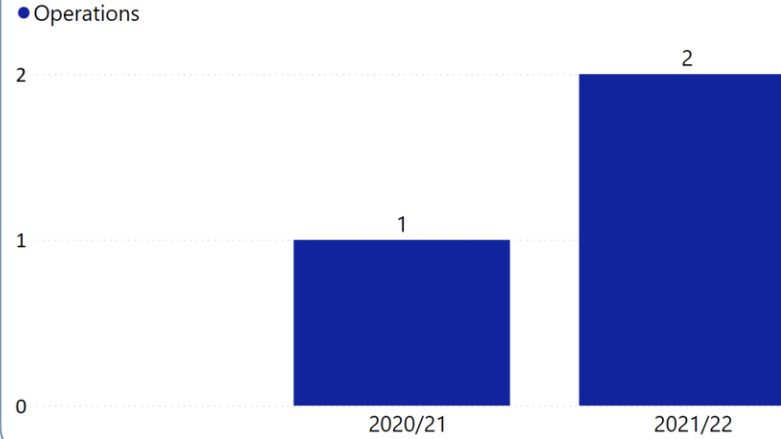
Reported H&S Incidents (Third Party) Between Jan to Mar 2023

The tables below give information on those non-employee incidents which happened across all Functions and Clusters. Again the tables on the left show the current period for each Cluster, with those on the right giving a quarter 4 comparison for each function from 2019/20 to 2021/22.

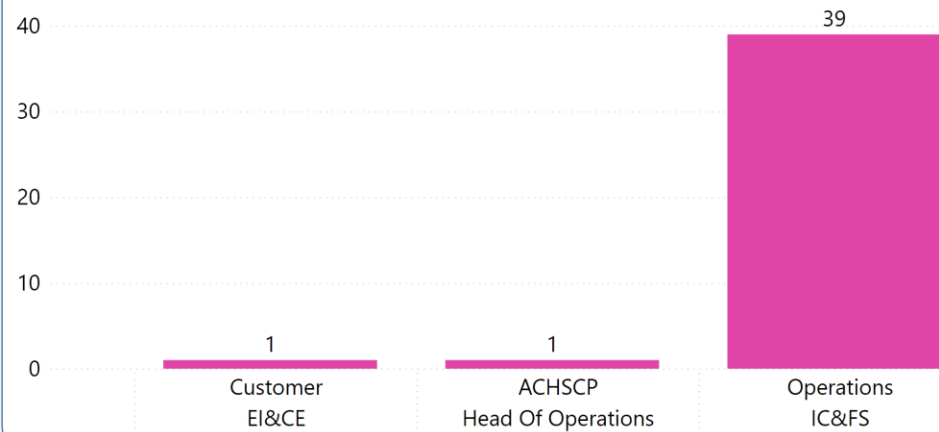
RIDDOR Reportable Non Employee



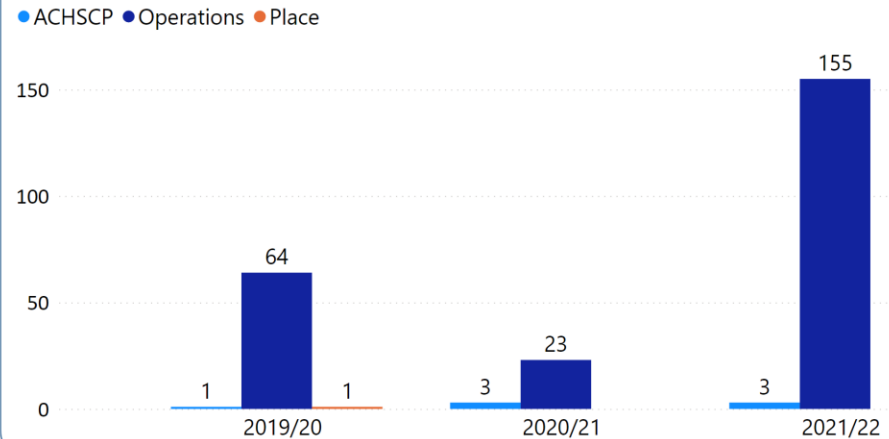
RIDDOR Reportable Non Employee (Comparison)



Non RIDDOR Reportable Non Employee

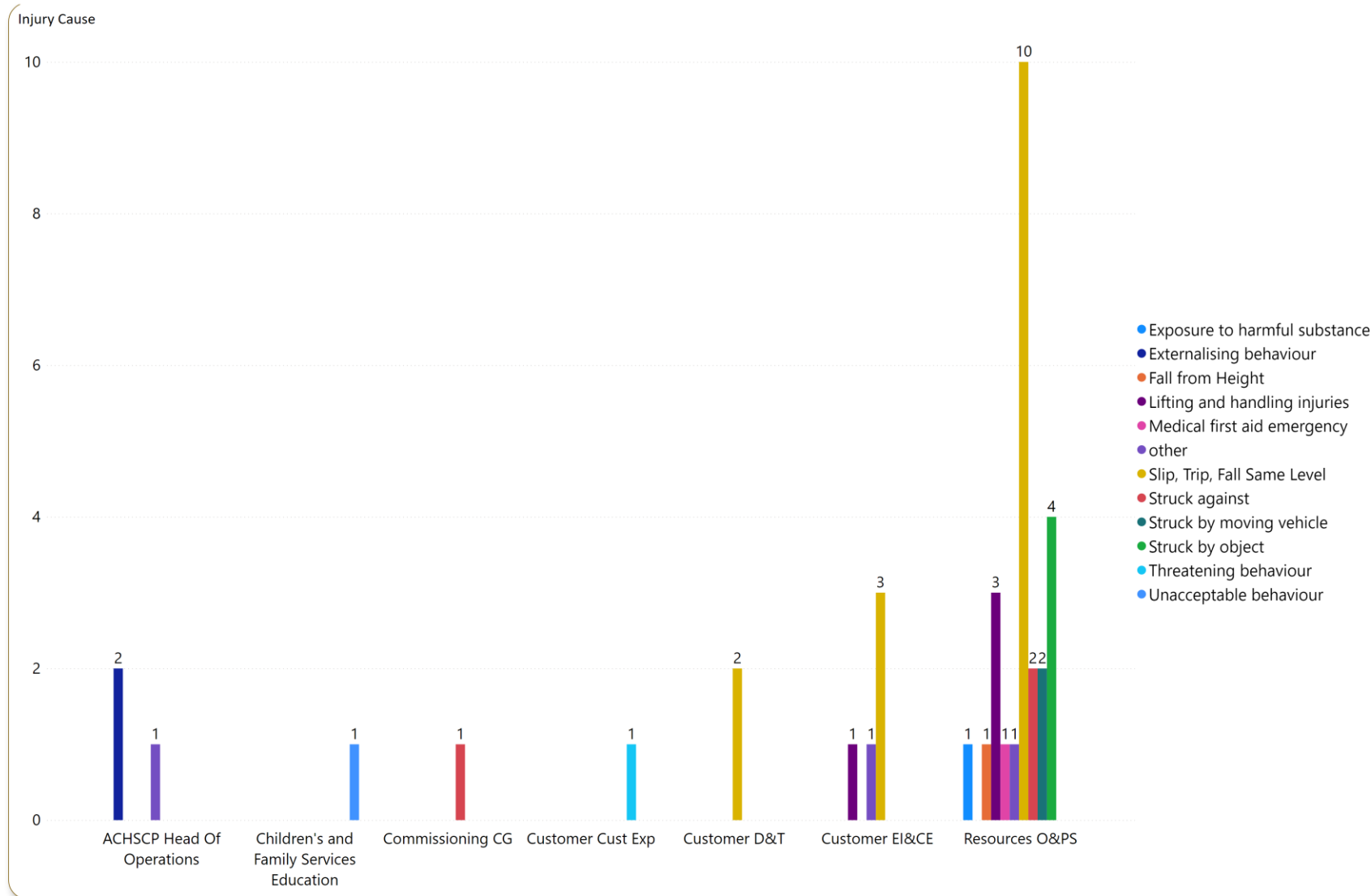


Non RIDDOR Reportable Non Employee (Comparison)



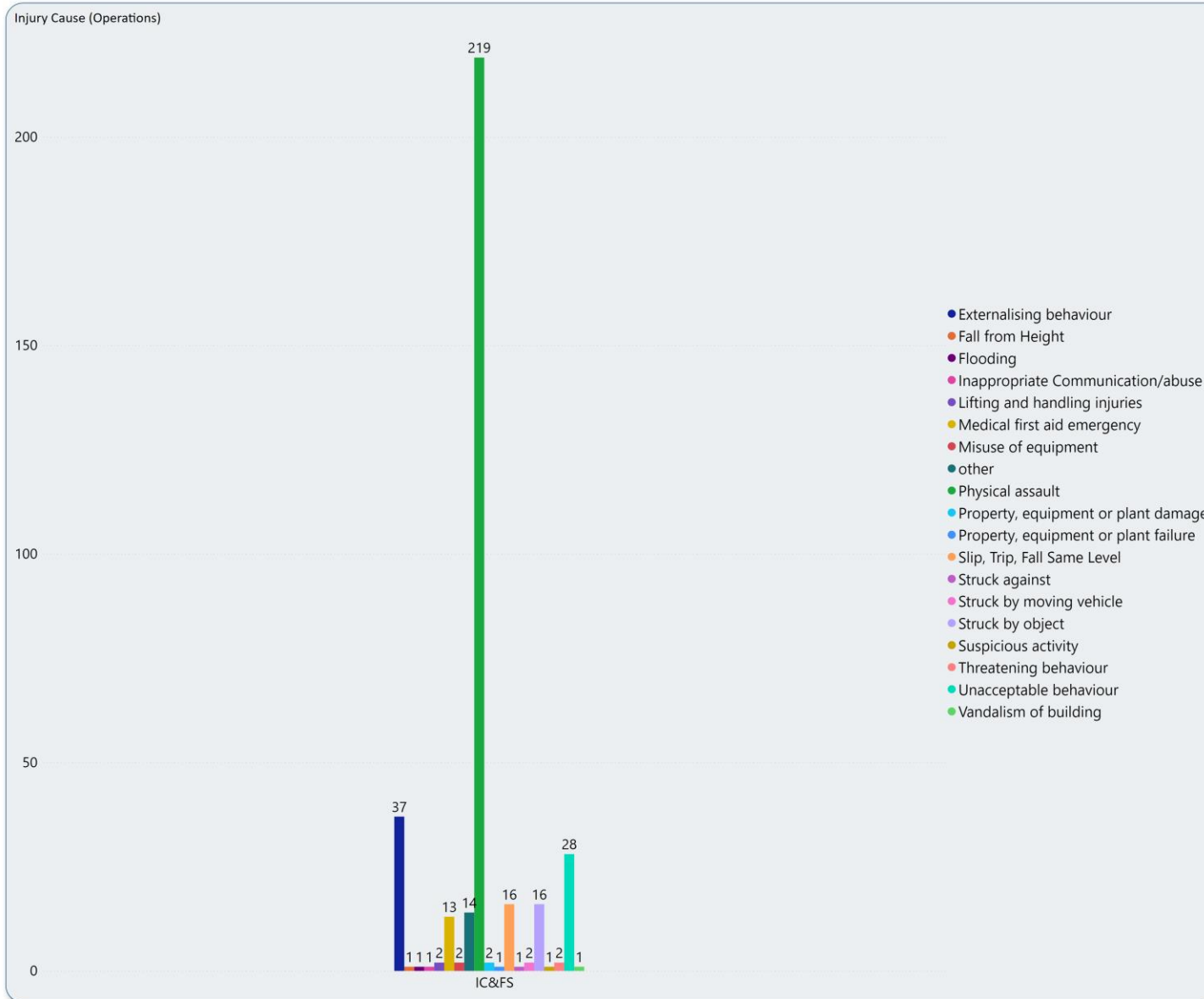
H&S Incident Causation Reported between Jan to Mar 2023

The table shows incident causation for each Cluster colour-coded against the key for this reporting period apart from Operations, which is covered in the next page.



Operations Reported H&S Incidents
Between Jan to Mar 2023

The following table gives a breakdown of **Operations** Incidents down to cluster level.

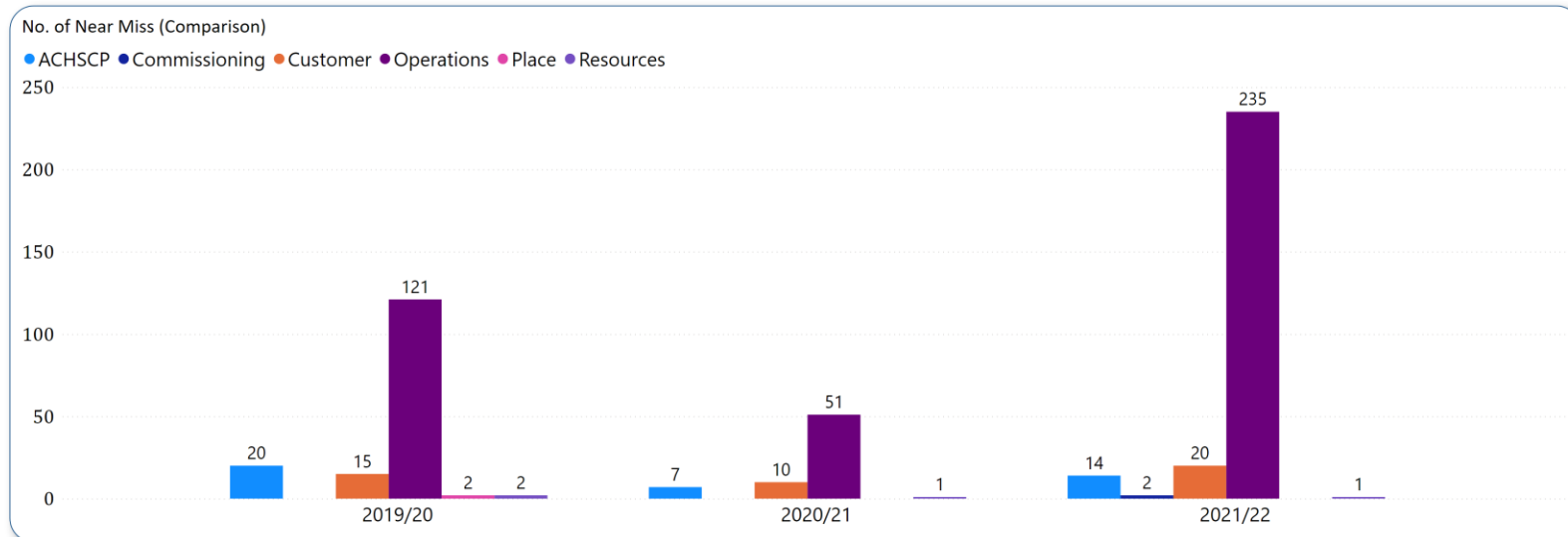
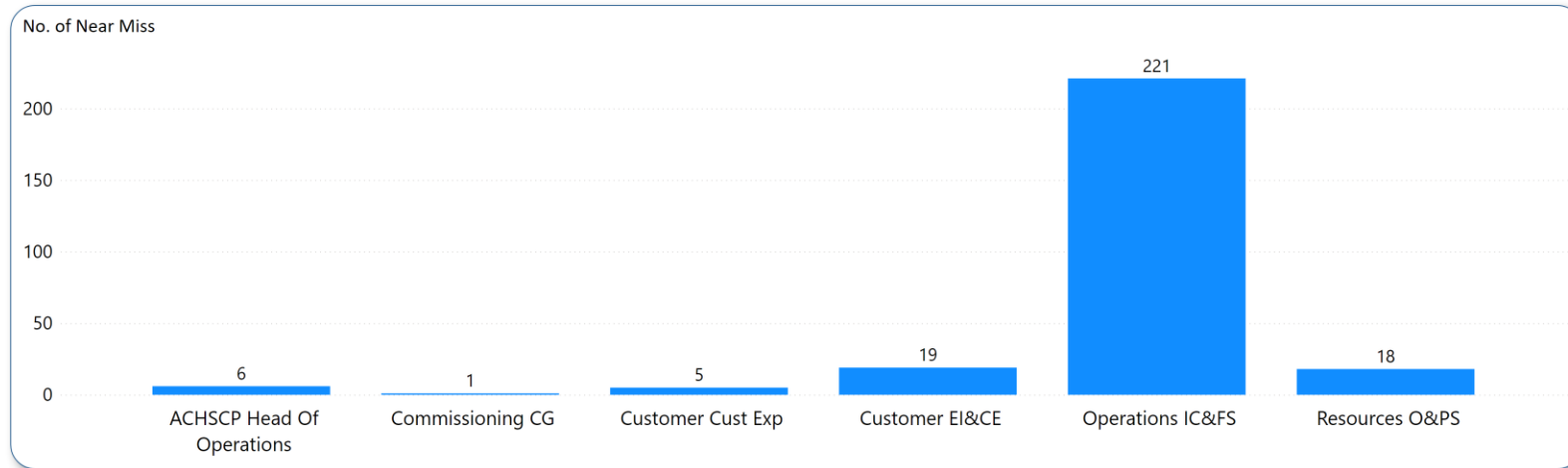


Cause	No. of Incidents
Physical assault	219
Externalising behaviour	37
Unacceptable behaviour	28
Slip, Trip, Fall Same Level	16
Struck by object	16
other	14
Medical first aid emergency	13
Lifting and handling injuries	2
Misuse of equipment	2
Property, equipment or plant damage	2
Struck by moving vehicle	2
Threatening behaviour	2
Fall from Height	1
Flooding	1
Inappropriate Communication/abuse	1
Property, equipment or plant failure	1
Struck against	1
Suspicious activity	1
Vandalism of building	1

Reported H&S Near Miss Between Jan to Mar 2023

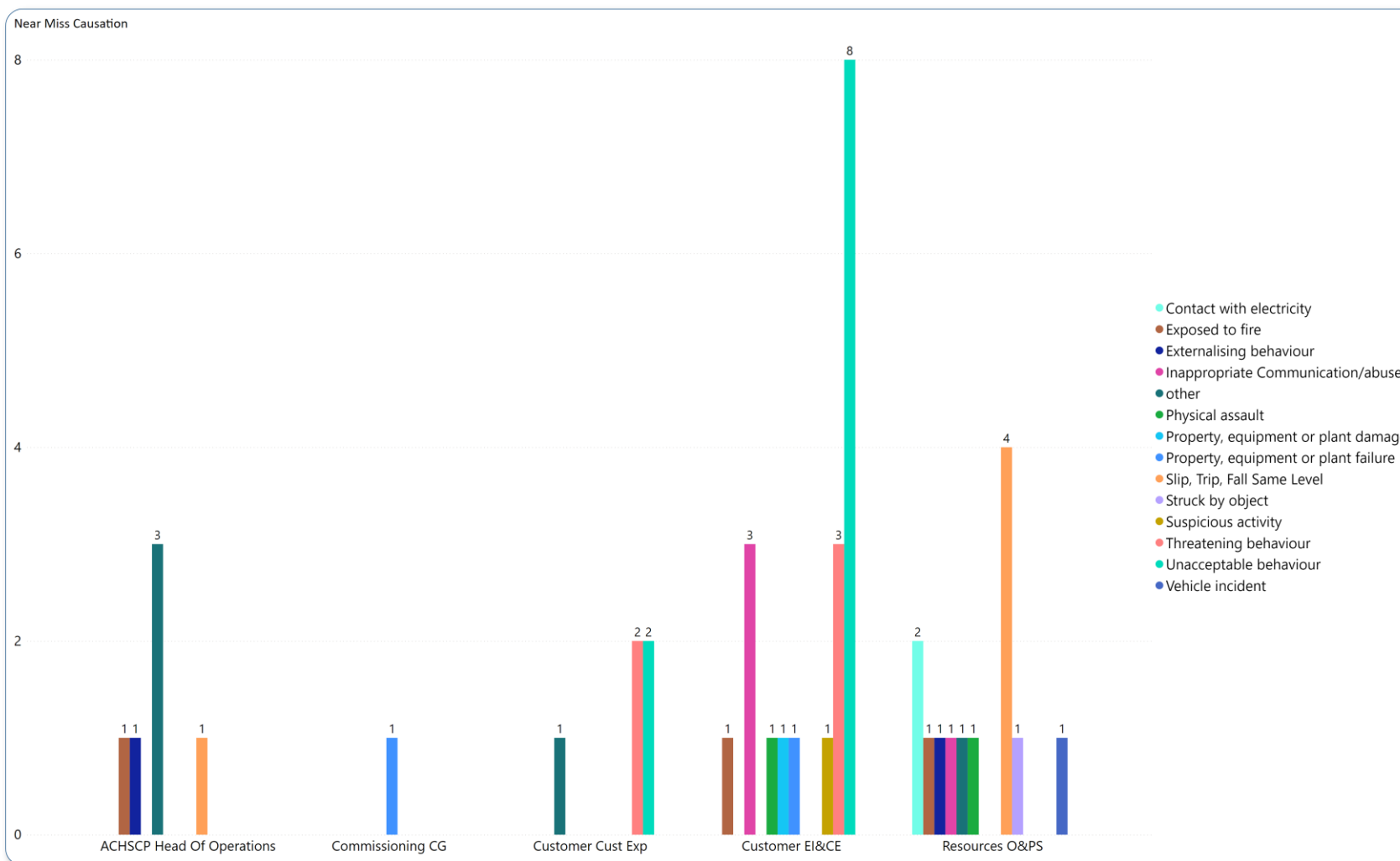
The tables below show information in relation to employee and non-employee Near Misses.

Top table: Total Near Misses for this reporting period for each Cluster. Bottom table: quarter 4 comparison of Near Misses for each Function from 2019/20 to 2021/22.



Reported H&S Near Miss (Causation)
Between Jan to Mar 2023

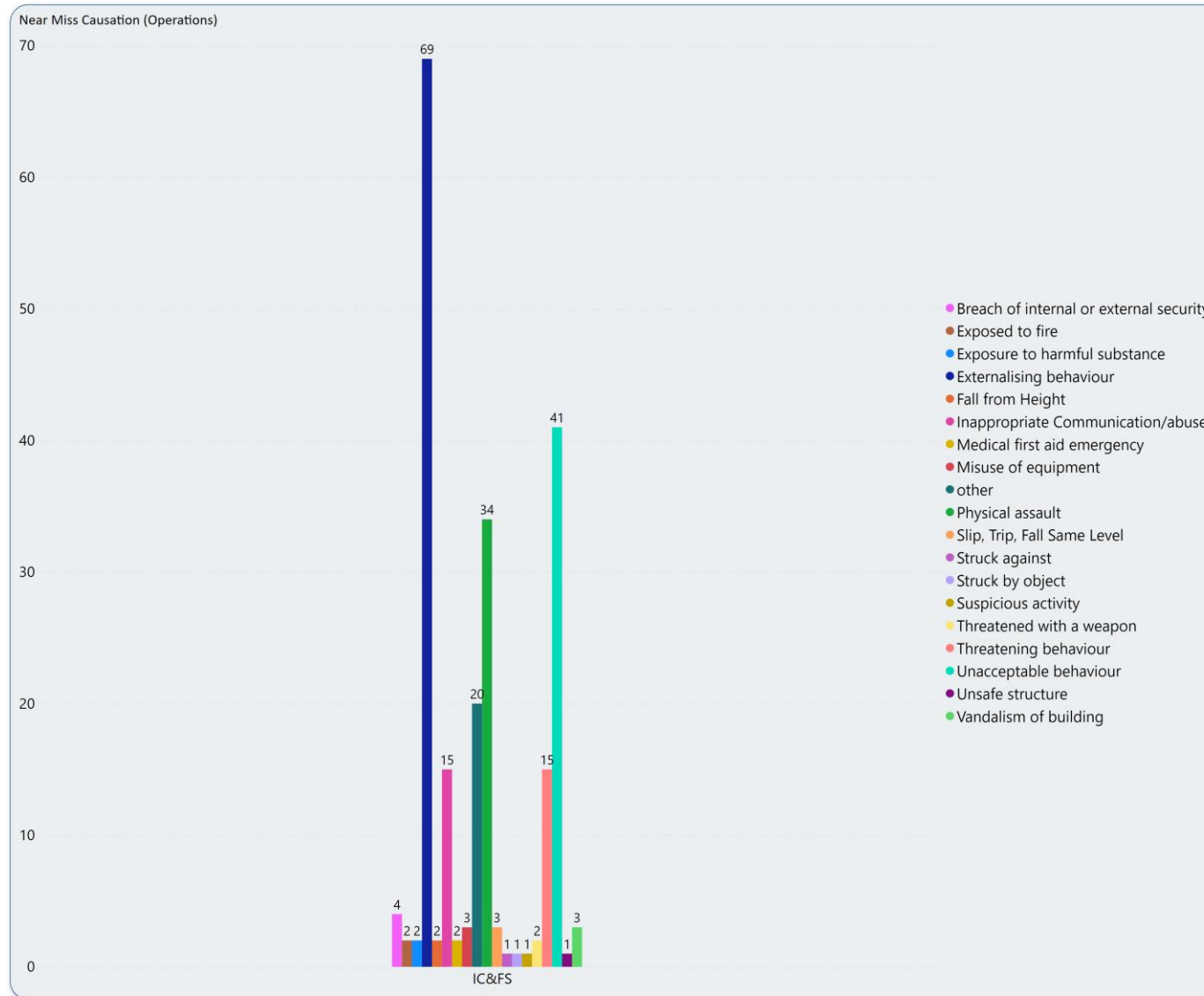
The table below shows information to a Function and Cluster level for employee and non-employee Near Misses apart from Operations, which is covered in the next page.



Near Miss

The number of near misses are similar to those reported last year and as with incidents the largest number sit within Education for pupil behavioural issues. The numbers are increased from the two previous years comparisons as they represent a full return to schools.

The following table gives a breakdown of **Operations** Near Miss down to cluster level.



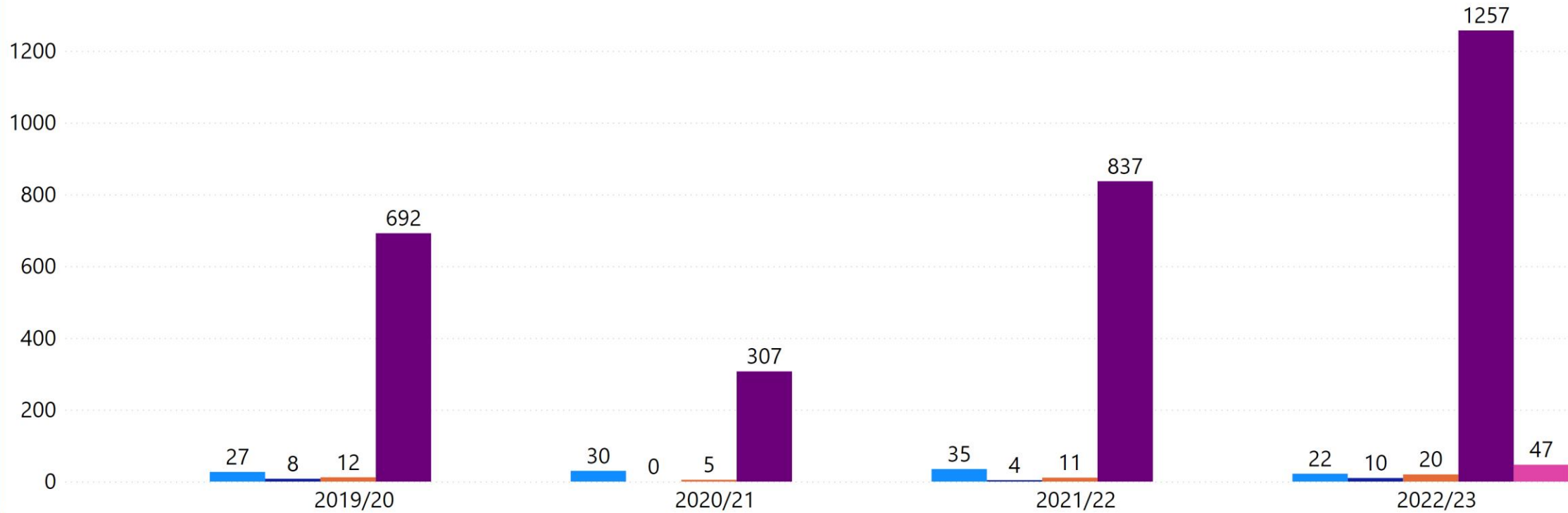
Cause	No. of Incidents
Externalising behaviour	69
Unacceptable behaviour	41
Physical assault	34
other	20
Inappropriate Communication/abuse	15
Threatening behaviour	15
Breach of internal or external security	4
Misuse of equipment	3
Slip, Trip, Fall Same Level	3
Vandalism of building	3
Exposed to fire	2
Exposure to harmful substance	2
Fall from Height	2
Medical first aid emergency	2
Threatened with a weapon	2
Struck against	1
Struck by object	1
Suspicious activity	1
Unsafe structure	1

Reported Incidents From 2019/20 to 2022/23

The table provides information on the **total number** of incidents for the last four reporting years (including current year to date) to Function level.

No. of Reported Incidents

● ACHSCP ● Commissioning ● Customer ● Operations ● Resources



Reported Near Miss From 2019/20 to 2022/23

The table provides information on the **total number** of near miss for the last four reporting years (including current year to date) to Function level.

No. of Reported Near Miss

● ACHSCP ● Commissioning ● Customer ● Operations ● Resources

