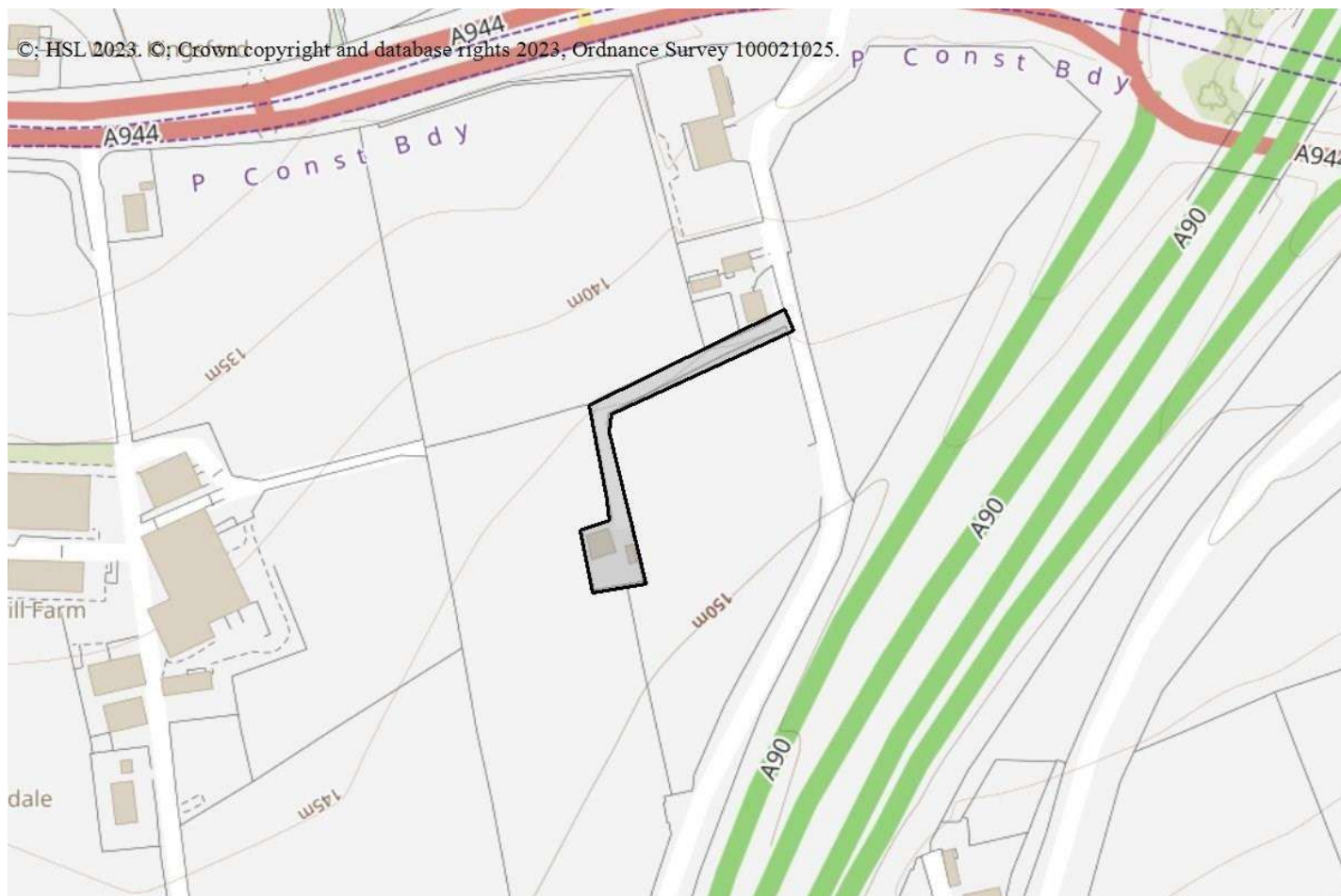


Housing : Do Not Advise Against

How many dwelling units are there (that lie partly or wholly within a consultation distance)? Less than 3



Pipelines

- 6776_ Shell UK Exploration & Production

As the proposed development is within the Consultation Distance of a major hazard pipeline you should consider contacting the pipeline operator before deciding the case. There are two particular reasons for this:

- The operator may have a legal interest (easement, wayleave etc.) in the vicinity of the pipeline. This may restrict certain developments within a certain proximity of the pipeline.
- The standards to which the pipeline is designed and operated may restrict occupied buildings or major traffic routes within a certain proximity of the pipeline. Consequently there may be a need for the operator to modify the pipeline, or its operation, if the development proceeds.

HSE's advice is based on the situation as currently exists, our advice in this case will not be altered by the outcome of any consultation you may have with the pipeline operator.

This advice report has been generated using information supplied by Esmond Sage at Aberdeen City Council on 11 July 2023.

Note that any changes in the information concerning this development would require it to be re-submitted.

