

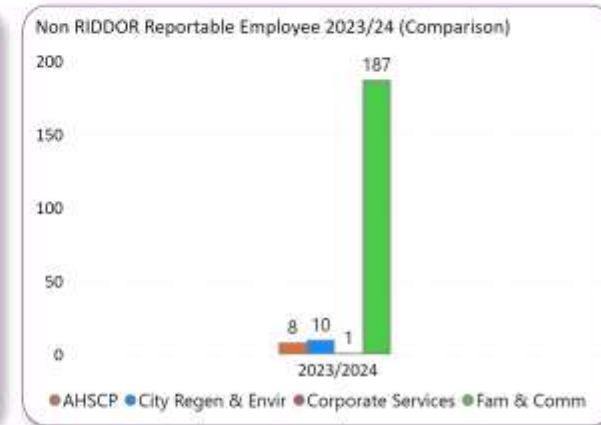
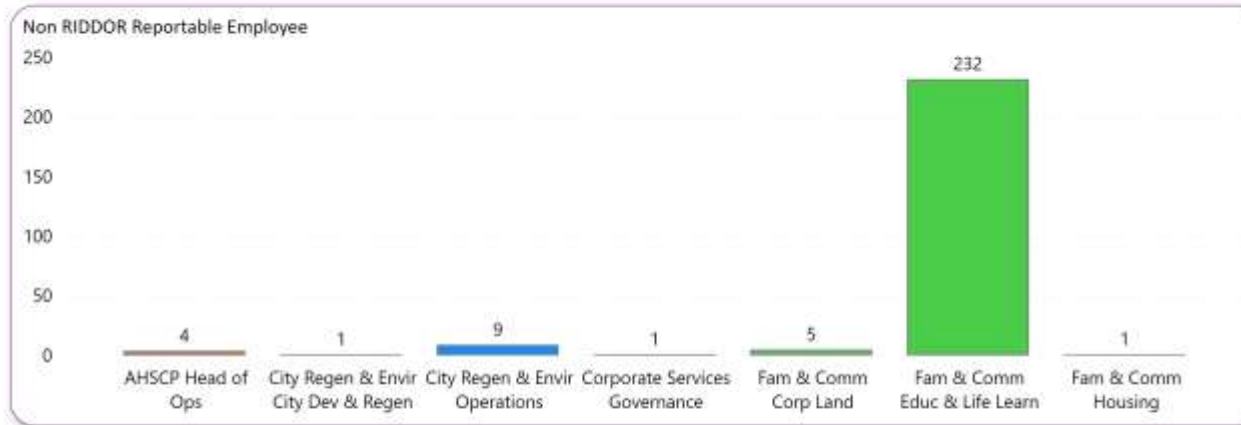
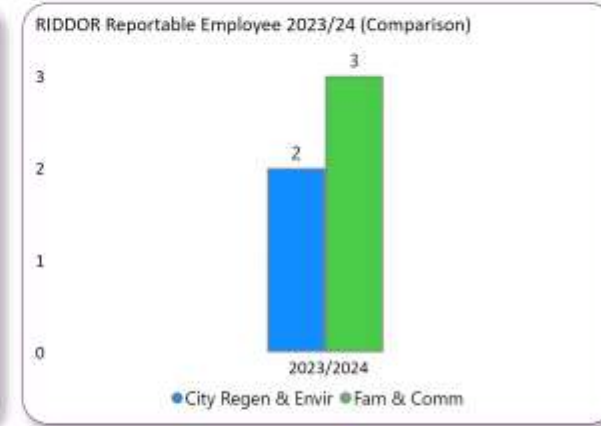
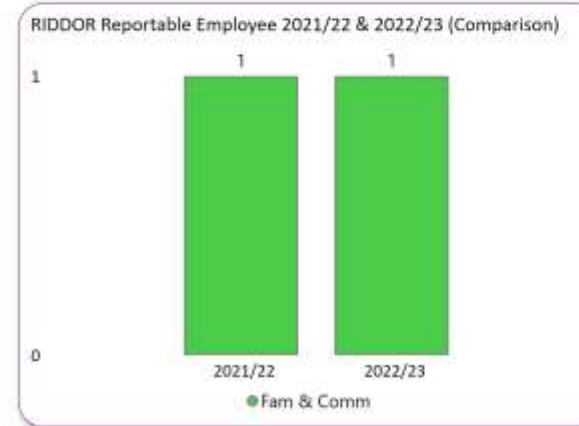
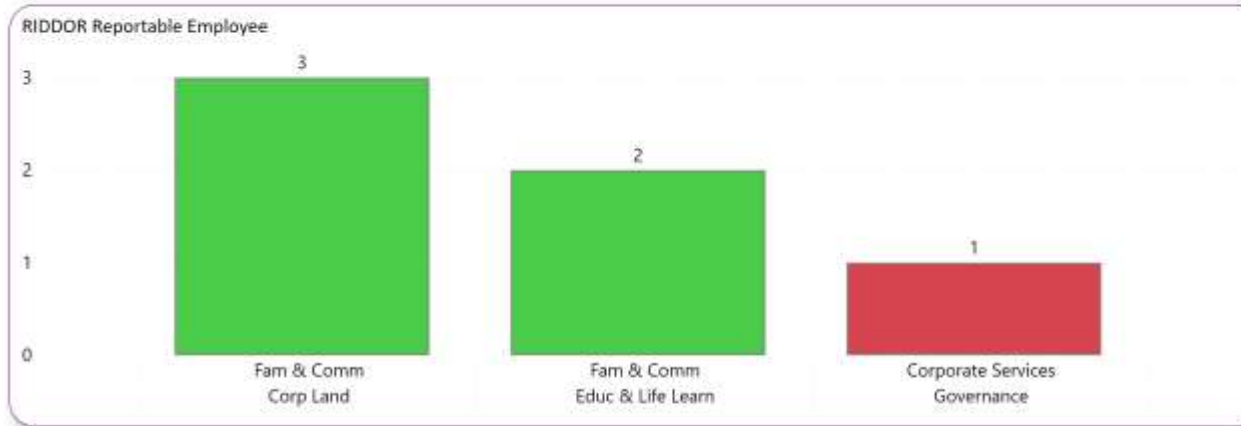
Staff Governance Health & Safety Report Quarter 2 2024/2025 (Jul 24 to Sep 24)

DISCLAIMER

The content of this Staff Governance H&S Report is confidential and protected by copyright. The relevant Data Stewards supplied the data used in this report. The report shows the position as at the dates identified within the report. Data and/or visuals (charts) contained within this Staff Governance H&S Report must not be copied, shared electronically or in hard copy, published or reproduced without the prior written consent of the Analytics & Insight Team (contact Claudine Mackie at claudinm@aberdeencity.gov.uk). If you find any errors or omissions please report this to the Analytics & Insight Team at the aforementioned email address.

Reported H&S Incidents (Employee) Between Jul to Sep 2024

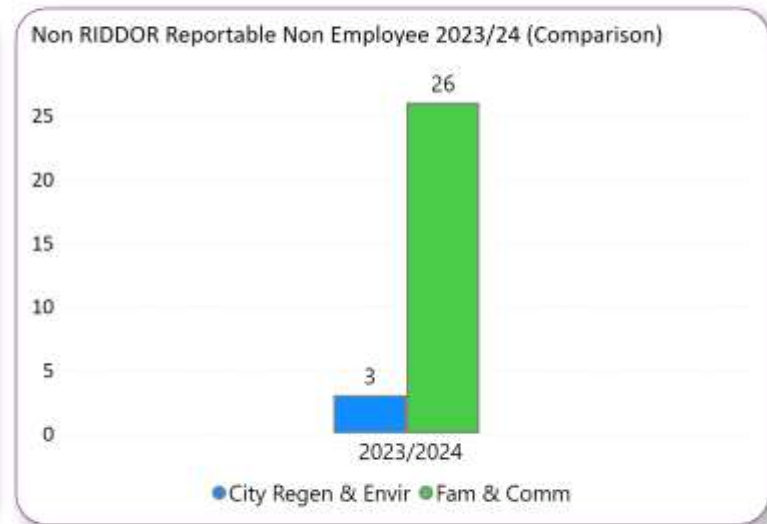
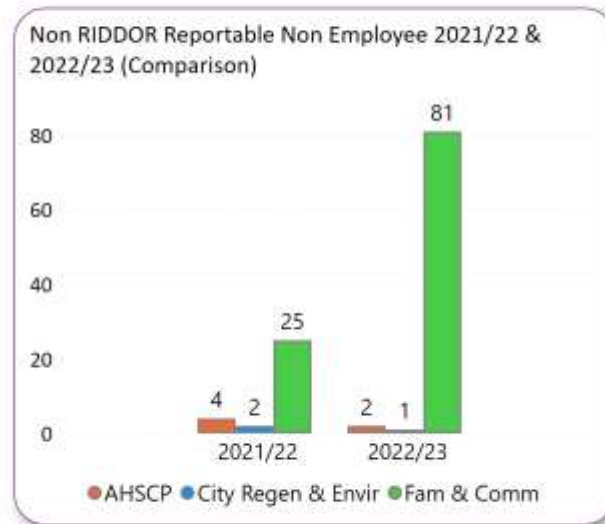
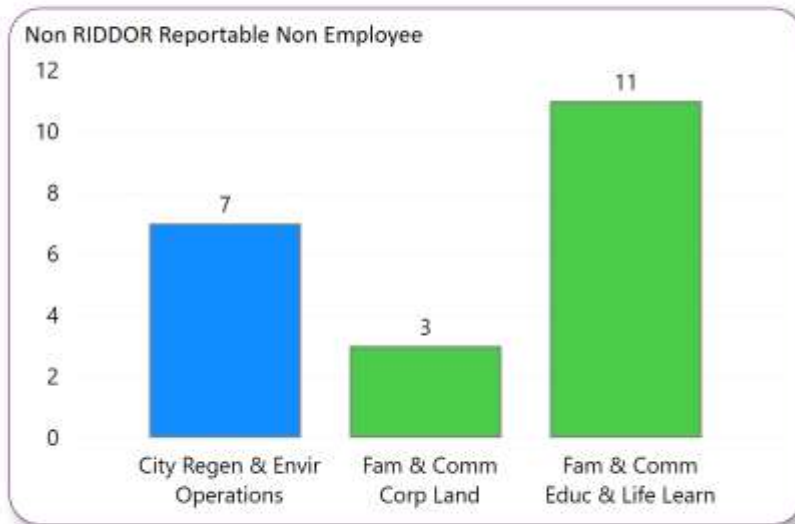
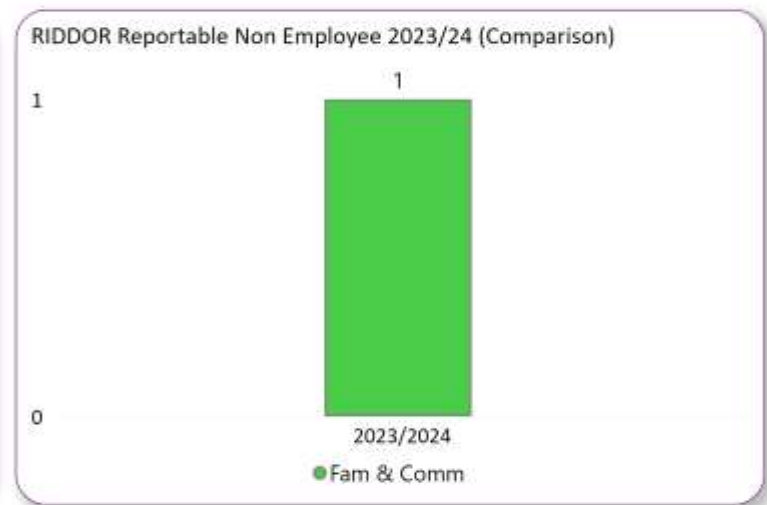
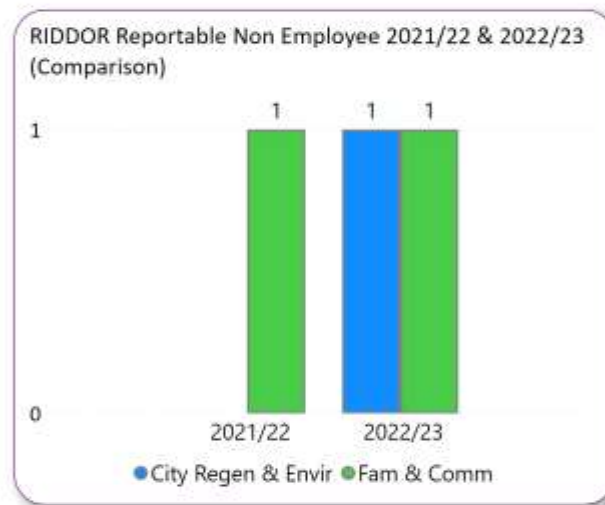
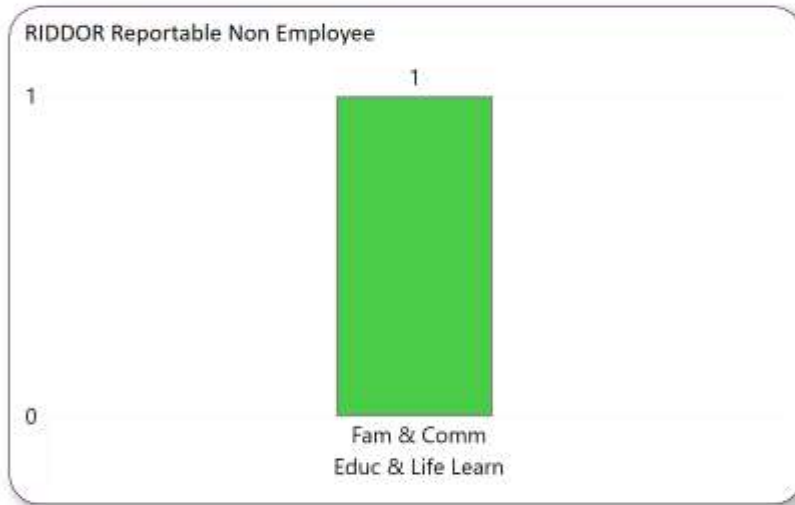
The following tables give breakdown of all employee incidents across all Functions and Clusters in Aberdeen City Council. The tables on the left initially show the number of incidents for each Cluster this reporting period with those tables on the right giving a quarter 2 comparison for each Function from 2021/22 to 2023/24 where applicable.



Employee Incident Information
Incident levels are up from the corresponding quarterly periods of the previous 3 years with the main causes being inappropriate behaviour. However on page 9 you can see the quarterly trend peaked in quarter 4 of last year and is now on a downward trend of total incidents. This peak at quarter 4 is also shown in the previous year and will need further reporting periods on the new system to confirm if it is an annual trend.

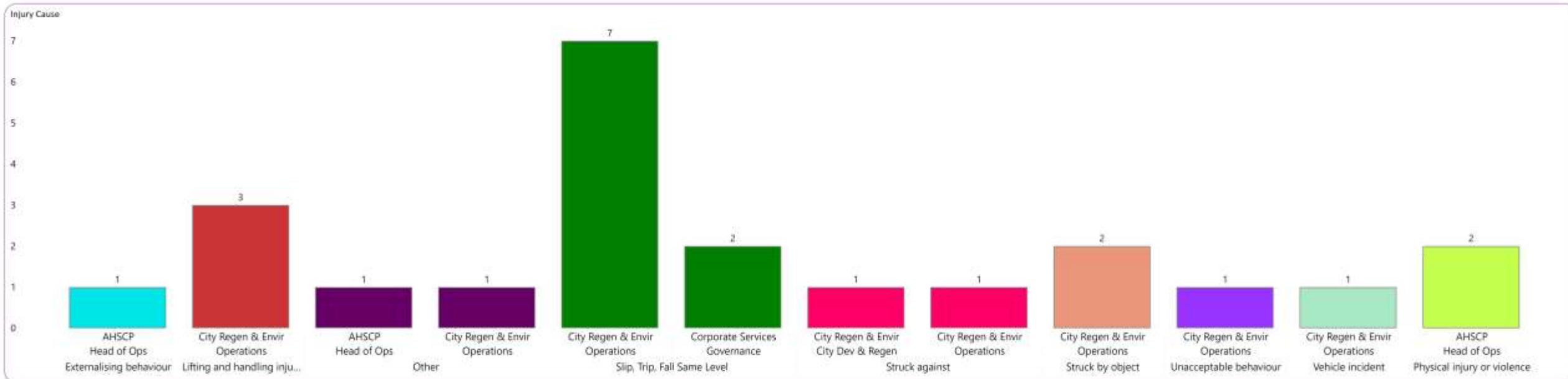
Reported H&S Incidents (Third Party) Between Jul to Sep 2024

The tables below give information on those non-employee incidents which happened across all Functions and Clusters. Again the tables on the left show the current period for each Cluster, with those tables on the right giving a quarter 2 comparison for each function from 2021/22 to 2023/24 where applicable.



H&S Incident Causation Reported between Jul to Sep 2024

The table shows incident causation for each Cluster for this reporting period apart from Families & Communities, which is covered in the next page.

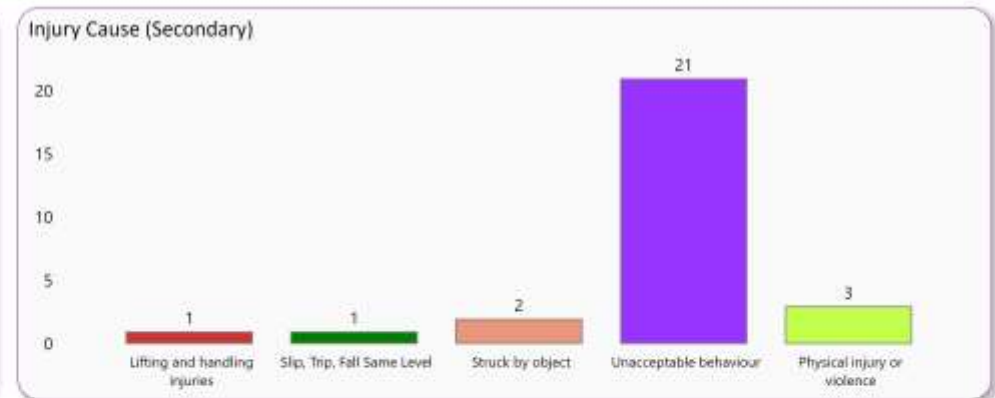
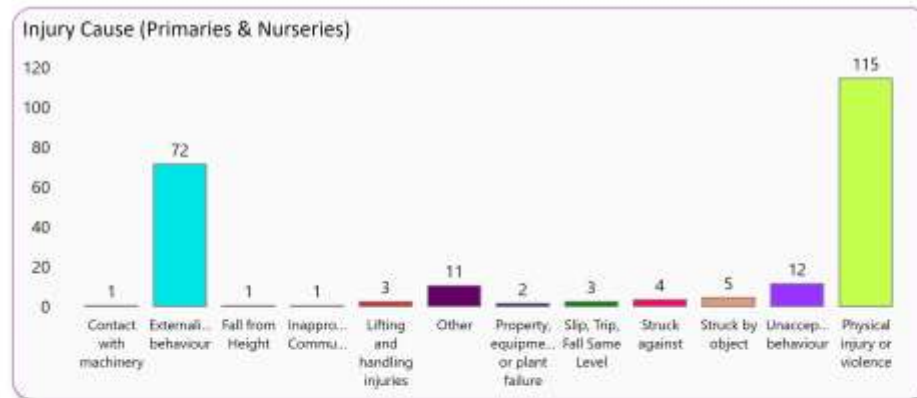
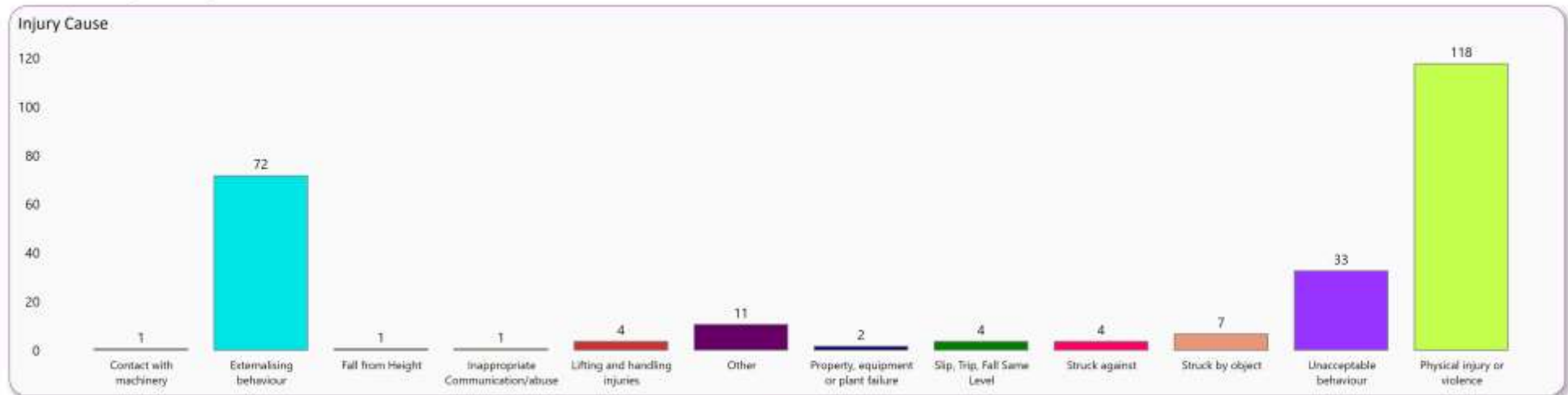


Injury Cause

Externalising behaviour	Lifting and handling injuries	Other	Physical injury or violence	Slip, Trip, Fall Same Level	Struck against	Struck by object	Unacceptable behaviour	Vehicle incident	Total
1	3	2	2	9	2	2	1	1	23

Families & Communities reported H&S Incidents Between Jul to Sep 2024

The following tables give a breakdown of Families & Communities Incidents.

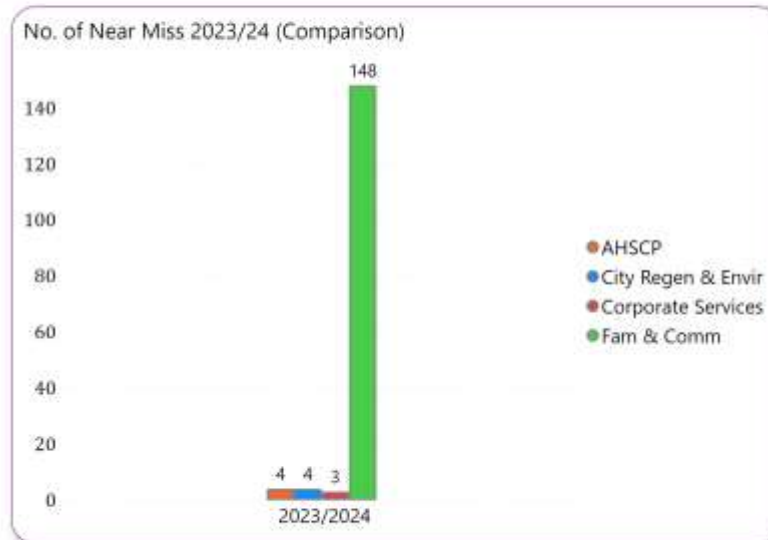
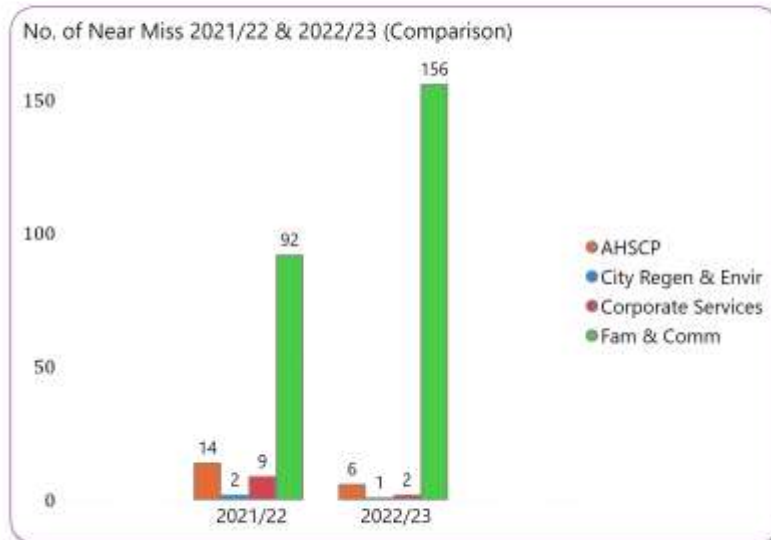
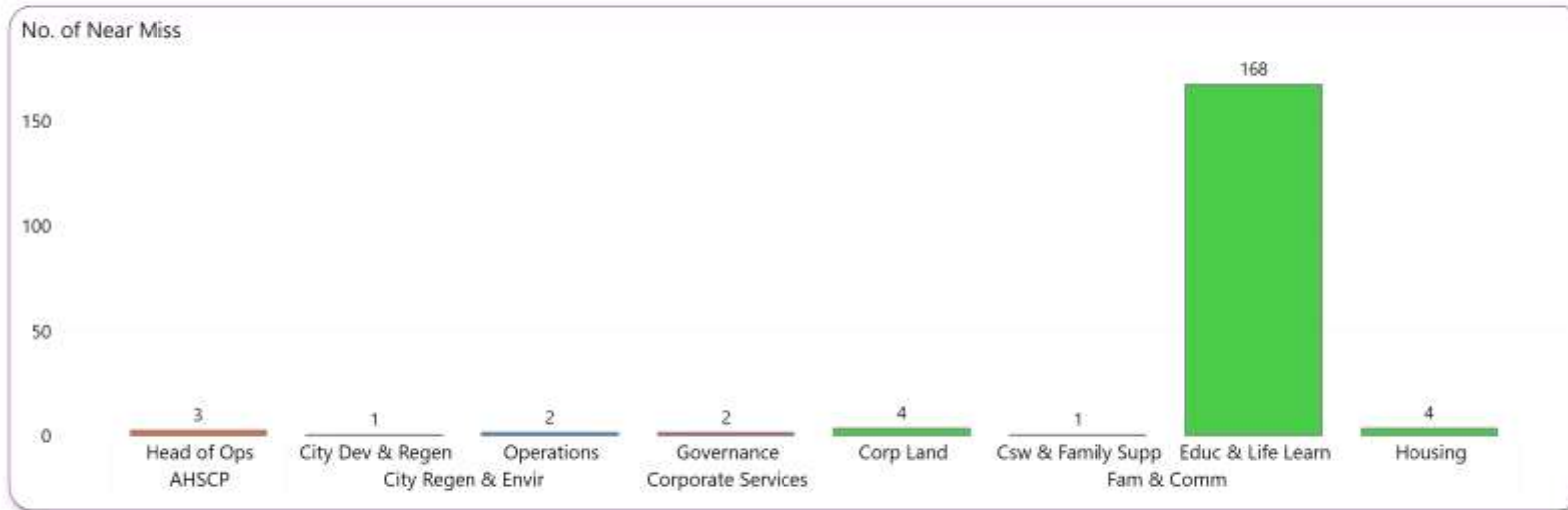


Injury Cause												
Contact with machinery	Externalising behaviour	Fall from Height	Inappropriate Communication/abuse	Lifting and handling injuries	Other	Physical injury or violence	Property, equipment or plant failure	Slip, Trip, Fall Same Level	Struck against	Struck by object	Unacceptable behaviour	Total
1	72	1	1	4	11	118	2	4	4	7	33	258

Reported H&S Near Miss Between Jul to Sep 2024

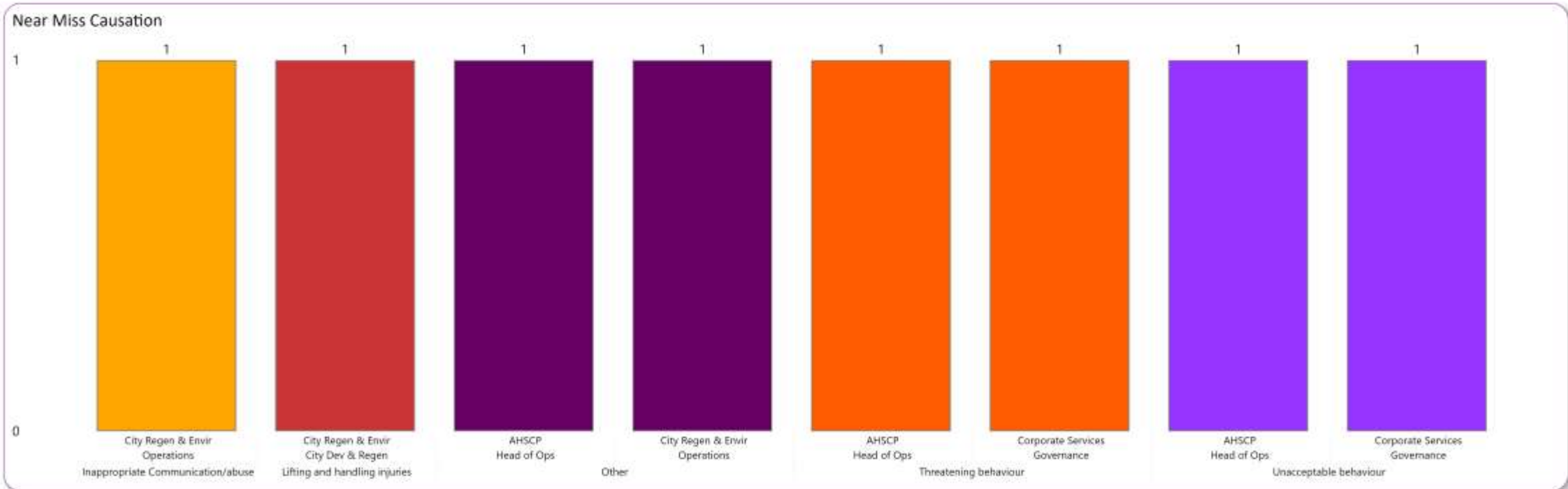
The tables below show information in relation to employee and non-employee Near Misses.

Top table: Total Near Misses for this reporting period for each Cluster. Bottom tables: quarter 2 comparison of Near Misses for each Function from 2021/22 to 2023/24.



**Reported H&S Near Miss (Causation)
Between Jul to Sep 2024**

The table below shows information to a Function and Cluster level for employee and non-employee Near Misses apart from Families & Communities, which is covered in the next page.



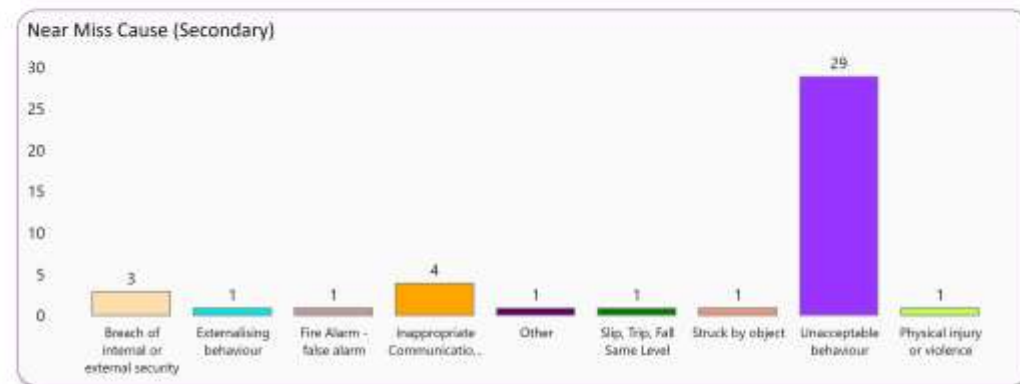
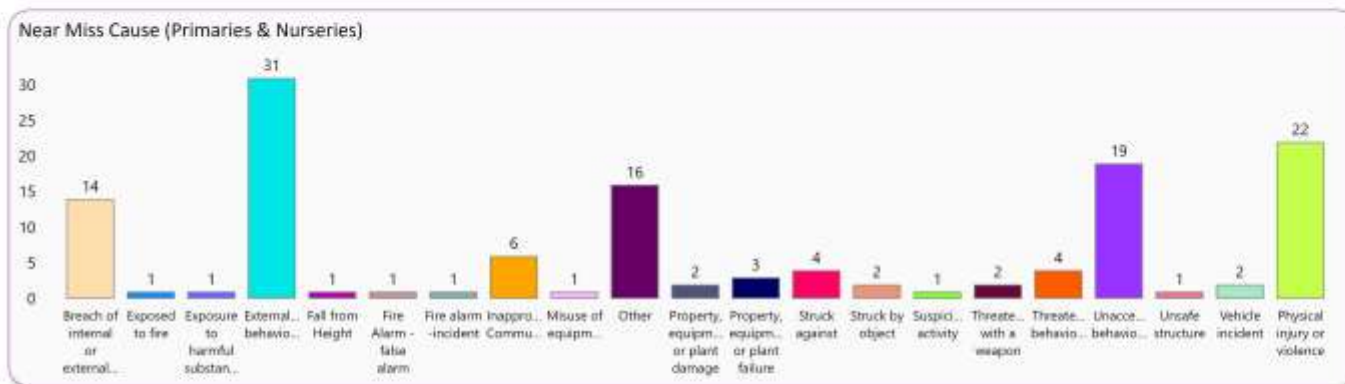
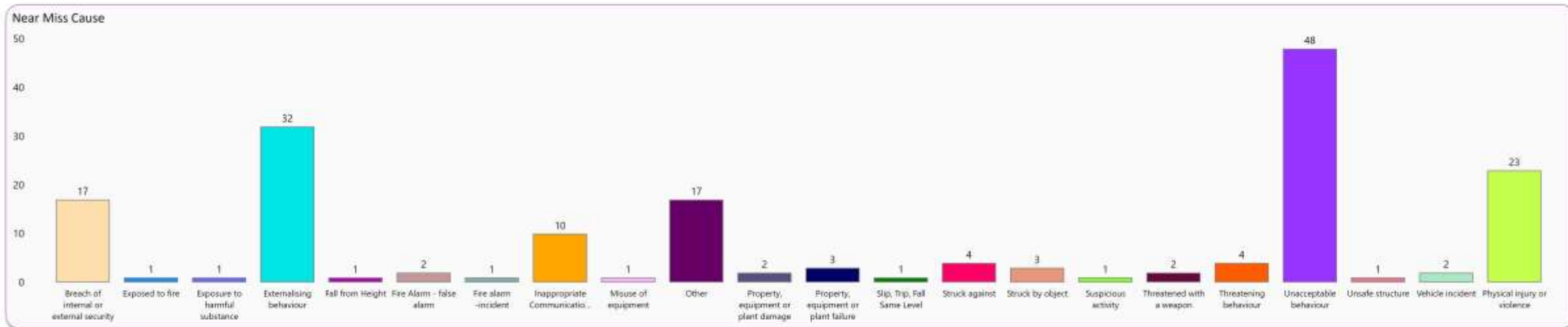
Near Miss Cause					
Inappropriate Communication/abuse	Lifting and handling injuries	Other	Threatening behaviour	Unacceptable behaviour	Total
1	1	2	2	2	8

Near Miss

Near misses have reduced slightly for the corresponding quarters from last year (page 6). Various categories of inappropriate behaviours continue to be the main causation of near misses. Page 10 of the report, which is new, contains a line chart showing the quarterly trend of near misses reported on Core HR from when the system started being used. It shows a reducing trend of near misses reporting over the last 2 quarters.

Families & Communities reported H&S Near Miss Between Jul to Sep 2024

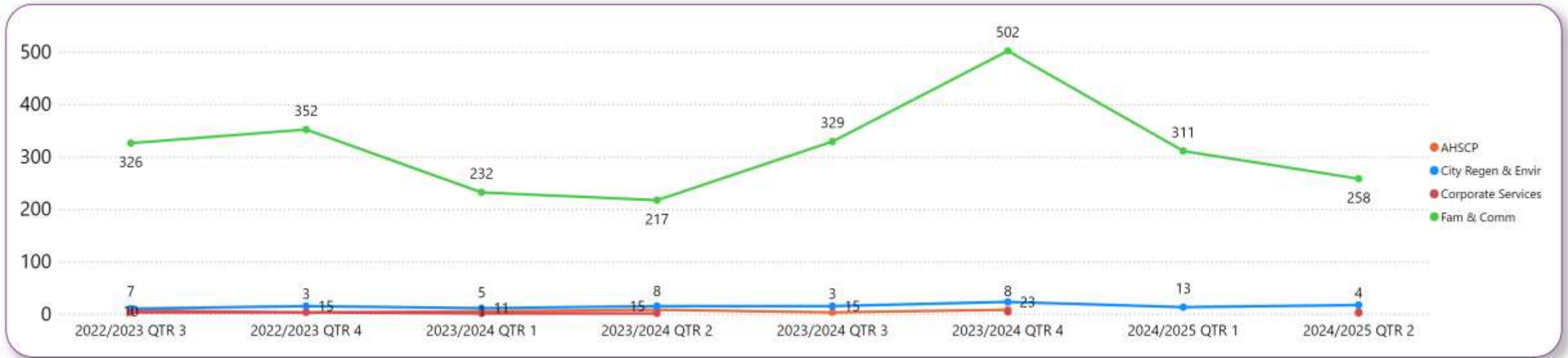
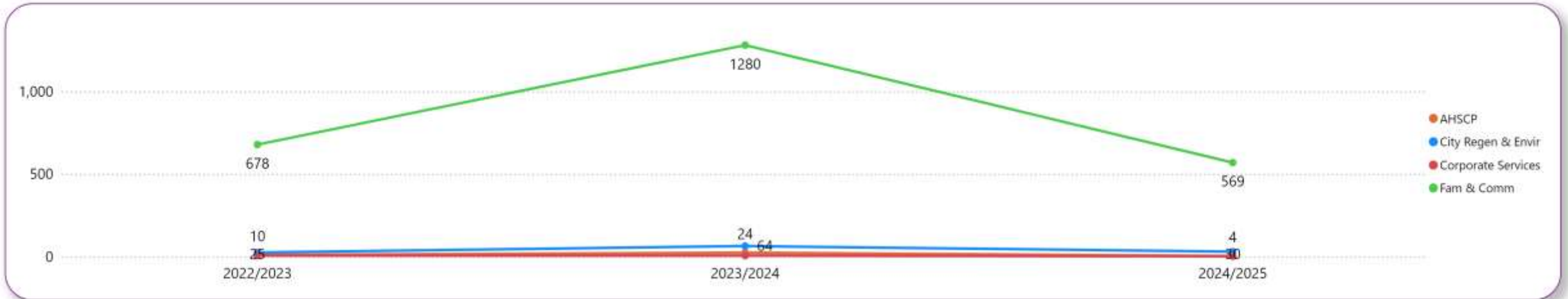
The following tables give a breakdown of Families & Communities Near Miss.



Near Miss Cause																						
Breach of internal or external security	Exposed to fire	Exposure to harmful substance	Externalising behaviour	Fall from Height	Fire Alarm - false alarm	Fire alarm -incident	Inappropriate Communication /abuse	Misuse of equipment	Other	Physical injury or violence	Property, equipment or plant damage	Property, equipment or plant failure	Slip, Trip, Fall Same Level	Struck against	Struck by object	Suspicious activity	Threatened with a weapon	Threatening behaviour	Unacceptable behaviour	Unsafe structure	Vehicle incident	Total
17	1	1	32	1	2	1	10	1	17	23	2	3	1	4	3	1	2	4	48	1	2	177

Reported Incidents From Q3 2022/23 to Q2 2024/25

The tables provides information on the **total number** of incidents from 2022/23 to 2024/25 to Function level.



Reported Near Miss From Q3 2022/23 to Q2 2024/25

The tables provides information on the **total number** of near misses from 2022/23 to 2024/25 to Function level.

