

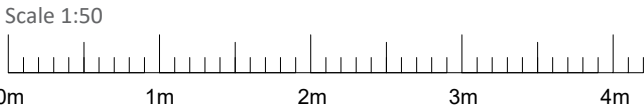
NOTES

This drawing is the property of All Design (Scotland) Limited. Copyright is reserved by All Design (Scotland) Limited and the drawing is issued on the condition that it is not copied either wholly or in part without the consent in writing of All Design (Scotland) Limited.

Figured dimensions take preference. Do not scale from this drawing. All dimensions to be checked on site by Main Contractor before commencement of any work, shop drawings or manufacture of components. Dimensions are in millimetres unless otherwise specified. Any discrepancies to be referred to this office for decision. This drawing is to be read in conjunction with the specification (when applicable). All drainage lines are assumed until verified on site by Main Contractor.

For kitchen and utility units, all dimensions (plan and vertical) must be taken on site prior to manufacture by kitchen and utility unit manufacturer.

These drawings are to be read in conjunction with:
AD 1807/ 01, 02 and 03

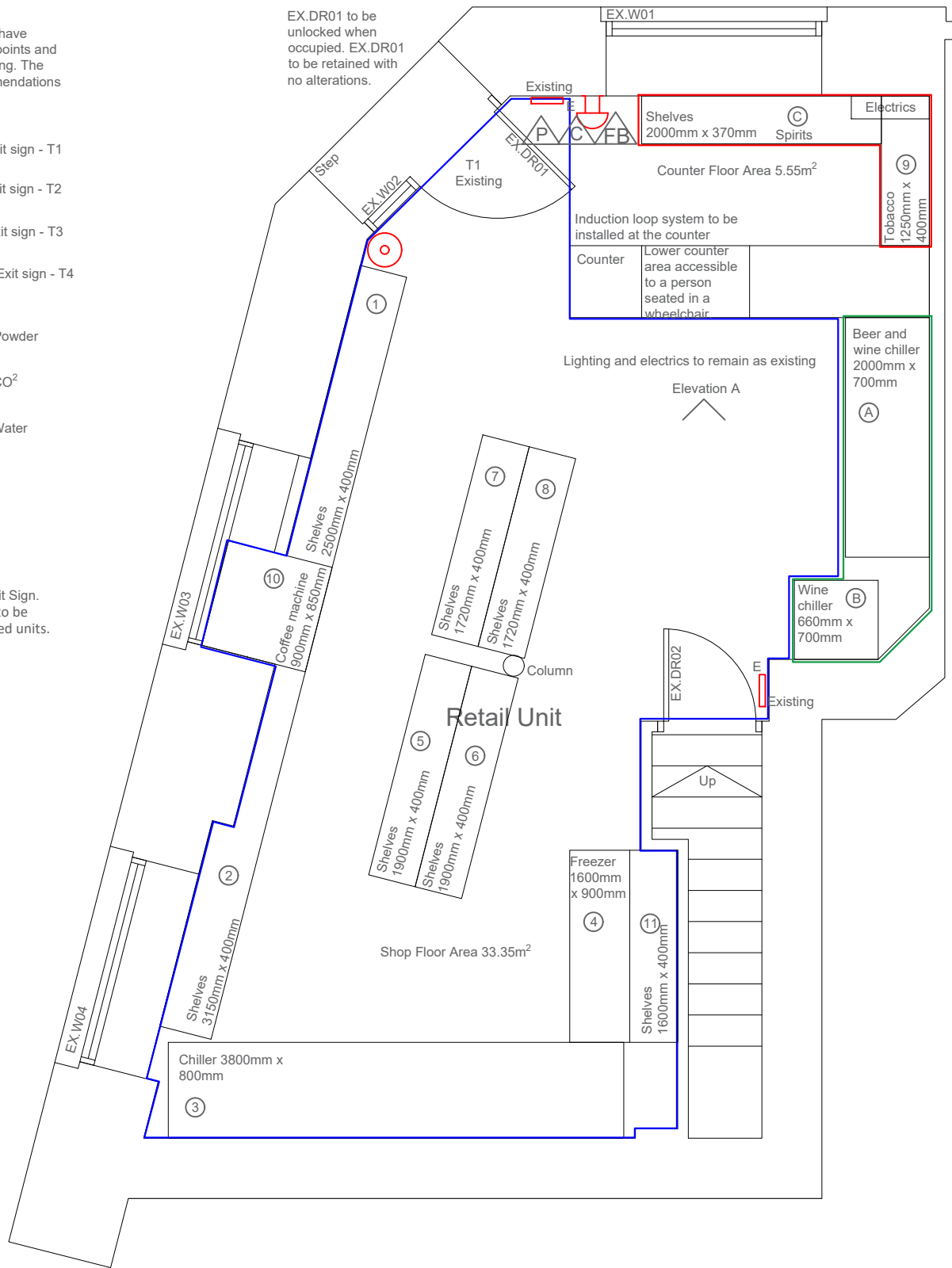


No food preparation within premises

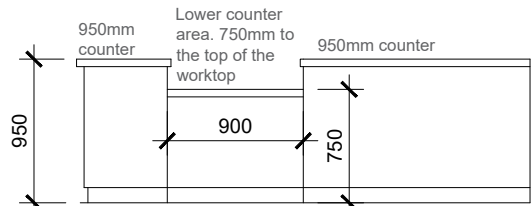
Ground Floor and Lower Ground Floor to have Category M system includes manual call points and sounders at specific locations in the building. The system must fully comply with the recommendations of BS EN 54:Part 11:2001.

- Illuminated Emergency Exit sign - T1
- Illuminated Emergency Exit sign - T2
- Illuminated Emergency Exit sign - T3
- Glow in Dark Emergency Exit sign - T4

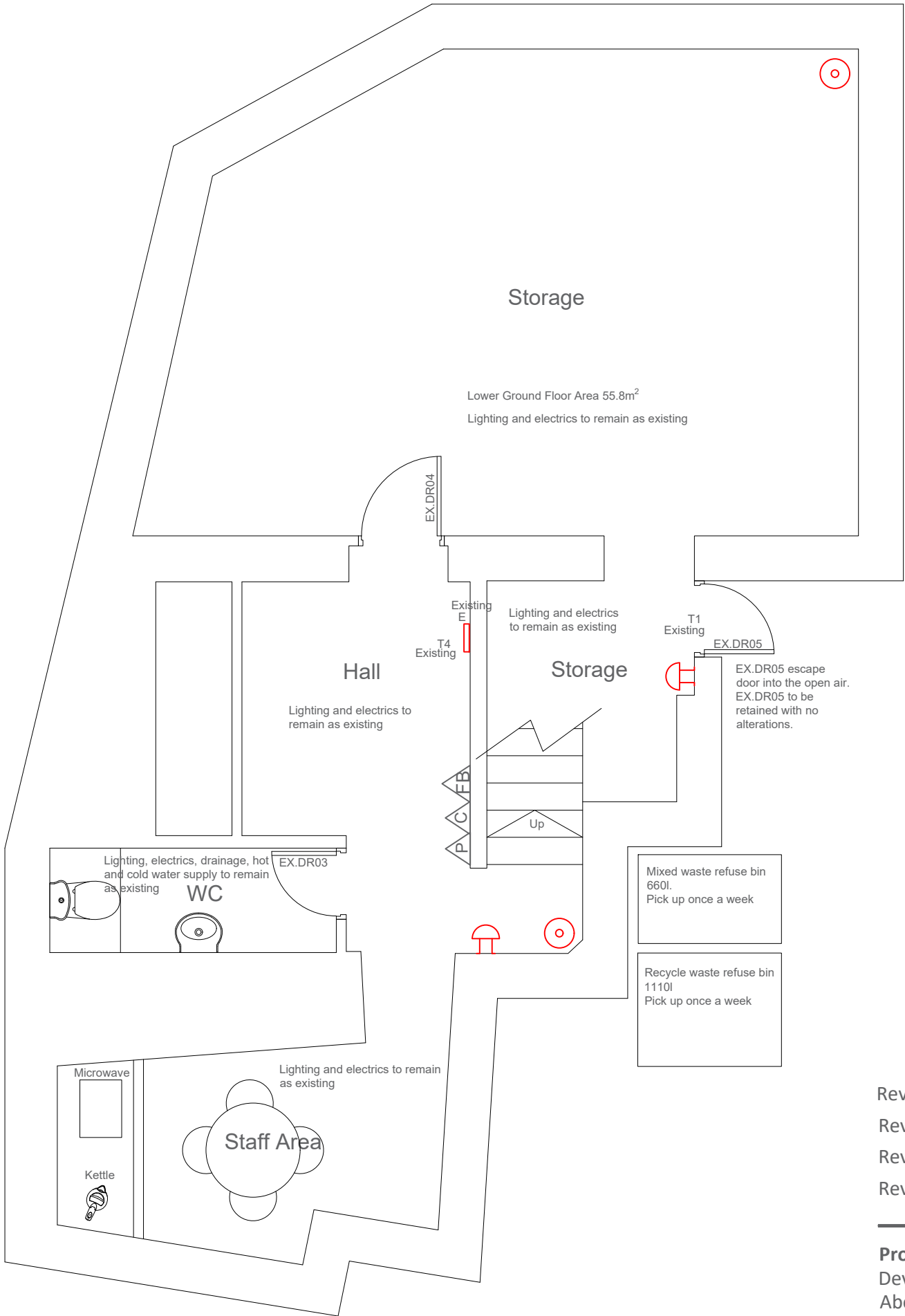
- Fire Extinguisher - 4 KG Powder
- Fire Extinguisher - 2 KG CO²
- Fire Extinguisher - 4 KG Water
- Fire Blanket
- Call Point
- Sounder
- Illuminated Emergency Exit Sign.
Emergency Light Fittings to be three-hour non-maintained units.



Proposed Ground Floor Plan
Scale 1:50



Elevation A
Scale 1:50



Proposed Lower Ground Floor Plan
Scale 1:50

- Red line indicates inaccessible alcohol display area
- Green line indicates accessible alcohol display area
- Blue line indicates accessible area
- The premises is for the sale of alcohol. There will not be any alcohol consumed on the premises.

01 Accessible Alcohol Display Area (Indicated by Green Line)

	Width	Height	Frontage Area
A Shelving	2.0m	x 2.0m	= 4.0m ²
B Shelving	0.66m	x 2.0m	= 1.32m ²
Total Accessible Display Area:			= 5.32m ²

02 Inaccessible Alcohol Display Area (Indicated by Red Line)

	Width	Height	Frontage Area
C Shelving	2.0m	x 2.0m	= 4m ²
Total Inaccessible Display Area:			= 4m ²

Total Alcohol Display Area = 9.32m²
Percentage of Display Area that is Alcohol = 21.23%

03 General Shelving

	Width	Height	Frontage Area
1 Shelving	2.5m	x 2.1m	= 5.2m ²
2 Shelving	3.1m	x 2.1m	= 6.5m ²
3 Chiller	3.8m	x 2.1m	= 7.9m ²
4 Freezer	1.6m	x 0.8m	= 1.2m ²
5 Shelving	2m	x 2.1m	= 4.2m ²
6 Shelving	2m	x 2.1m	= 4.2m ²
7 Shelving	2m	x 2.1m	= 4.2m ²
8 Shelving	2m	x 2.1m	= 4.2m ²
9 Shelving	1.2m	x 2.1m	= 2.5m ²
10 Coffee machine	0.9m	x 2.0m	= 1.8m ²
11 Shelving	1.6m	x 1.2m	= 1.9m ²

Total Display Area: = 43.8m²

Total Shop Floor Area = 38.9m²

Shop Floor Area = 33.35m²

Counter Floor Area = 5.55m²

Lower Ground Floor Area = 55.8m²

Total Display Area in Shop = 43.8m²

01 Accessible Alcohol Display Area = 5.32m²

02 Inaccessible Alcohol Display Area = 4m²

Total Alcohol Display Area = 9.32m²

Percentage of Display Area that is Alcohol = 21.23%

Revision D	Issued to Client	04.04.2025	AB
Revision C	Issued to Client	10.03.2025	AB
Revision B	Issued to Client for Comments	05.03.2025	AB
Revision A	Issued to Client for Comments	17.02.2025	AB

Project:
Development at 61 Powis Terrace,
Aberdeen, AB25 3PZ

All Design Architectural Services

Aberdeen Innovation Park
Campus 2, James Gregory Centre
Bridge of Don, Aberdeen, AB22 8GU

Drawing Title:
Proposed Licensing Plans

Telephone: 01224 701576
Website: www.all-design.co.uk

Scale:
1 : 50 @ A2
Date:
17th February 2025

Designer:
AB
Drawing Number:
AD 1807 / 04 Rev D

