

# Staff Governance Health & Safety Report

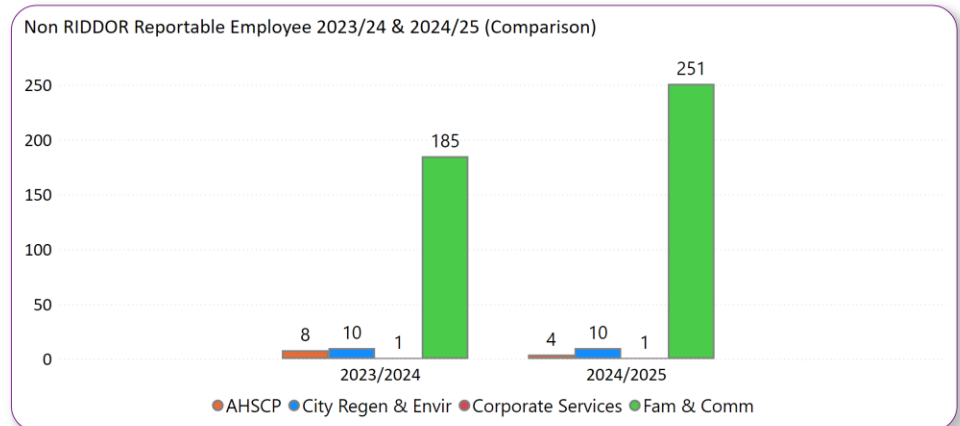
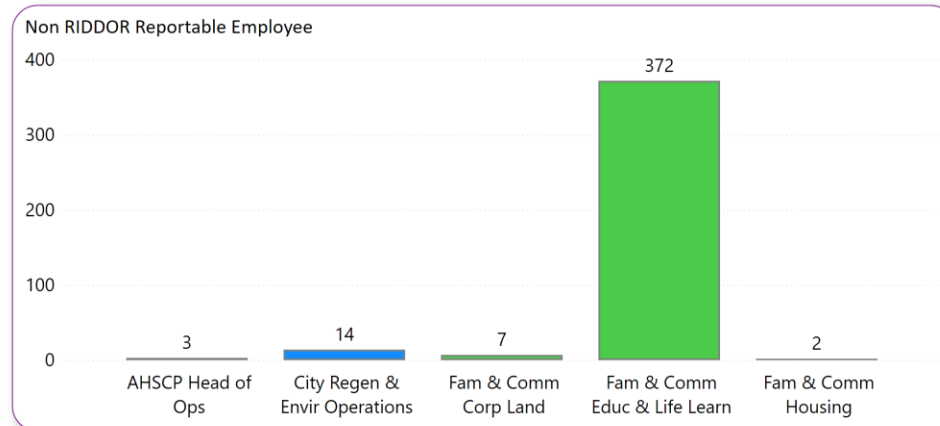
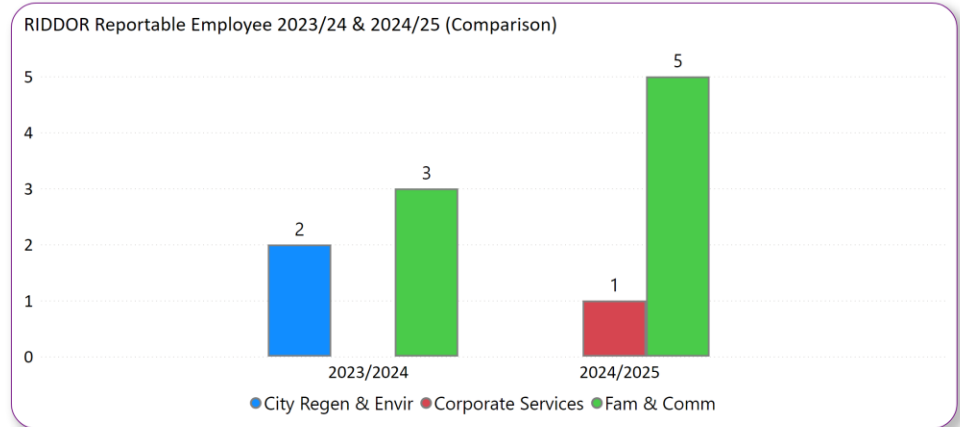
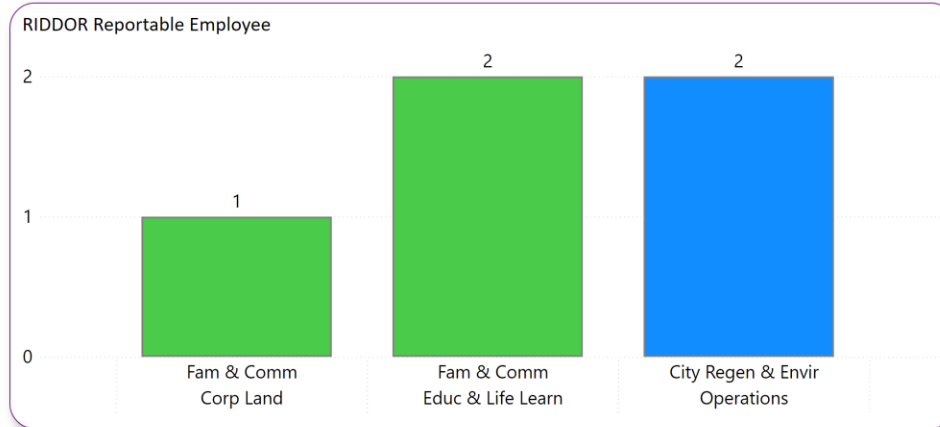
## Quarter 2 2025/2026 (Jul 25 to Sep 25)

### DISCLAIMER

The content of this Staff Governance H&S Report is confidential and protected by copyright. The relevant Data Stewards supplied the data used in this report. The report shows the position as at the dates identified within the report. Data and/or visuals (charts) contained within this Staff Governance H&S Report must not be copied, shared electronically or in hard copy, published or reproduced without the prior written consent of the Analytics & Insight Team (contact Claudine Mackie at [claudinm@aberdeencity.gov.uk](mailto:claudinm@aberdeencity.gov.uk)). If you find any errors or omissions please report this to the Analytics & Insight Team at the aforementioned email address.

## Reported H&S Incidents (Employee) Between Jul to Sep 2025

The following tables give breakdown of all employee incidents across all Functions and Clusters in Aberdeen City Council. The tables on the left initially show the number of incidents for each Cluster this reporting period with those tables on the right giving a quarter 2 comparison for each Function from 2023/24 to 2024/25 where applicable.

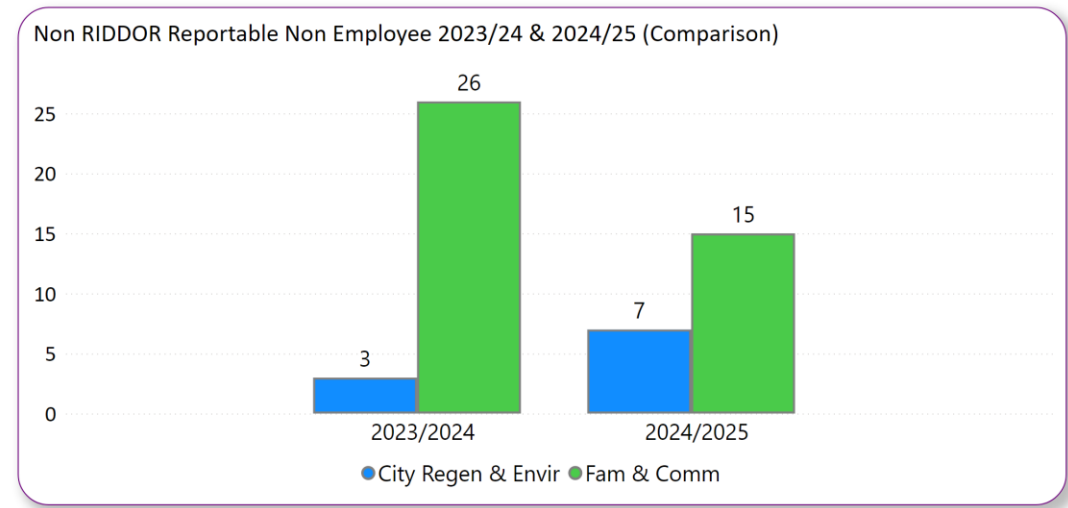
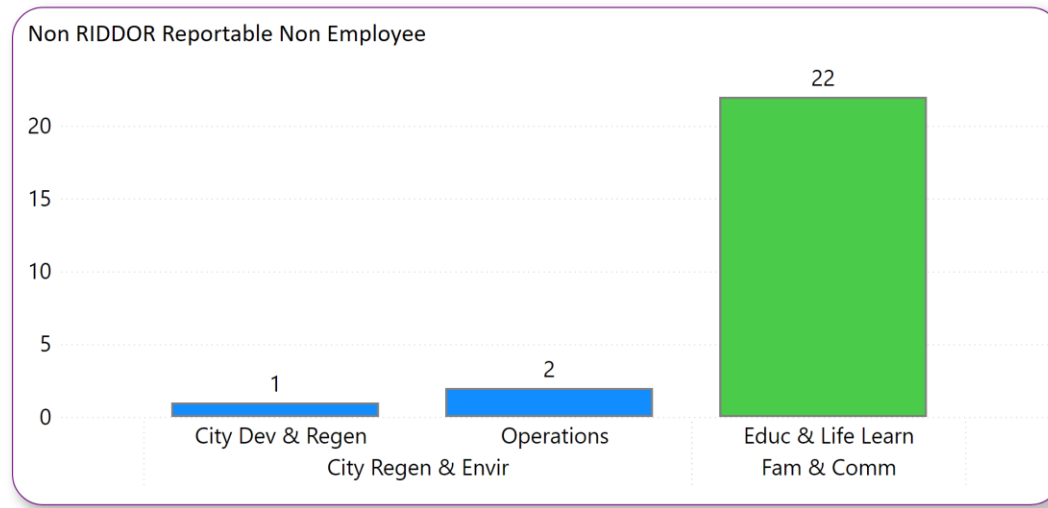
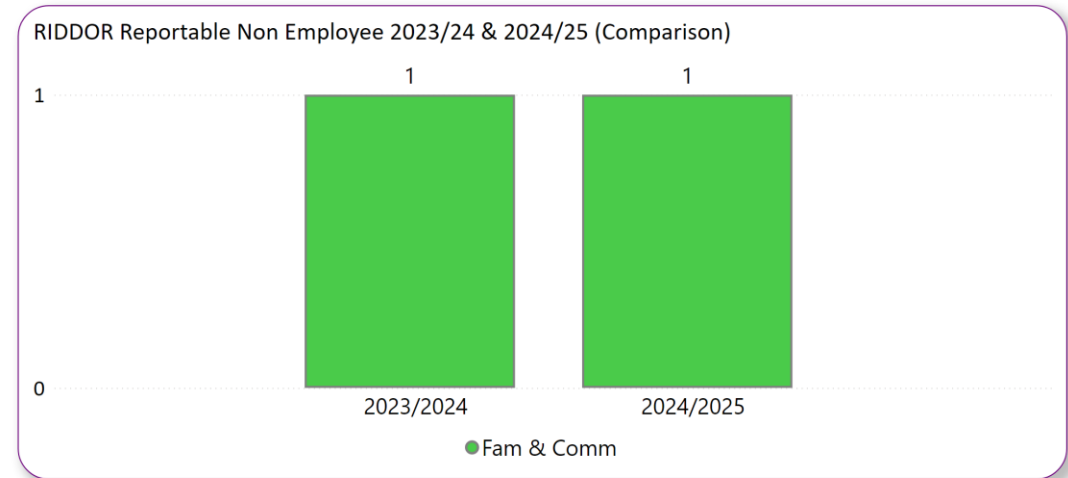
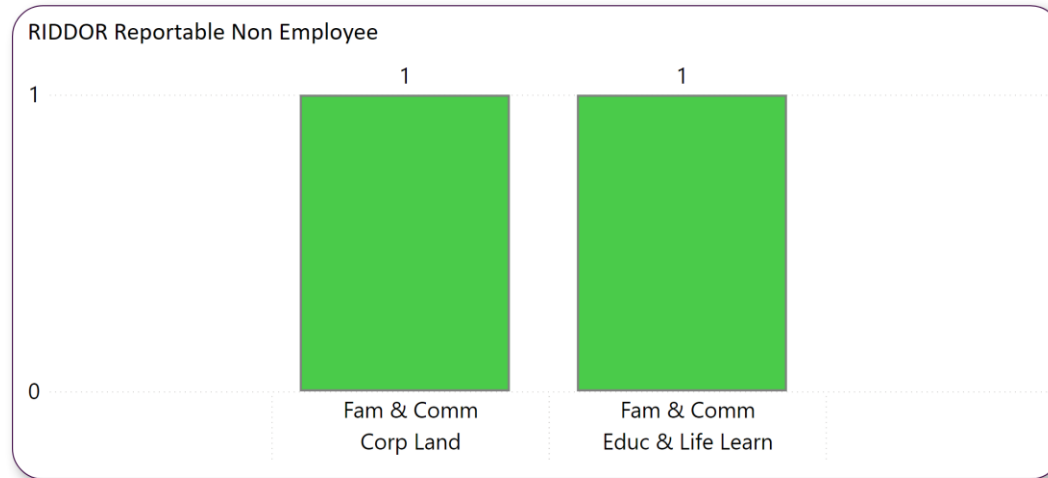


### Employee Incident Information

RIDDOR reportable incidents are reduced by 33% this quarter from comparative quarters for the last 2 years. Incident numbers meanwhile have increased by 38% from the previous year with Families and Communities being responsible for the majority of that increase. Poor behaviours still seem to make up the majority of these incidents. The number of incidents reported within the first 6 months is slightly less pro rata than the total for the 24/25 year.

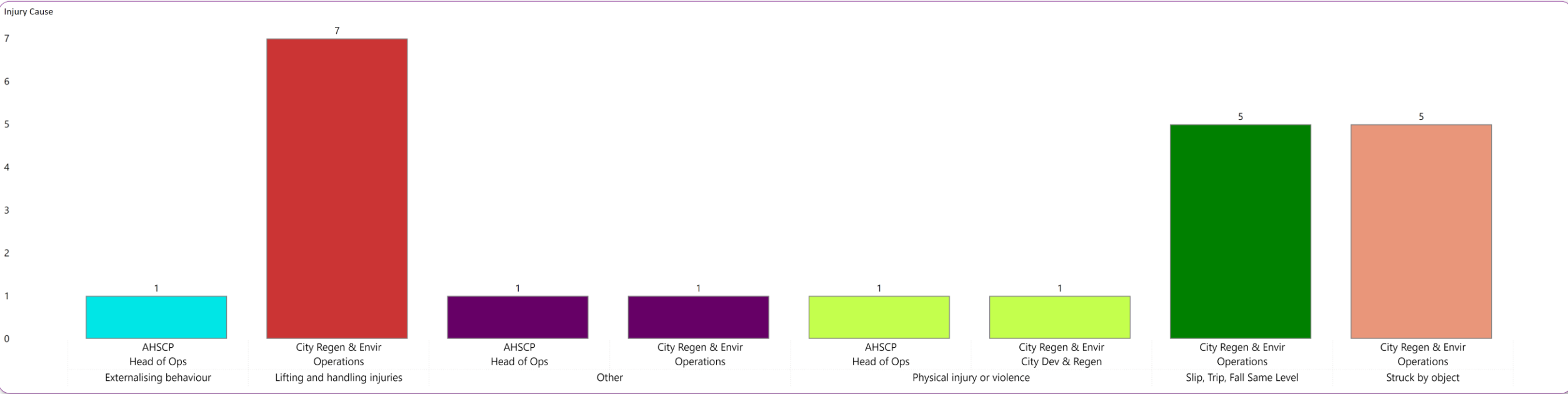
## Reported H&S Incidents (Third Party) Between Jul to Sep 2025

The tables below give information on those non-employee incidents which happened across all Functions and Clusters. Again the tables on the left show the current period for each Cluster, with those tables on the right giving a quarter 2 comparison for each function from 2023/24 to 2024/25 where applicable.



H&S Incident Causation  
Reported between Jul to Sep 2025

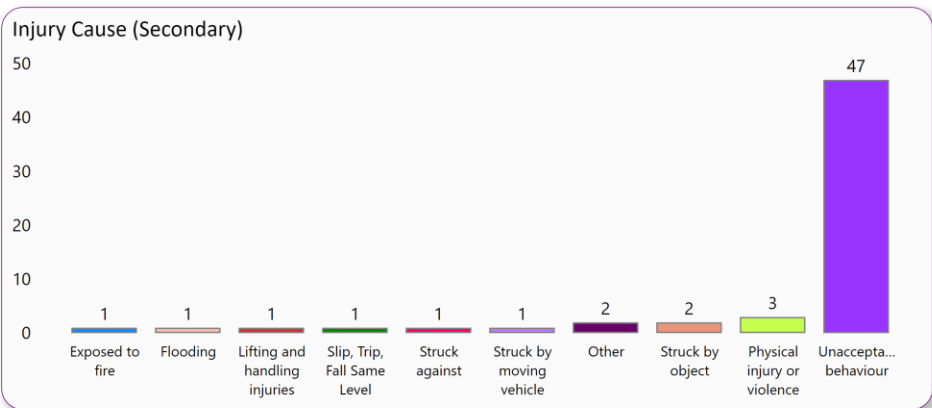
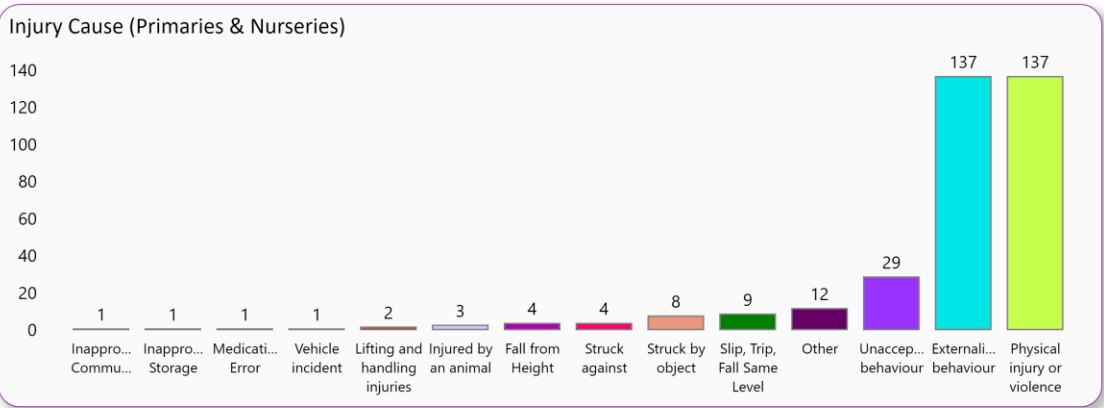
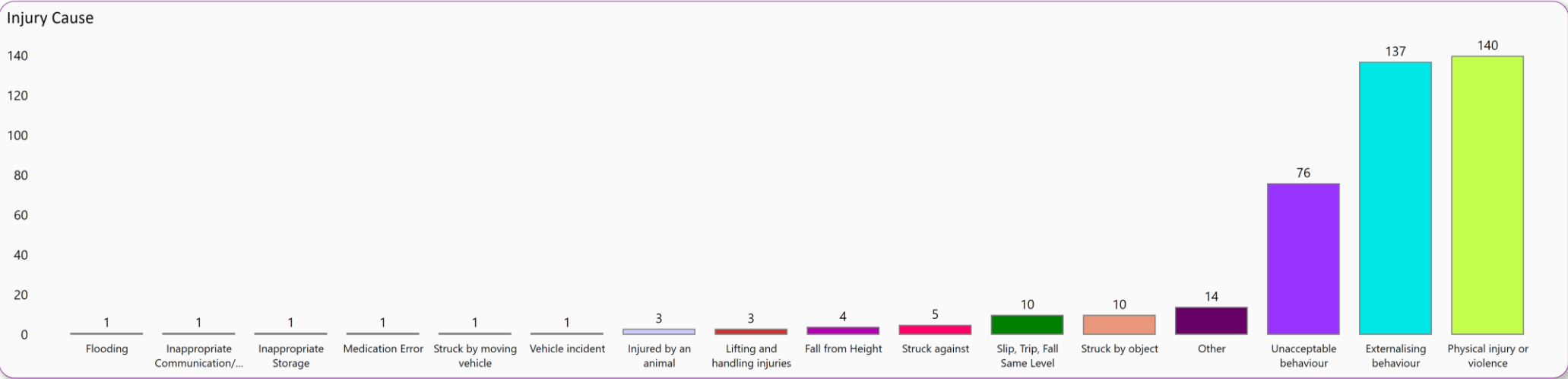
The table shows incident causation for each Cluster for this reporting period apart from Families & Communities, which is covered in the next page.



Injury Cause							
	Externalising behaviour	Lifting and handling injuries	Other	Physical injury or violence	Slip, Trip, Fall Same Level	Struck by object	Total
	1	7	2	2	5	5	22

Families & Communities reported H&S Incidents  
Between Jul to Sep 2025

The following tables give a breakdown of Families & Communities Incidents.

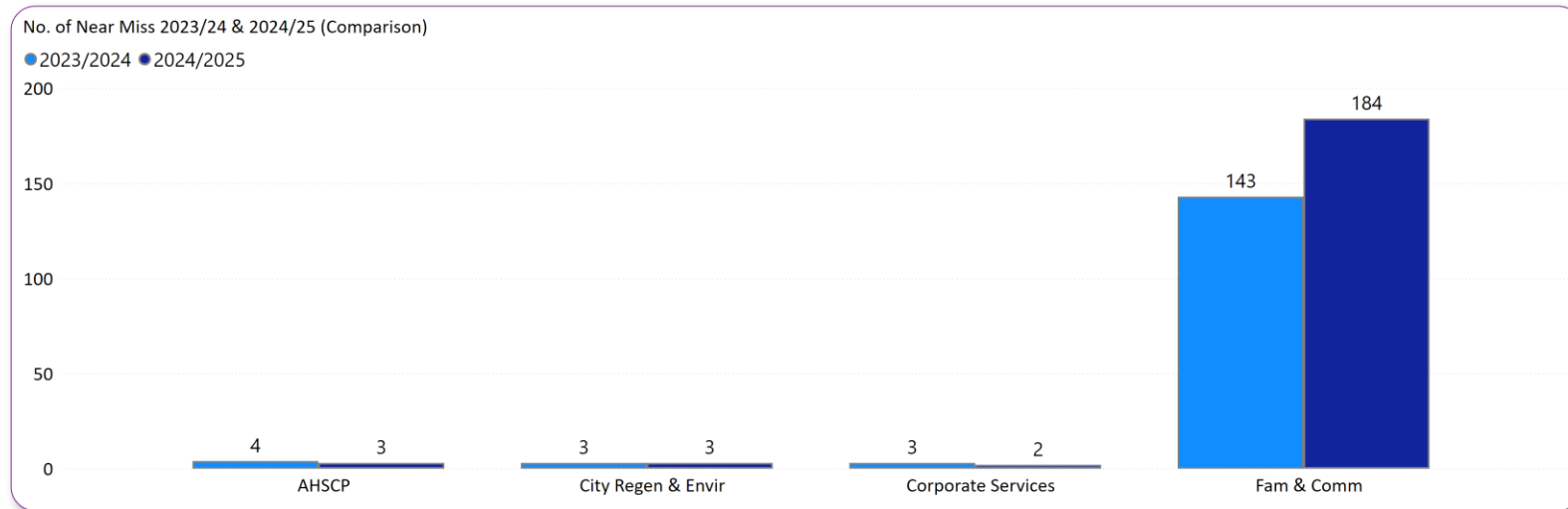
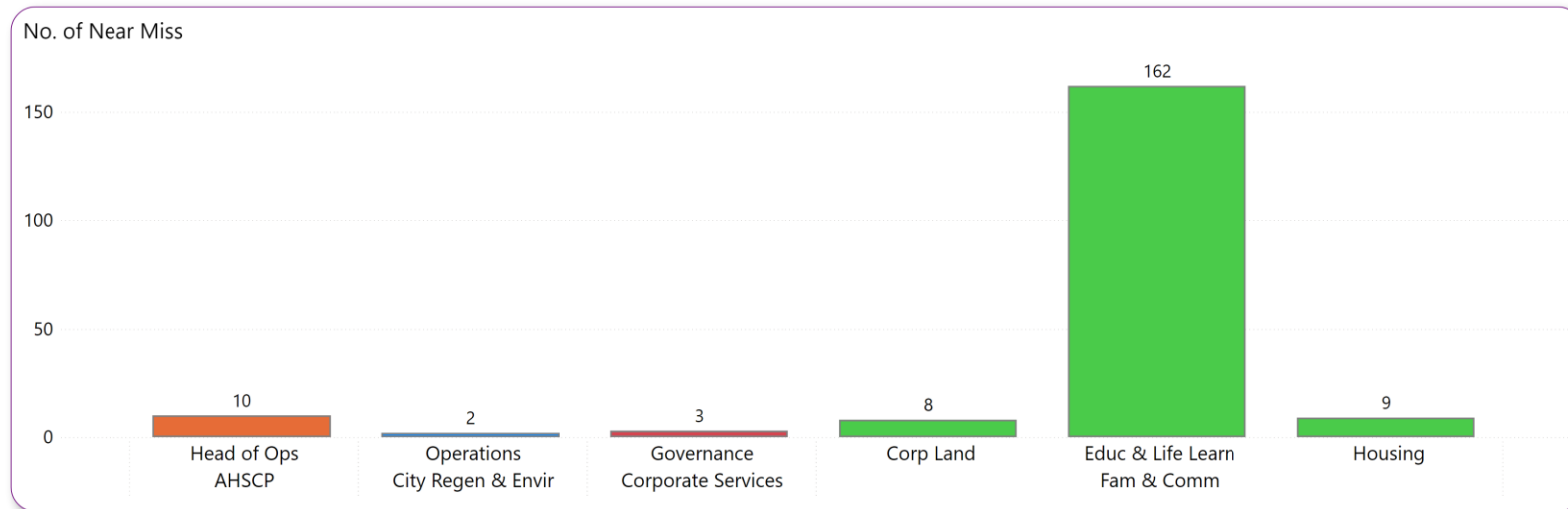


Injury Cause																	
	Flooding	Inappropriate Communication/abuse	Inappropriate Storage	Medication Error	Struck by moving vehicle	Vehicle incident	Injured by an animal	Lifting and handling injuries	Fall from Height	Struck against	Slip, Trip, Fall Same Level	Struck by object	Other	Unacceptable behaviour	Externalising behaviour	Physical injury or violence	Total
	1	1	1	1	1	1	3	3	4	5	10	10	14	76	137	140	408

## Reported H&S Near Miss Between Jul to Sep 2025

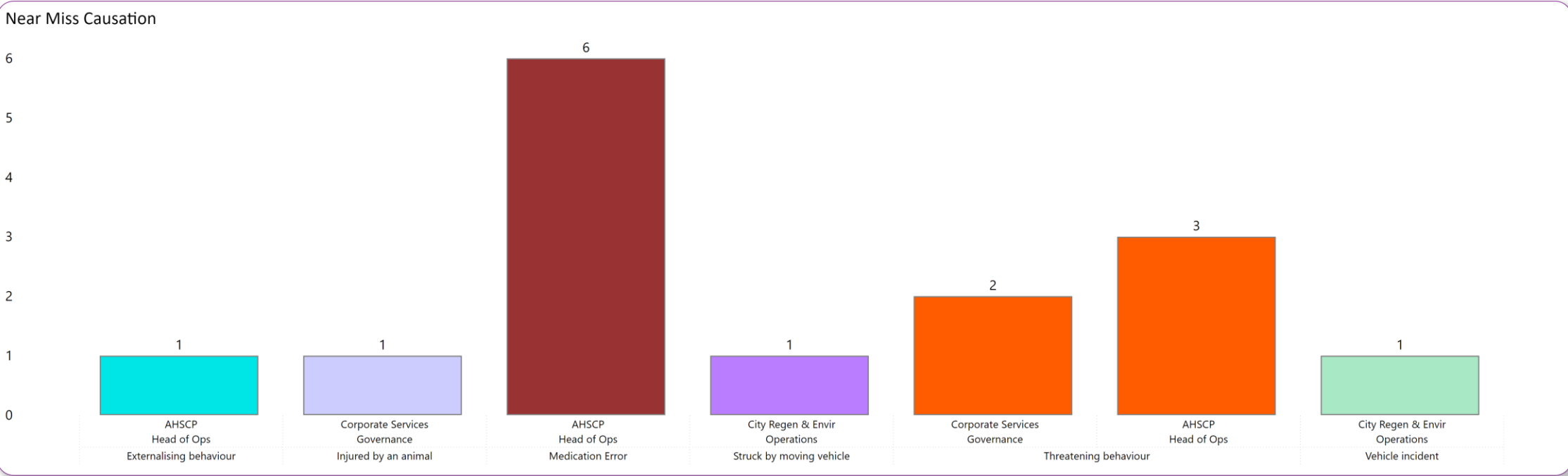
The tables below show information in relation to employee and non-employee Near Misses.

Top table: Total Near Misses for this reporting period for each Cluster. Bottom tables: quarter 2 comparison of Near Misses for each Function from 2023/24 to 2024/25.



Reported H&S Near Miss (Causation)  
Between Jul to Sep 2025

The table below shows information to a Function and Cluster level for employee and non-employee Near Misses apart from Families & Communities, which is covered in the next page.



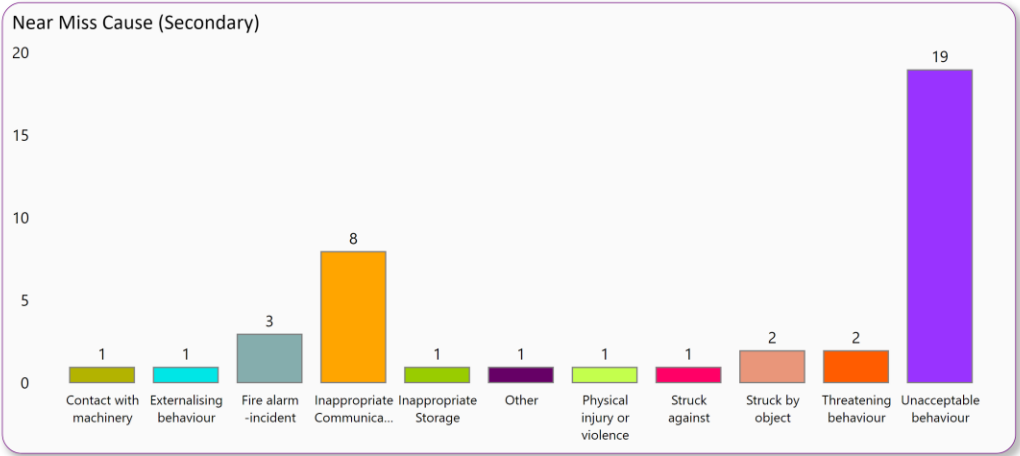
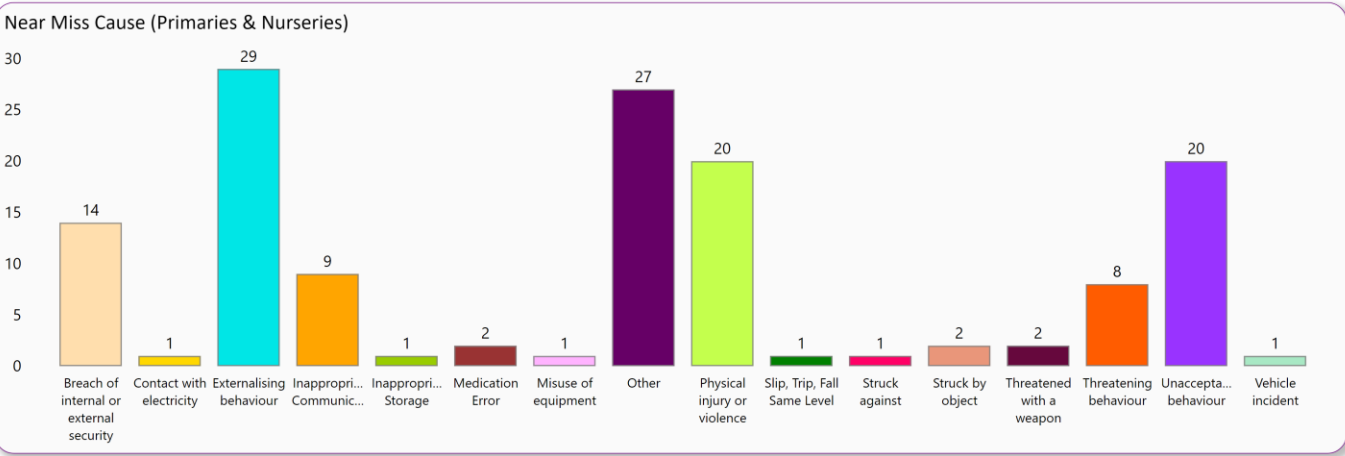
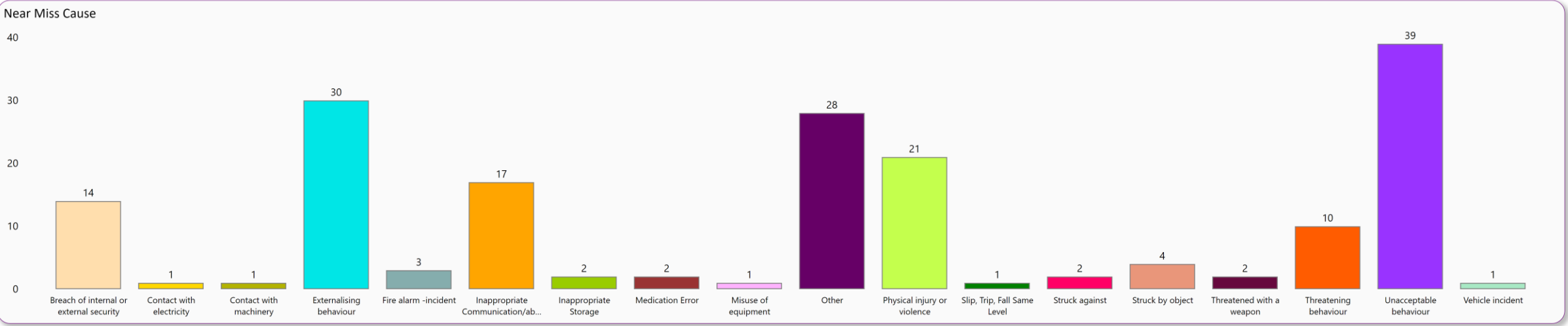
Near Miss Cause						
Externalising behaviour	Injured by an animal	Medication Error	Struck by moving vehicle	Threatening behaviour	Vehicle incident	Total
1	1	6	1	5	1	15

**Near Miss**

The number of near misses for this year is almost the same as the corresponding quarter last year. These again are mainly within the Education sector. However the number of reported near misses for the first 6 months of this reporting period is 35% of the total number reported for the last reporting year (25/25). There have been 6 medication errors within the last 3 months which were all within AHSCP

Families & Communities reported H&S Near Miss  
Between Jul to Sep 2025

The following tables give a breakdown of Families & Communities Near Miss.



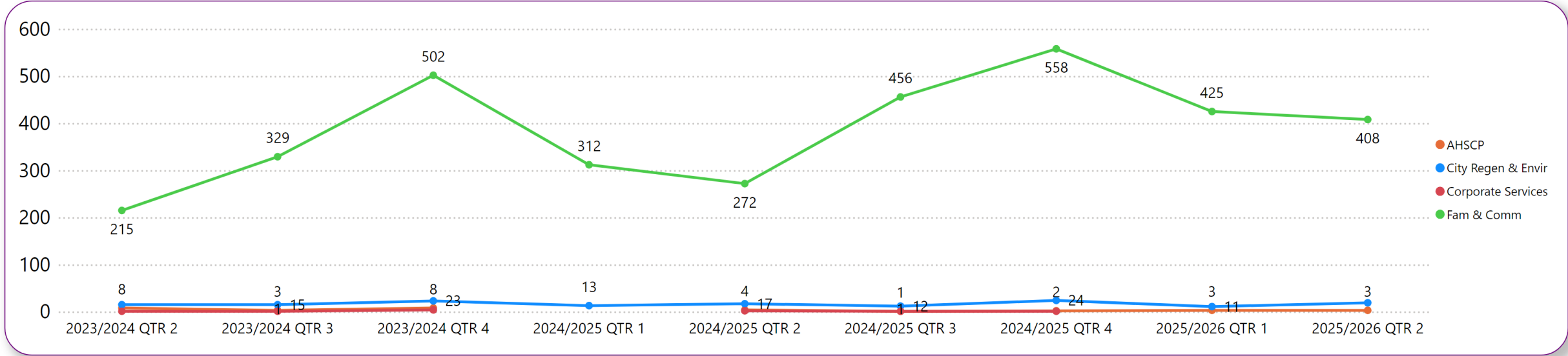
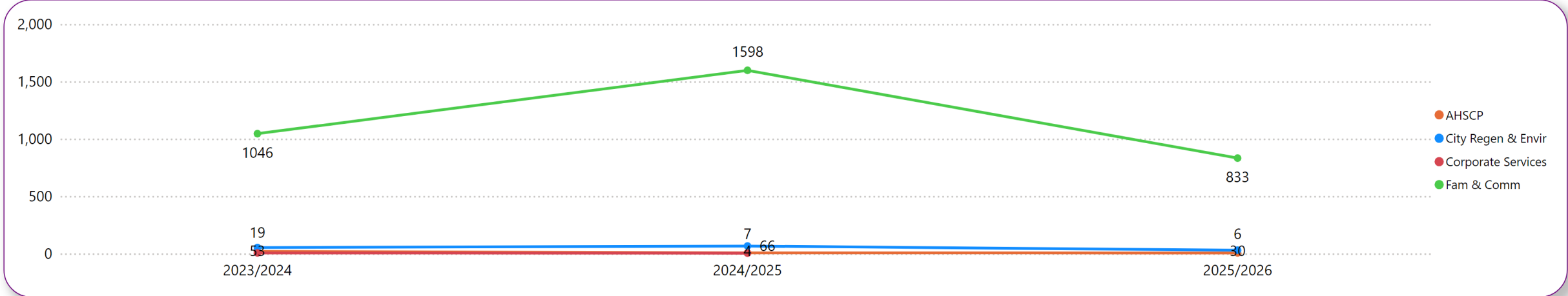
Near Miss Cause																			
	Breach of internal or external security	Contact with electricity	Contact with machinery	Externalising behaviour	Fire alarm - incident	Inappropriate Communication/abuse	Inappropriate Storage	Medication Error	Misuse of equipment	Other	Physical injury or violence	Slip, Trip, Fall Same Level	Struck against	Struck by object	Threatened with a weapon	Threatening behaviour	Unacceptable behaviour	Vehicle incident	Total
	14	1	1	30	3	17	2	2	1	28	21	1	2	4	2	10	39	1	179



# Reported Incidents

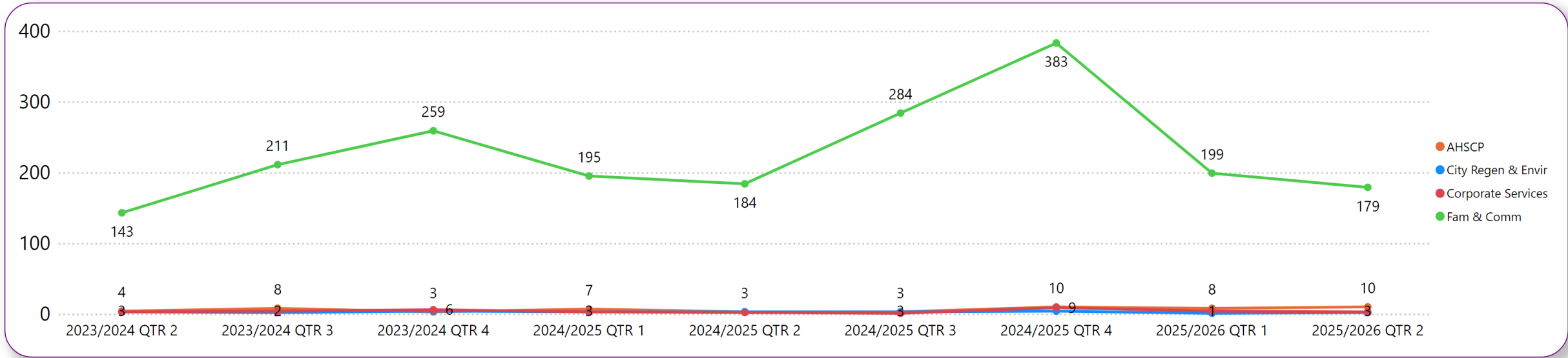
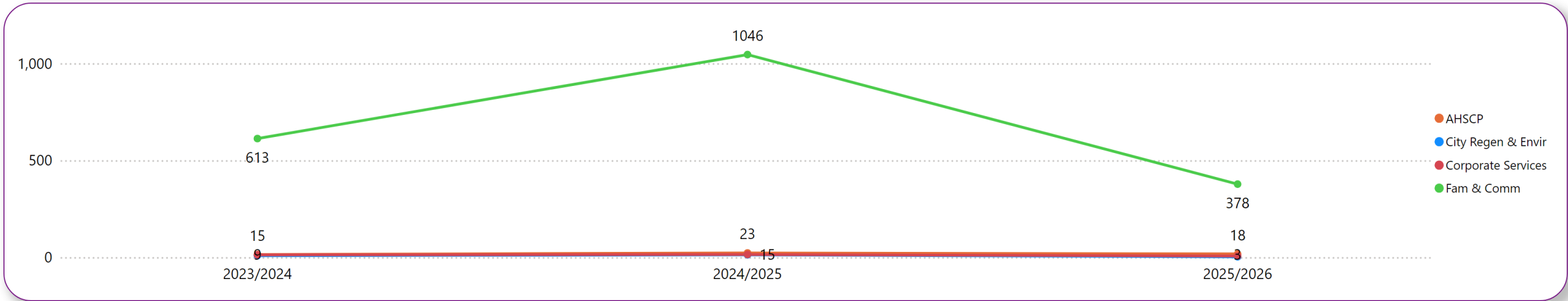
## From Q2 2023/24 to Q2 2025/26

The tables provides information on the **total number** of incidents from 2023/24 to 2025/26 to Function level.



# Reported Near Miss From Q2 2023/24 to Q2 2025/26

The tables provides information on the **total number** of near misses from 2023/24 to 2025/26 to Function level.



Reported Incidents in Schools  
(2024 & 2025)

The tables below provide information on the number of reported incidents in Schools each week during 2024 and 2025. Those weeks with red markers represent incidents (if any), noted during the Easter, Summer, October and Christmas holidays.

