

## ABERDEEN CITY COUNCIL

---

<b>COMMITTEE</b>	Education and Children's Services Committee
<b>DATE</b>	25 November 2025
<b>EXEMPT</b>	No
<b>CONFIDENTIAL</b>	No
<b>REPORT TITLE</b>	Aberdeen City's Child Protection Committee Annual Report 2024-25
<b>REPORT NUMBER</b>	F&C/25/266
<b>EXECUTIVE DIRECTOR</b>	Eleanor Sheppard
<b>CHIEF OFFICER</b>	Graeme Simpson
<b>REPORT AUTHOR</b>	Amy Anderson
<b>TERMS OF REFERENCE</b>	2.1, 2.2, 2.3

---

### 1. PURPOSE OF REPORT

- 1.1 To share Aberdeen City's Child Protection Committee (CPC) Annual Report 2024-25 to provide assurance that the work of the CPC is effectively helping reduce risks to children and young people.

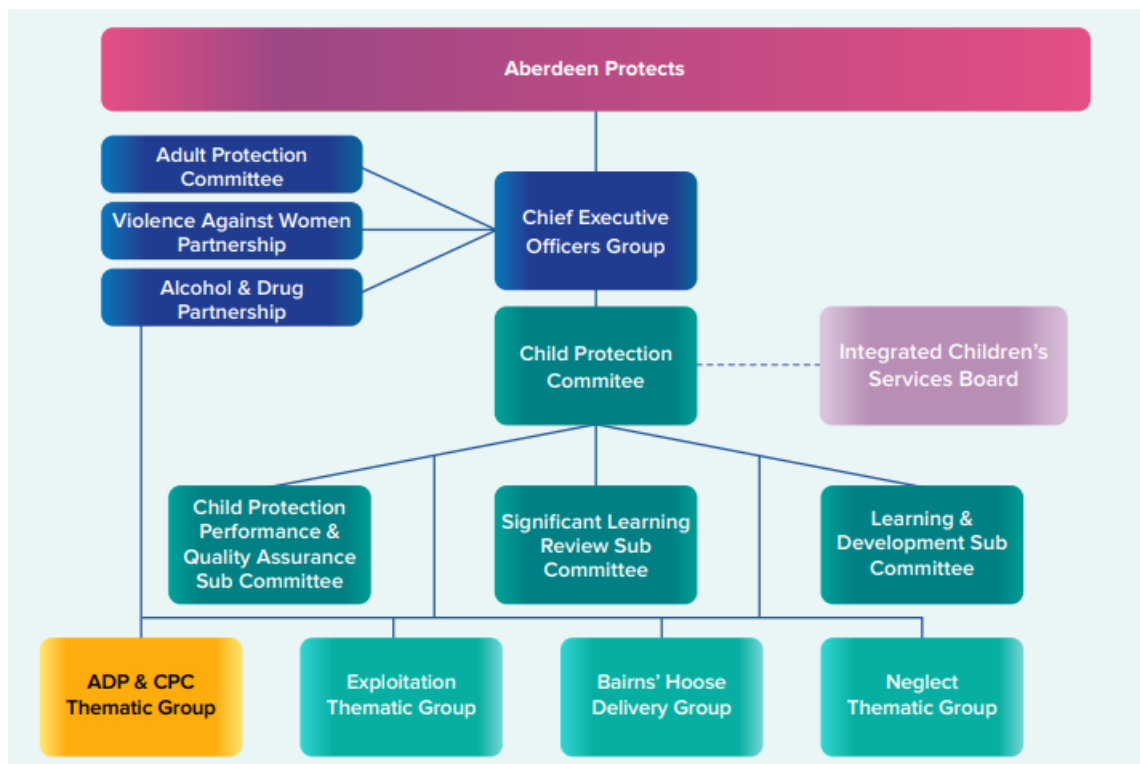
### 2. RECOMMENDATIONS

That the Committee:-

- 2.1 Notes the content of the CPC's Annual Report 2024-25; and
- 2.2 Instructs the Chief Social Work Officer to provide Committee with a further report in November 2026 detailing the continuing impact and effectiveness of partnership work in relation to child protection.

### 3. CURRENT SITUATION

- 3.1 Aberdeen City's Child Protection Committee (CPC) is a multi-agency strategic partnership governed by the Chief Executive Officers of Aberdeen City Council, NHS Grampian and the Police Commander for the area. It is committed to providing individual and collective leadership and direction for the management of child protection services in the Aberdeen City area. Areas for improvement which are identified through self-evaluation are driven through the Child Protection Improvement Programme.
- 3.2 The CPC works collaboratively with other strategic partnerships in the City such as the Children's Services Board, Aberdeen Violence Against Women & Girls Partnership (particularly in relation to child protection and domestic abuse), Adult Protection Committee, Multi Agency Public Protection Arrangements (MAPPA) and the Alcohol and Drugs Partnership under the banner of Aberdeen Protects as is outlined in the visual below.



- 3.3 The CPC routinely analyses and evaluates the impact of our collaborative work to keep children safe. Areas for improvement are detailed in the CPC Child Protection Programme 2024-26 which aims to improve the safety, wellbeing and life chances of vulnerable children and young people. Improvement activity is reported to and monitored by the CPC through its connected sub committees which are; the Learning Review, the Performance & Quality Assurance, and the Learning & Development sub committees. Improvement activity set out in the Child Protection Programme 2024-2026, is and will be subject to the inspection scrutiny of the Care Inspectorate.
- 3.4 The CPC produces a statutory Annual Report to demonstrate the work of the CPC over a full year in both leading and improving child protection arrangements. The report is informed by the now well embedded Quality Assurance Framework (QAF) and audit programme.
- 3.5 The Annual Report highlights many achievements including the development of our Bairsn's Hoose following our successful pathfinder application in 2023, several self evaluation activities such as the distribution, collection and analysis of the Care Inspectorates Staff Survey, a case file reading exercise, joint development sessions with the Children's Services Board (CSB), and self evaluation of our progress to achieve the Bairsn's Hoose Standards.
- 3.6 The Child Protection Improvement Programme 2024 – 2026 commenced in August 2024. The programme was informed by learning from our data, audits, notifications for learning reviews, and our self evaluation activity. The CPC priorities set out in the Child Protection Programme 2024-2026 are:
- Neglect
  - Child Protection & Parental Substance Abuse
  - Exploitation

- Child Protection & Domestic Abuse
- Interdisciplinary Multi-Agency Working
- Learning & Development

- 3.7 Aberdeen City was last inspected in 2019 and received a rating of **Good**. The CPC agreed, based on the evidence from the self evaluation activity undertaken and embedding of the identified areas for improvement, that as a Partnership we have undoubtedly improved since the last inspection.
- 3.8 In January 2025, the Partnership were informed that Scottish Government had instructed the Care Inspectorate to change the focus of strategic inspections to have a focus on children who are looked after at home by their parents. This was in recognition of the fact that outcomes for this group of looked after children are amongst the poorest of all looked after children groups. Key to the inspection will be how well, as a Partnership, we are working to support children to remain at home where it is safe for them to be there. The updated methodology for undertaking these inspections is yet to be published. Despite a change in focus for inspection, activity undertaken by the Partnership over the last 12 months will only enhance our position and our capacity for improvement.
- 3.9 As part of our commitment to continuous improvement and in response to evolving national inspection priorities, the CPC and CSB initiated Audit 8 under the Quality Assurance Framework 2024–2025 in June 2025. This audit focuses on services provided to children in the ‘care system’ who are living at home with their parents under compulsory supervision orders. Through this audit, we aim to assess the quality, consistency and effectiveness of multi-agency support, identify areas of strength and development, and ensure that children looked after at home receive the support they need to achieve improved outcomes. This audit activity will be extended further by engaging with staff who would support children looked after at home, and engagement with children (and their family) who are looked after at home. The findings and recommendations from this audit will be presented to the CPC in December 2025.
- 3.10 Feedback from our Care Inspectorate Link Inspector, who attends CPC meetings, continues to reflect very positively on the work of the partnership.

#### **4. FINANCIAL IMPLICATIONS**

- 4.1 There are no direct financial implications arising from the recommendations of this report

#### **5. LEGAL IMPLICATIONS**

- 5.1 There are no direct legal implications arising from the recommendations of this report.

#### **6. ENVIRONMENTAL IMPLICATIONS**

- 6.1 There are no direct environmental implications arising from the recommendations of this report.

## 7. RISK

Category	Risks	Primary Controls/Control Actions to achieve Target Risk Level	*Target Risk Level (L, M or H)  *taking into account controls/control actions	*Does Target Risk Level Match Appetite Set?
<b>Strategic Risk</b>	No significant risks identified			
<b>Compliance</b>	No significant risks identified			
<b>Operational</b>	Required improvements and developments in practice are not identified and actioned.	Children, young people, their families and the professional workforce can be assured that services in Aberdeen City are continually appraised in order to improve the quality of locally delivered services.	M	<b>Yes</b>
<b>Financial</b>	No significant risks identified			
<b>Reputational</b>	Organisational failings in relation to child protection can bring significant media interest and scrutiny of services delivered to children and young people.	The public can be assured that: the Council ensures compliance with legal requirements, national standards and guidance; partners respond to self and external scrutiny; and identified areas for improvement are addressed.	M	<b>Yes</b>
<b>Environment / Climate</b>	No significant risks identified			

## 8. OUTCOMES

<b><u>COUNCIL DELIVERY PLAN 2025-26</u></b>	
	<b>Impact of Report</b>
<b>Aberdeen City Council Policy Statement</b>  <u><a href="#">Working in Partnership for Aberdeen</a></u>	The work of the CPC is aligned to other strategic partnerships, namely the Children's Services Board, Violence Against Women & Girls Partnership, Alcohol and Drug Partnership, and the Adult Protection Committee, whose aims are aligned collectively to the Council Delivery Plan 2025-26 and

	the Working in Partnership for Aberdeen Policy Statement.
<a href="#">Local Outcome Improvement Plan</a>	
Prosperous People Stretch Outcomes	The functions of the CPC are central to supporting and assuring that the multi agency Children's Services partners deliver on the outcomes of the LOIP – Prosperous People (Children and Young People) and People (Adults) Stretch Outcomes 3, 4, 5, 6, 7, 8, 10, 11, and 12 to ensure our children are safe from harm. Children, young people and families who are adequately protected from threats to their health, safety and economic wellbeing are more likely to prosper than those who are not.
<b>Regional and City Strategies</b>	The work of the CPC is relevant to Aberdeen City Council Delivery Plan, the Local Outcome Improvement Plan, the Children's Services Plan and the Child Protection Improvement Programme

## 9. IMPACT ASSESSMENTS

Assessment	Outcome
<b>Integrated Impact Assessment</b>	No assessment required. I confirm this has been discussed and agreed with Graeme Simpson, Chief Social Work Officer, Families & Communities – Children's Social Work on 17 October 2025.
<b>Data Protection Impact Assessment</b>	Not required for this report
<b>Other</b>	Not required for this report

## 10. BACKGROUND PAPERS

10.1 None

## 11. APPENDICES

11.1 Aberdeen City CPC Annual Report 2024-2025

## 12. REPORT AUTHOR CONTACT DETAILS

<b>Name</b>	Amy Anderson
<b>Title</b>	CPC Lead Officer
<b>Email Address</b>	AmyAnderson@aberdeencity.gov.uk