

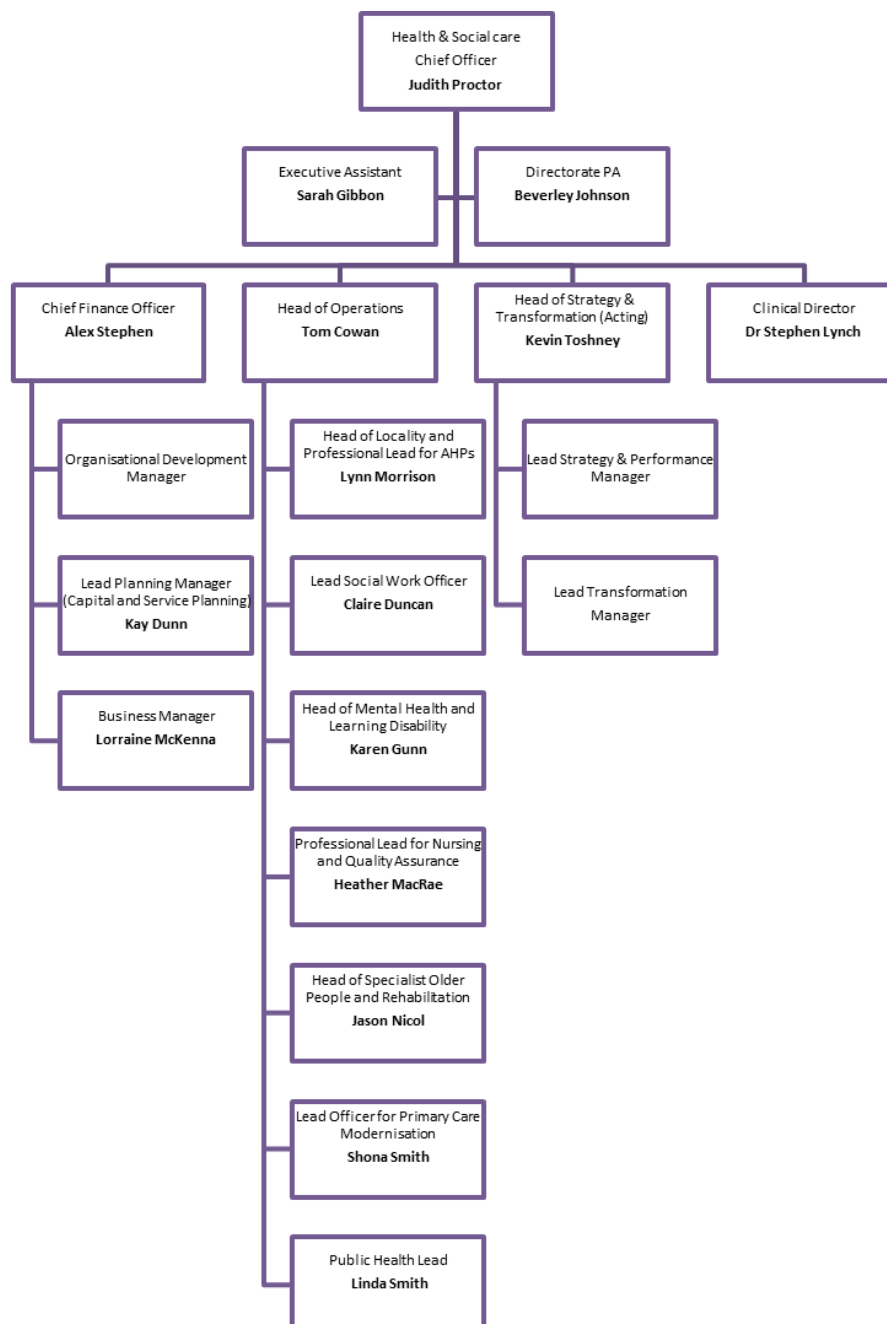
Aberdeen City Health & Social Care Partnership

Aberdeen City Health & Social Care Partnership was launched on 1st April 2016, bringing NHS and Aberdeen City Council services together to benefit local communities. The new Partnership delivers adult primary health care and adult social care to the people of Aberdeen, with a total annual revenue budget of some £255million.

The organisation is responsible for people’s health and care needs and for ensuring people receive co-ordinated services which are as seamless as possible – in the right place, at the right time, in the right setting. The ACHSCP will oversee the formation of integrated, multi-skilled teams – comprising, for example, GPs, community nurses, social workers, voluntary sector colleagues and mental health nurses – who will work to support patients in the community and avoid unnecessary admissions to hospital.

The Partnership is overseen by an Integration Joint Board (IJB), made up of representatives from the local authority and the NHS, along with voluntary sector, carer, patient and service-user representatives.

Structure Chart



Aberdeen City Council Contact Details

Name	Email	Telephone Number
Judith Proctor	jproctor@aberdeencity.gov.uk	01224 655725
Sarah Gibbon	sgibbon@aberdeencity.gov.uk	01224 655729
Beverley Johnston	bjohnson@aberdeencity.gov.uk	01224 655725
Alex Stephen	alestephen@aberdeencity.gov.uk	01224 555728
Lynn Morison	lymorrison@aberdeencity.gov.uk	01224 495683
Claire Duncan	claduncan@aberdeencity.gov.uk	01224 (52)2426
Shona Smith	N/a	01224 789555