



## PLANNING DEVELOPMENT MANAGEMENT COMMITTEE

**30<sup>th</sup> September 2021**

**Redevelopment of an existing site, including change of use to class 3 (food and drink) with erection of 2no. drive thru restaurants (sui generis) with associated infrastructure and car parking**

**Craigshaw House, Craigshaw Road, Aberdeen, AB12 3AS**

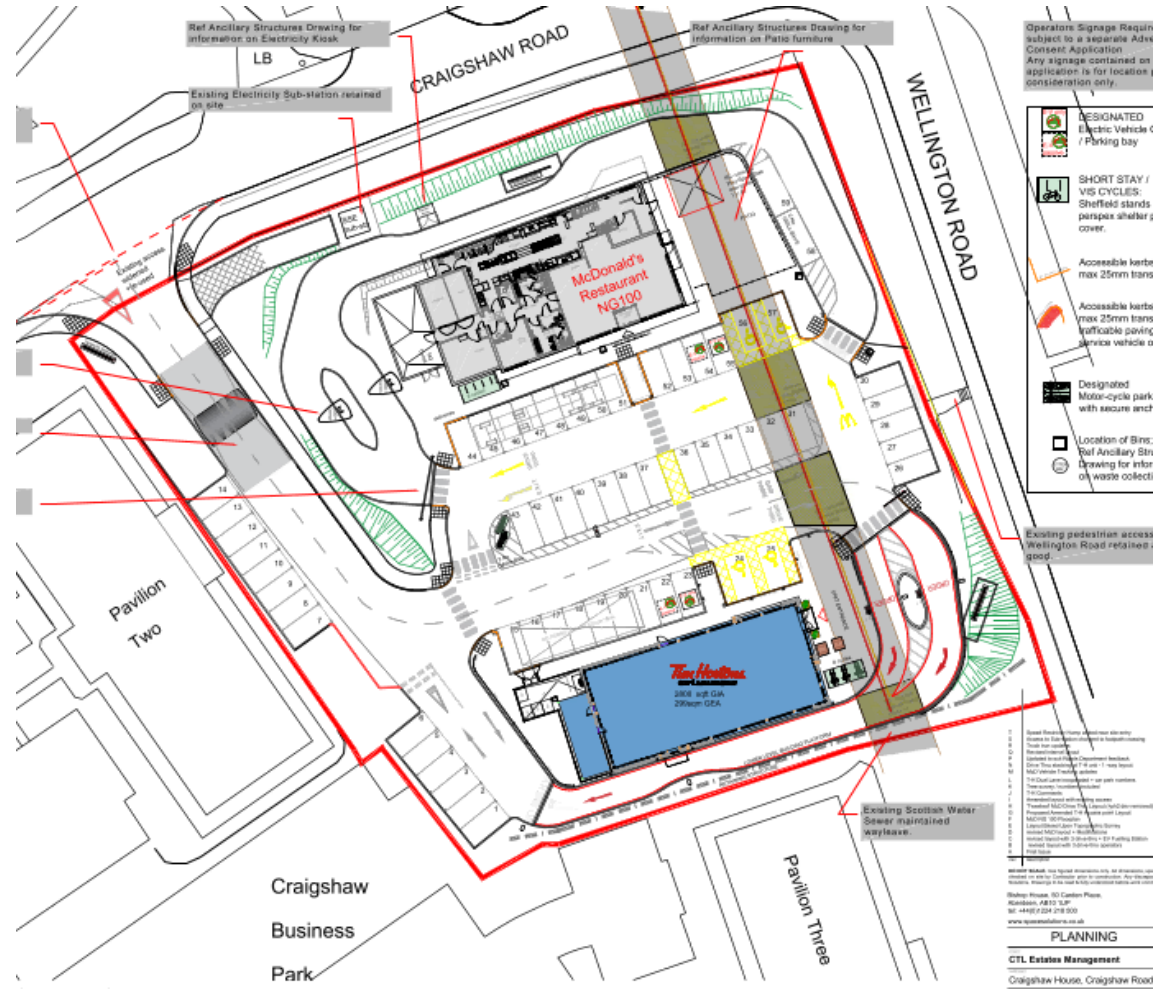
**Application Ref: 210015/DPP**

# Location Plan

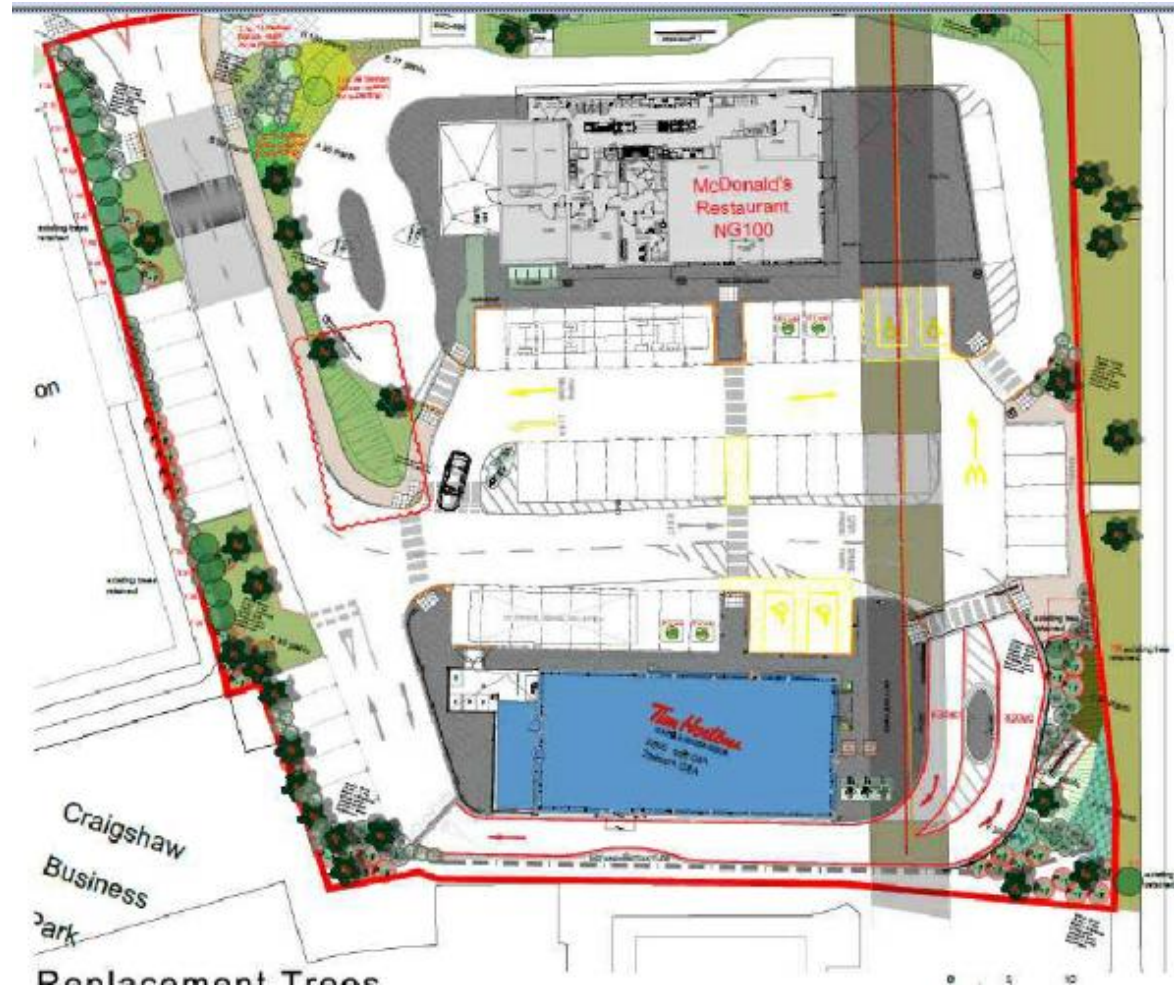


— App  
— Land

# Site Plan (Proposed)



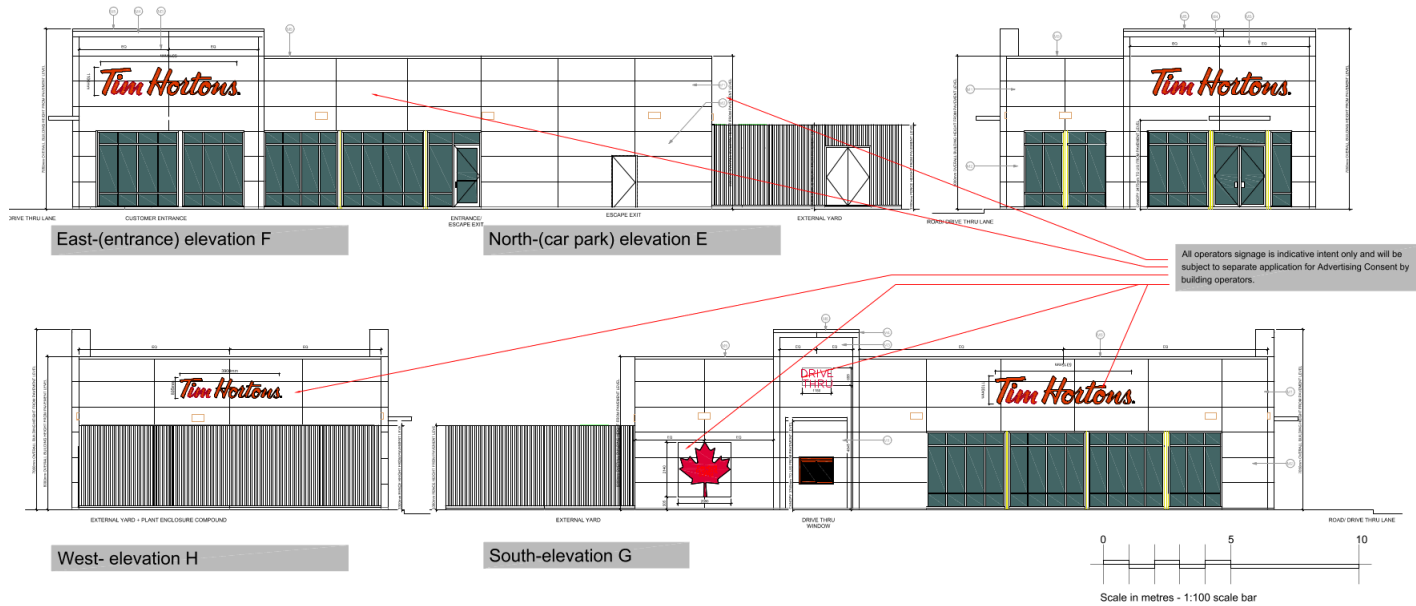
# Landscaping Plan (Proposed)



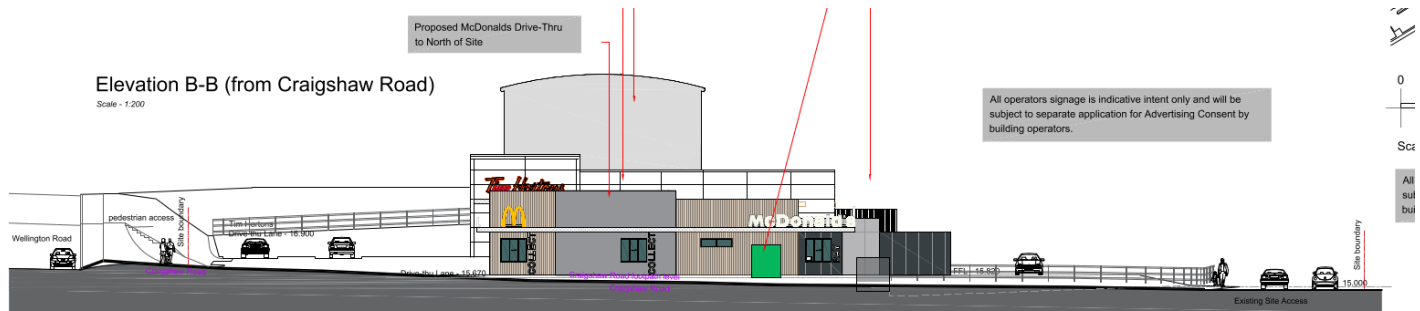
# Elevational Details (Proposed – Northern Unit)



# Elevational Details – Southern Unit

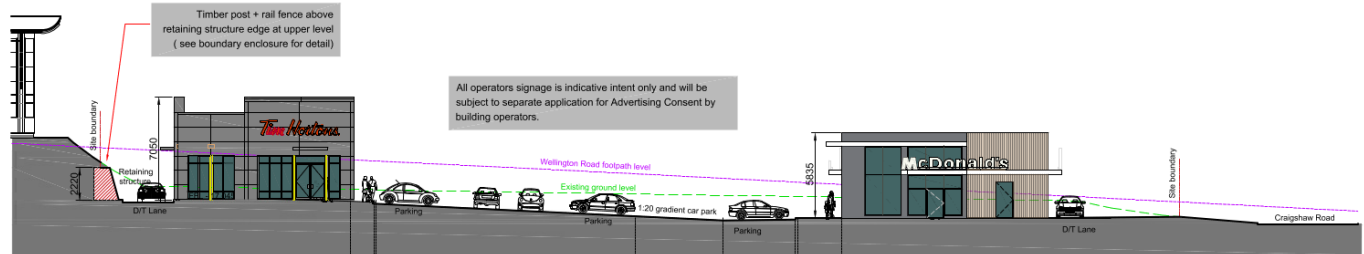


# Site Cross Sections



Sectional Elevation A-A (from Wellington Road)

Scale - 1:200



0 5 10 20

# Site Overview – Google Maps (Pre-Demolition)





# Site Photos – South-East and North-East



# Site Photos – North-East Corner of Site and Central from Existing Pedestrian Access



# Site Photos – from Northern boundary



# Site Photo - Access

