

## **APPENDIX C – Programme Development Pack**

**The undernoted paragraph numbers and titles link to the main report. The narrative below expands on areas of the report and provides supporting graphics.**

### **2. RECOMMENDATION(S): Design Progress**

#### **Recommendation 2.1**

**The undernoted provides a summary narrative of all the features listed within recommendation 2.1 of the main report that will now progress to Full Business Case. This summary outlines how the features will look and function:**

The Concept Masterplan is centred around a re-imagined Urban Parkland setting, creating a transformational and vibrant new Beachfront destination for the City of Aberdeen.

The preferred Rope Works concept, inspired by the organic form of the rope weave, unravels into strands to form a hierarchical network of sinuous footpaths and desire routes, extending down from Beach Boulevard and opening up towards the heart of the Masterplan.

The open strands shape the Masterplan framework to create the geometry of the key elements of the proposal, including areas of Arrival, Play, Parkland, Gathering and Shelter. Natural landforms offer protection from the elements, with proposed dune formations providing shelter from North Easterly winds.

The Rope Works concept allows the main desire route from Castlegate to flow down Beach Boulevard and transition from a formal character to more natural, softer and playful forms, as the pathways extend out organically to link the key features of the Masterplan.

The main features of the Rope Works conceptual Masterplan are outlined below:

1. New Amphitheatre
2. New Events Field
3. New Urban Park Areas
4. New Sports Areas
5. Pump Track
6. Landscaped Mounding Features
7. Reconfiguration Works / Beach Landscaping
8. Interventions / Upgrades Along Beach
9. Broadhill (Public Realm / Landscape)
10. Gateway Building
11. Hub Building
12. New Canopy Features
13. New Amphitheatre (Canopy Structure)
14. Broadhill (Structures)
15. Beach Boulevard
16. Justice Street Roundabout



Key Features of Rope Works Masterplan



Concept rendered masterplan

## Design Opportunities

The Rope Works strategy allows all individual elements of the Masterplan to flow together organically, while offering maximum flexibility for future design development.

The Design Team have explored a number of complementary architectural opportunities within the wider Masterplan area, with the potential for flexible structures to be integrated into the design:

1. **Gateway Building**
2. **Hub Building**
3. **Lightweight Canopy Structures**
4. **Amphitheatre**

These flexible structures could be used for a variety of activities, with the ability to accommodate changes in use as the Masterplan design develops and evolves. Social Enterprise opportunities for supporting local business could be accommodated within a series of object buildings within the Urban Park, located at key junctions within the public realm network, offering opportunity to pause, engage and refresh on the Beachfront journey.

The **Gateway Building** acts as a sculptural landmark offering an enhanced sense of arrival to the Beachfront, with potential for an integrated Information Kiosk housed within a complementary lightweight structure.

The **Hub Building** is located in the central plaza area at the heart of the new Urban Park. The flexible footprint could offer the opportunity to support local businesses with a potential Coffee Shop/Ice Cream Kiosk offering light refreshments.

A number of **Lightweight Canopy Structures** are located at key nodal points within the Urban Park, offering shelter, informal social



and seating areas, with opportunities for integrated PV panels for solar energy collection.

The **Amphitheatre** offers a flexible external events space, with an integrated lightweight canopy structure which ties in with the sculptural roof forms of the wider Masterplan. This structure incorporates accessible facilities in close proximity to accessible parking.

The conceptual Masterplan encourages a common architectural language applied across all development opportunities within the wider Parkland area, creating a cohesive scheme that has been considered and designed as a whole. A palette of durable and sustainable natural materials will be considered, with the use of locally sourced timber species native to Aberdeen, where appropriate.



Architectural Development Opportunities

### 2.1.1 (1) New Play Park: Urban Park, Sports Area & Pump Track;

The proposed Urban Park is a tremendous opportunity to create an outdoor destination for the city in a unique context. The Urban Park is part of the wider landscape Masterplan that glues together many of the proposed and existing buildings and uses in the area, and importantly facilitates connections back to the CityCentre.

The potential of this Beachfront Urban Park will not only be on a city and regional level but should also be seen as distinctive in a national and international context.

The Urban Park can be seen in several ways, perhaps as a gift to the city and from the city in equal parts. Hence, its perception as a public park for all is a key aspect of the overall process.

Successful public parks from around the world, are by their very nature invariably designed with the public. The exercise of mutual understanding and design is in fact the start of the actual project. There has been initial consultation with various youth groups to date, and this needs to continue, and wider public consultation needs to happen. Out of this process a truly rich and varied design can be developed, full of 'indigenous' character, working with the inherent natural characteristics of the site and the aspirations of the people of Aberdeen.

A public park must be accessible for everyone, such is the egalitarian existence of true public spaces. The richness of the park will come in its form and uses. Play and games are an obvious part of this mix and creating the physical environment for this to flourish is key. The whole park should be seen as incorporating elements of play opportunity, with areas that are more focused and defined along with the more natural and incidental play integrated throughout the park. To ensure this engagement with the youth groups of Aberdeen needs to continue.

There are many other uses to be considered, and careful analysis of what is best is important as flexibility will be key in the evolution of a public park along with its functionality and flexibility to cater for yet unforeseen city uses. Being considerate not to over prescribe space is a restraint that needs to be exercised. Let people evolve with the structure of a good space – that is what will make it a place to be proud of and allow for the citizens of the city to take ownership.



Concept Visualisation of Urban Park





Concept rendered masterplan of Urban Park

## Arrival Squares

The arrival squares are a series of smaller hard landscape spaces within the park. These have been typically located at key arrival or nodal points within the site. These spaces will provide areas to meet, park a bicycle, take shelter, have a game of chess or sit and relax. They are of a scale which would also allow them to accommodate smaller events, markets or food trucks etc. helping to animate these spaces. They should be locations which assist legibility and way-finding within the park, either through unique identities and landmarks or the inclusion of way-finding information. The provision of power, water and data within these spaces should be considered.



## BEACH BOULEVARD ARRIVAL

This space will provide a welcome point and main arrival into the park from Beach Boulevard. A Gateway building, described in more detail elsewhere within this document, will act as a sculptural landmark at the entrance to the Queens Links, offering an enhanced sense of arrival at the Gateway to the Beachfront and providing facilities including Accessible/Toilet/Changing facilities.



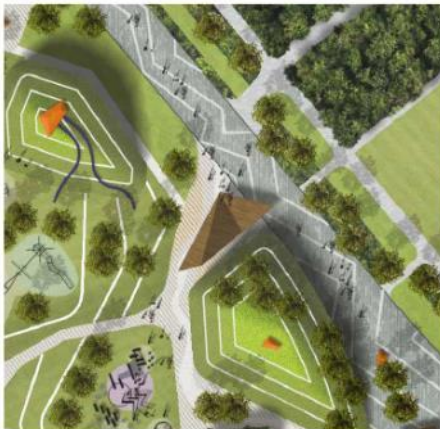
## AMUSEMENTS SQUARE

This space will provide a welcome point into the park from the promenade and adjacent arcades. It will also act as a key pick up/drop off point for the Park.



## PLAY GATEWAY

This space will provide a main gateway into the play area off the main route through the park. It will create a place to meet and explore the park from and will include opportunities for shelter.



## TRAMWAY SQUARE

This space will create an arrival into the park from Unquhart Road. At its southern end it incorporates an element of the existing tram lines which could be incorporated into this space to create character and a link to the history of the site. At its northern end this space could also form a connection to Transition Extreme Sports. At its eastern edge this space has a direct relationship with the events field which would allow these two spaces to be used in conjunction with each other for larger events.



## AMPHITHEATRE SQUARE

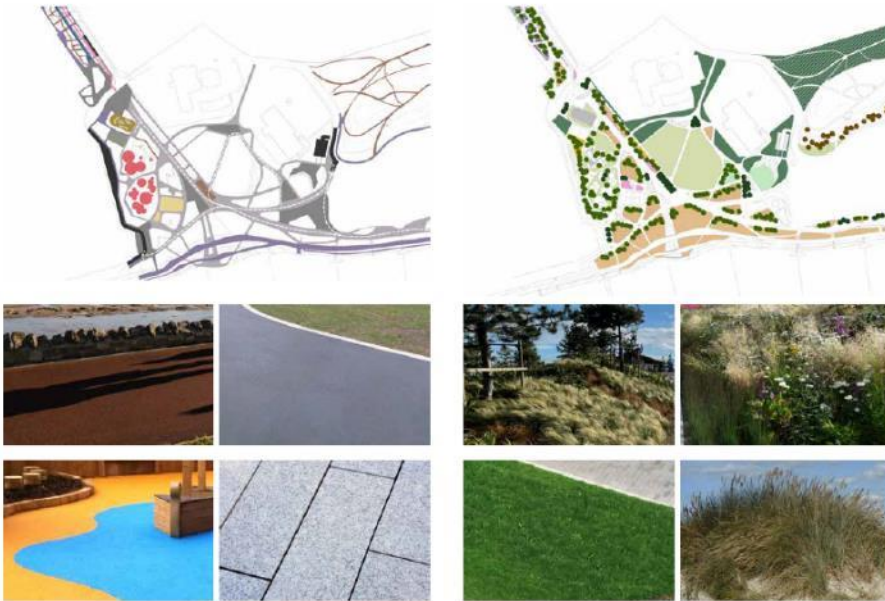
This space adjoins the naturally sheltered and sunken space of the amphitheatre, working with the distinct topography of the area. The space provides an arrival at the Beach Ballroom and a space to meet and linger off the main pedestrian thoroughfare.





## Hard and soft landscaping

The hard and soft landscape materials selected for the new urban park areas will be important as these will help to create legibility, character, ensure suitable accessibility, provide appropriate safety surfacing and ensure maintenance is easily undertaken.



### Hard: (left)

A relatively simple palette of hard landscape materials is being developed which will be robust, durable and easy to maintain.

### Soft: (right)

General typologies of planting are being developed across the park. These will aim to enhance ecology, provide shelter and structure, provide seasonal colour and interest and to create movement and animation within the park.

## Street Furniture

A palette of street furniture will be developed which helps provide cohesiveness to the park and provides opportunities for sitting in different configurations and social groupings.





## Water Features

Water features are being explored as part of the park proposals due to their ability to bring drama and animation to a space, to become a destination and meeting point and for their play value. The indicative locations for water features are illustrated below. Indicatively each of these water features would have a different character and attraction.



Rendered concept masterplan highlighting water elements

## New sports areas:

Although this area has been termed the play and games zone it is not intended that opportunities for play will be constrained to this area of the site. The intention is that informal play opportunities will be present through out the park. Equally the intention is that this area is a fully integrated part of the park landscape and is permeable and able to be explored as part of a visit to the park. The play park has been enclosed to some degree by landform/tree planting in order to help create a suitable micro-climate and provide a comfortable year round space. Equally the aim has been to provide some shelter from the wind which is particularly important for games such as table tennis and volley ball. A structure for the play and games zone has being developed which can accommodate a variety of play. At this point the content of the play parks is still being developed however approximate areas have been set aside for separate younger and older children's play areas. Recently undertaken consultation with children and young people is helping to inform this process and refine the types of play which should be included within these areas. Other uses with a larger footprint have been included within the development of the plan to ensure space is allowed for these uses within the plan, these included a pump track/skate park, a basketball court and volleyball courts all of which were raised during youth engagement. Other smaller uses have been indicated on the plan such as chess tables, table tennis tables etc. the final location of these elements is more flexible due to their smaller size.



Concept Masterplan: Sports Areas

Legend

1. Pump track/skate park (total area illustrated 1,190m<sup>2</sup>)
2. Basketball Court
3. Lookout dune with slides
4. Low seating/parkour walls
5. Seating
6. Older children/youth play area (total area illustrated 2,620 m<sup>2</sup>)
7. Small children's play area (total area illustrated 2,770 m<sup>2</sup>)
8. Shelter
9. Volley ball sand pit
10. Climbing boulder sand pit
11. Table tennis
12. Chess tables
13. Spinning boulder
14. Lookout binoculars

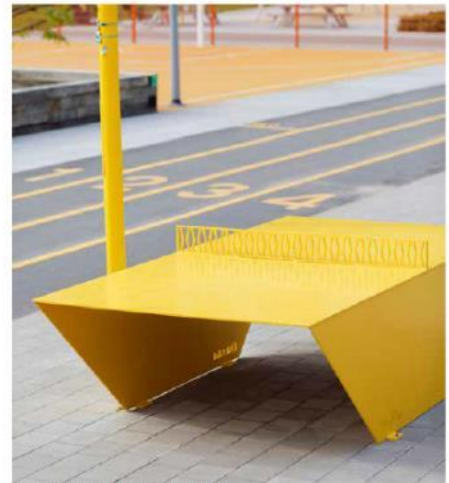


## PLAY PRECEDENTS

The content of the play parks is still being developed however a recently undertaken consultation with children and young people is helping to inform this process and refine the types of play which should be included within these areas.



Photograph by Göran Ekeberg, Adlight AB.  
(Image courtesy of Karavan landskapsarkiter)



Photograph by Göran Ekeberg, Adlight AB.  
(Image courtesy of Karavan landskapsarkiter)



## Pump Track

The desire for a bike, skate or pump track within the park was one element which emerged strongly from the engagement with Children and Young People.

At their best, pump tracks can be incredibly inclusive play elements which can be used by all ages and abilities. They can be used by many different types of equipment including scooters, roller blades, roller skates, skate boards, bicycles of all types and wheel chairs. They can help build a vibrant community, encourage social interaction and build respect for others. They can provide a valuable source of exercise and can be a gateway into other sports such as bmx or mountain biking. Having this as a free to use element within the park could be a valuable resource for the community.

The design of this element should be undertaken by a specialist company to ensure the design is both accessible to all, where a toddler supervised by an adult could roll around, a visitor in a wheelchair could get around, and that also has collections of features which are engaging to more experienced users.



A pump track is usable by many sports and can help build communities and encourage social interaction.

## 2.1.2:

### New amphitheatre

Within the Urban Park the opportunity to create a more intimate outdoor venue, suitable for music, theatre, outdoor cinema or screenings is provided with the creation of a small external amphitheatre located adjacent to the existing Beach Ballroom. The proposed Amphitheatre is supported with a lightweight angular canopy structure, tying in with the sculptural roof forms of the wider Masterplan, providing an element of shelter to the seating area and simultaneously offering opportunity for localised accessible toilet facilities adjacent to the accessible parking on the West part of the site.

Taking advantage of the existing site topography/ levels, the location for the Amphitheatre naturally shields the adjacent buildings to the West, whilst the orientation of this space provides natural screening and acoustic benefits which can be enhanced with strategic planting to provide an additional level of privacy to the space. The vision for this space is to create a flexible, intimate external events space with the potential to tie in with larger events hosted within the Urban Park.



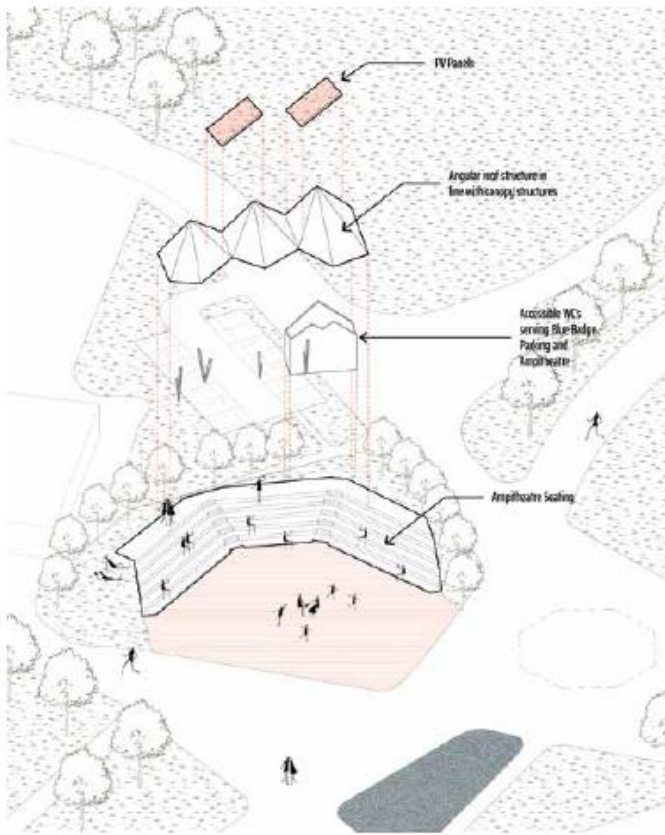
Location Plan



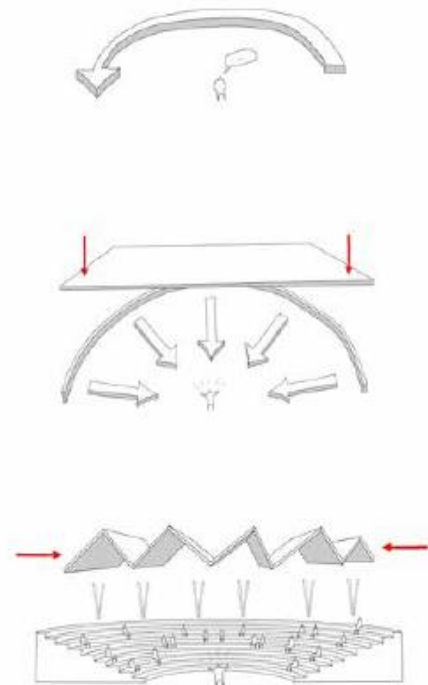
Concept 3D View



Key Plan

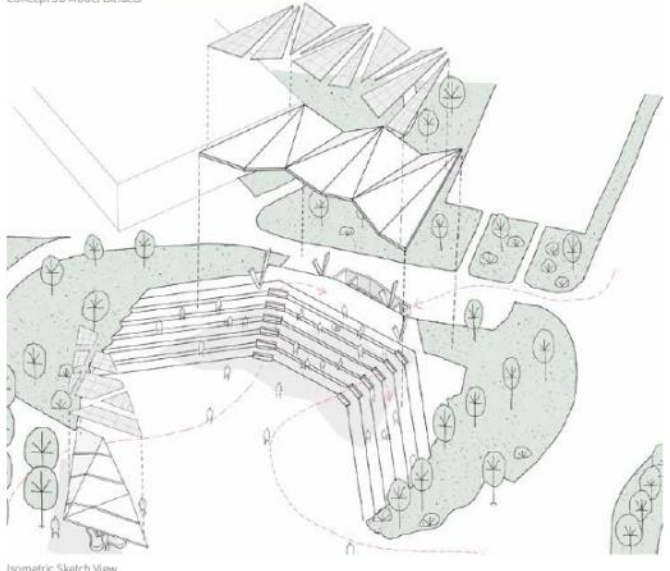
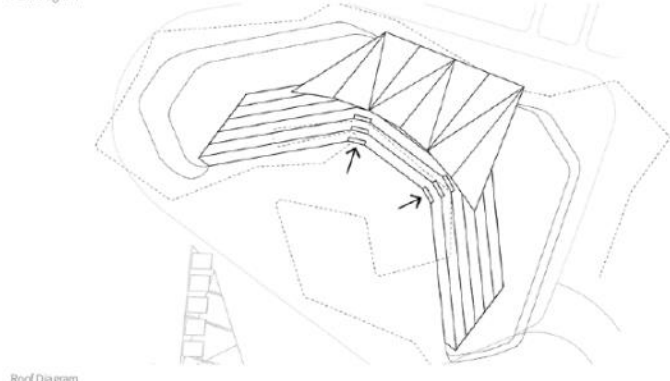
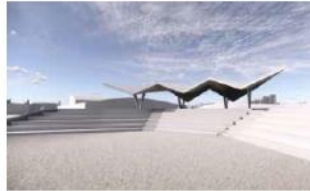
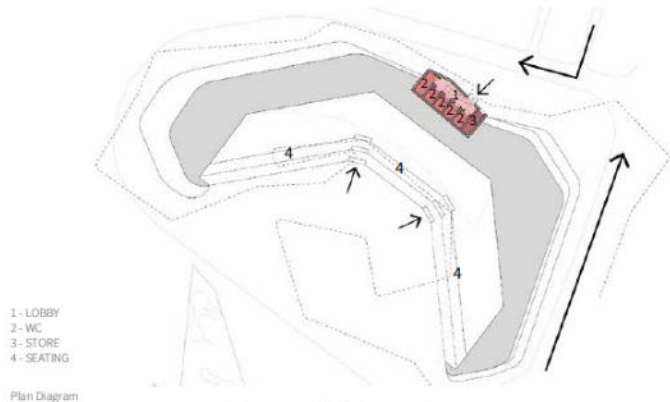


Concept Isometric View



Concept Diagram

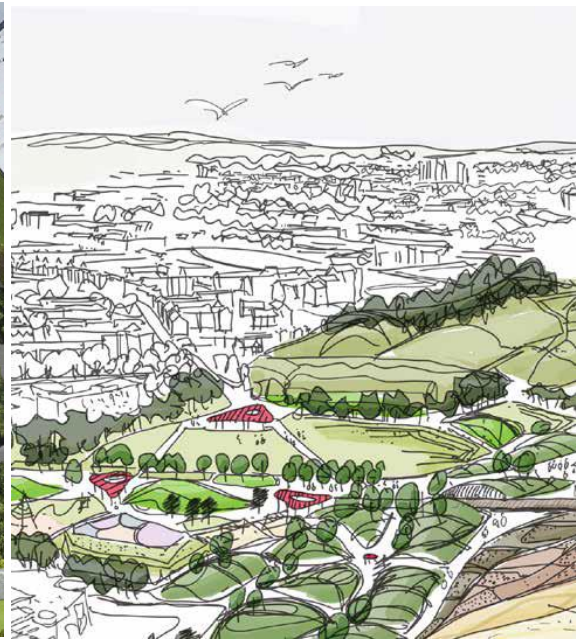




## Event Field

The events field has been designed as a flexible space capable of holding events, festivals, larger concerts etc. but also to provide a large grassed area for day to day use including informal sports and games such as football, touch rugby, ultimate frisbee, and passive recreation such as picnicking.

The field covers an area of circa 8,800m<sup>2</sup> however additional space is also provided by the adjacent hard landscaped public spaces.



## CONCERT

## FIREWORKS

## CHRISTMAS MARKET

The below plan illustrates a possible arrangement of a larger concert/festival within the park.

The below plan illustrates a possible arrangement of a fireworks event within the park.

The below plan illustrates a possible arrangement of a large Christmas market within the park.





## Gateway Building

The Gateway Building acts as a sculptural landmark at the entrance to the Urban Park, offering an enhanced sense of arrival at the Gateway to the Beachfront. The flexible building footprint is set within a complementary lightweight structure which spans across the main desire route, increasing visibility from Beach Boulevard and drawing people down towards the new waterfront destination from the City Centre approach.

An integrated Information Booth and Reception area is proposed to assist with orientation within the new Urban Park, with enhanced directional and digital signage. The Gateway proposal offers potential to explore more sculptural elements, feature lighting and opportunities for public art within the design, adding the wow factor upon arrival to the Beachfront.

Accessible/Toilet/Changing facilities will be housed within the proposed structure which will be clad in durable, natural timber cladding, with an angular roof formation to echo the other lightweight architectural interventions within the wider Park. The height of the Gateway canopy will be designed to accommodate vehicular access onto a shared surface if required for managed events.



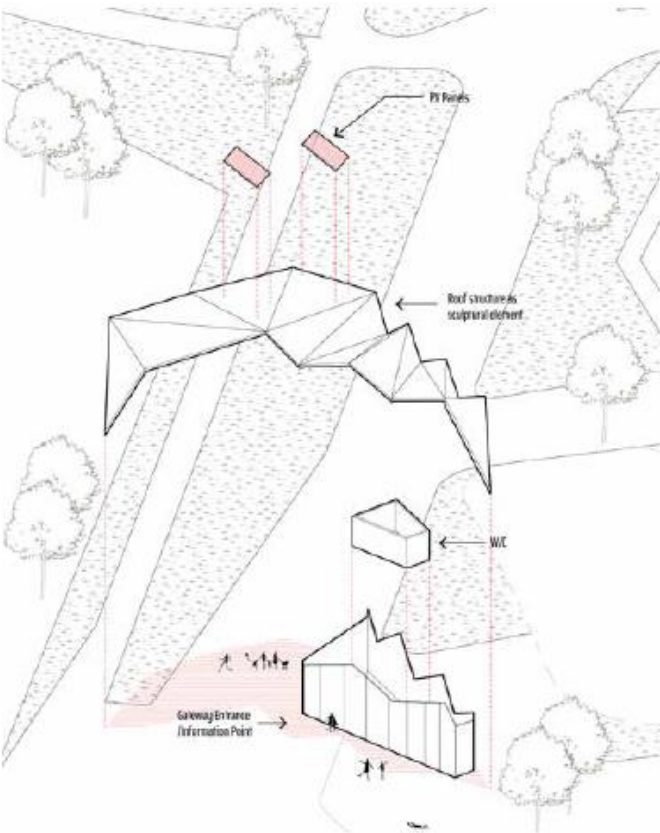
Location Plan



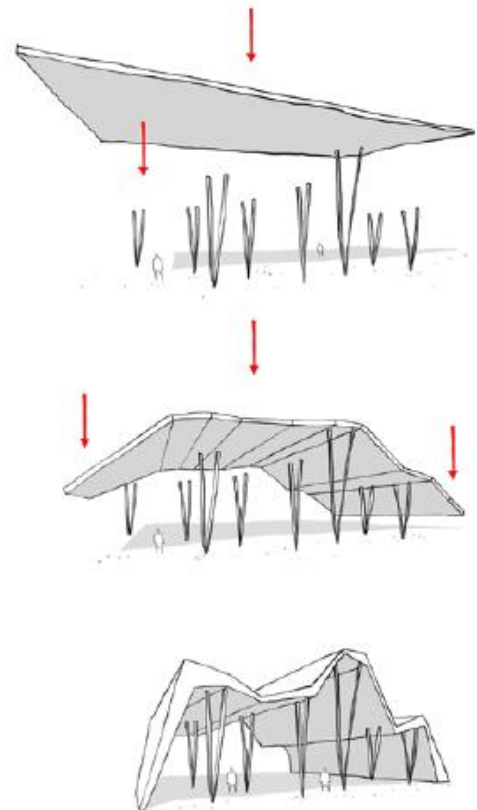
Concept 3D View



Key Plan



Concept Isometric View



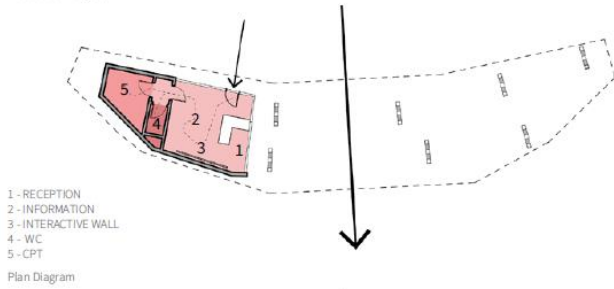
Concept Diagram



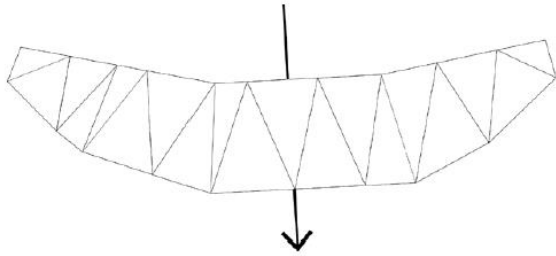
Precedent Imagery



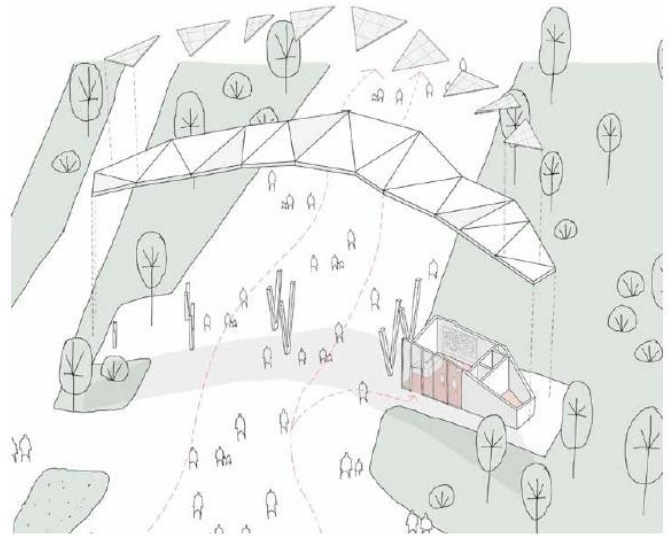
Concept 3D Model Extracts



Plan Diagram



Roof Diagram



Isometric Sketch View



# Hub Building

The Hub Building is located in the central plaza area, creating a focal point at the heart of the new Urban Park. Positioned at a key nodal point junction on the main Avenue, the building will capitalise on footfall sweeping down from Beach Boulevard, offering a place to pause, engage and refresh on the primary desire route. The flexible building footprint could support a variety of uses, with opportunity for Social Enterprise and supporting local business with a potential Coffee Shop/Ice Cream Kiosk offering light refreshments. Toilet and Changing facilities would be provided including centrally located accessible facilities/CPT. The proposed Hub will incorporate a sculptural angular roof structure, aligned with the wider family of lightweight structures located throughout the Urban Park.



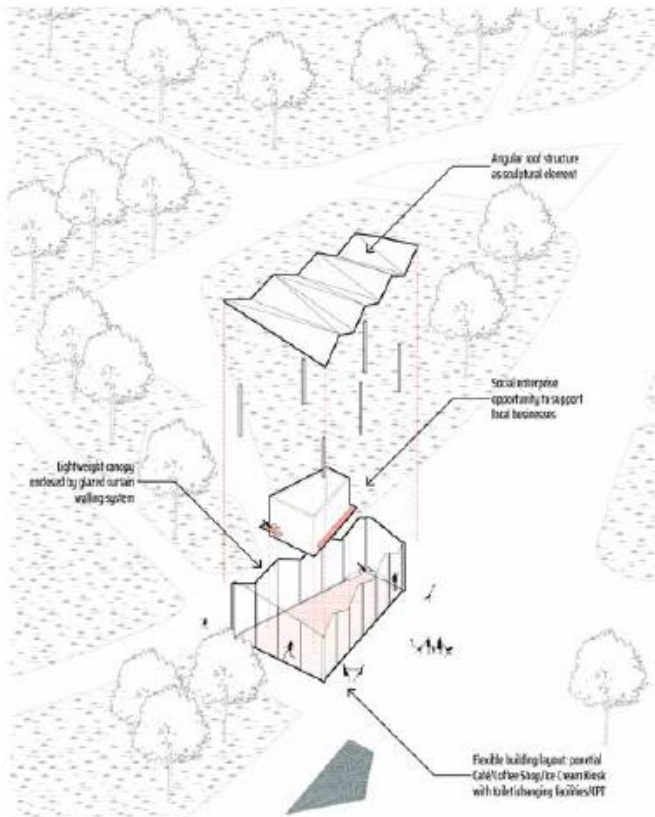
Location Plan



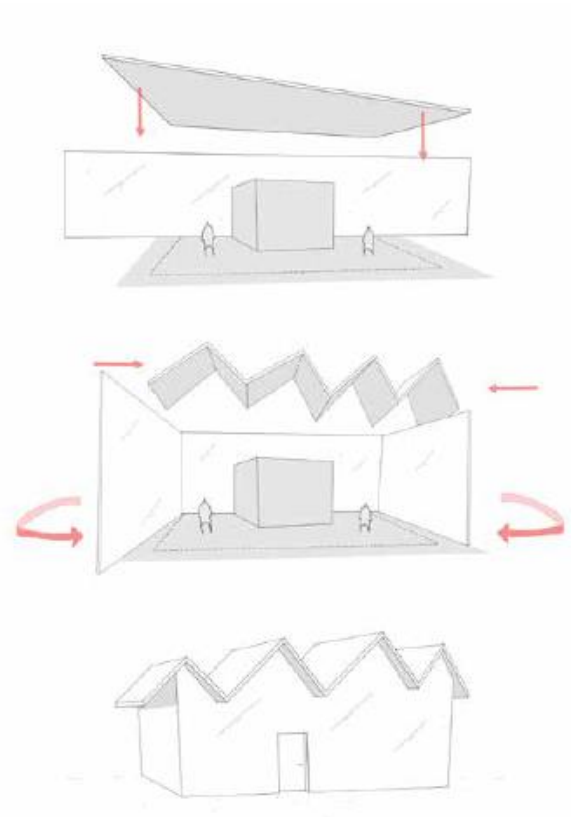
Concept 3D View



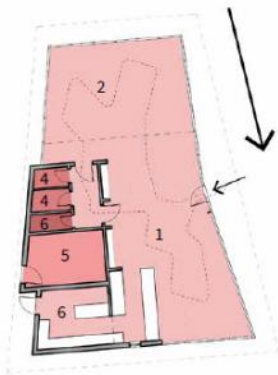
Key Plan



Concept Isometric View

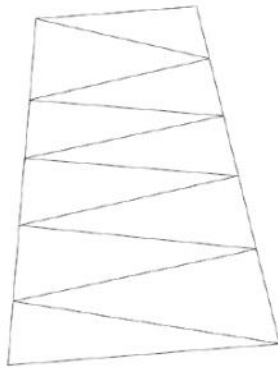


Concept Diagram



- 1 - CAFE
- 2 - FLEXIBLE SPACE
- 3 - BOH
- 4 - WC
- 5 - CPT
- 6 - STORE

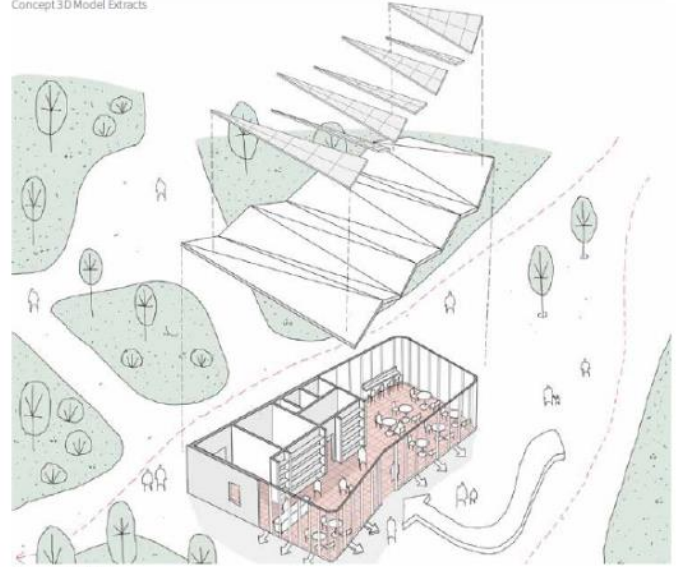
Plan Diagram



Roof Diagram



Concept 3D Model Extracts



Isometric Sketch View



## New Canopy Features

A number of canopy structures are proposed at key nodal points within the Urban Park to aid orientation on the Beachfront journey. The angular roof structures proposed will provide shelter from the elements and seating areas for rest and reflection. A variety of seating, including back and arm rests will be provided, as well as accessible spaces for wheelchair users. These flexible structures offer opportunity for social/meeting points, picnic areas, recycling points, individual seating and quiet areas.

Feature structural columns are proposed as sculptural elements, supporting an angular roof form with opportunities for integrated PV panels to provide solar energy to potentially illuminate the public realm areas, with feature up-lighting of the canopy forms. Durable, locally sourced, sustainable materials have been suggested, creating a family of structures which follow a common architectural language and materiality to tie through with wider Masterplan interventions.



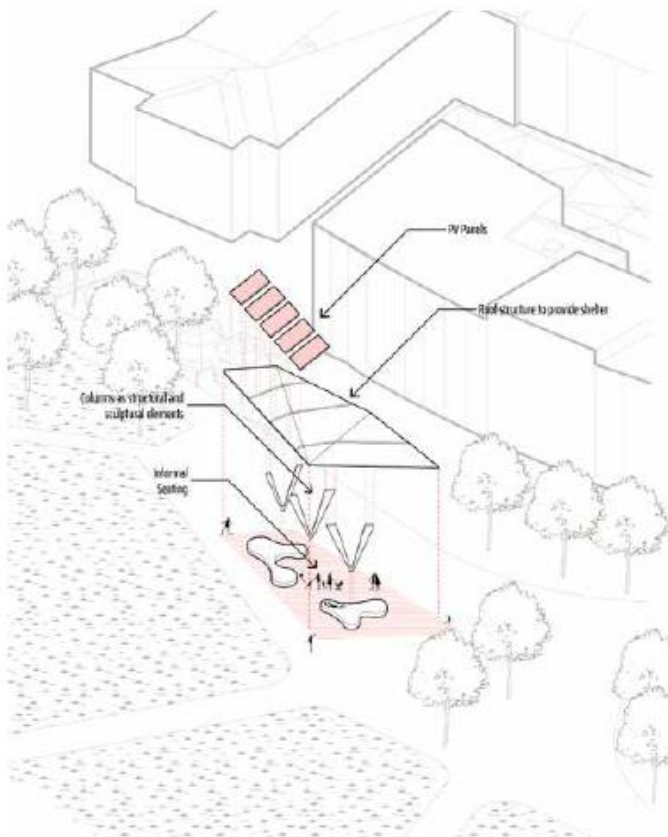
Location Plan



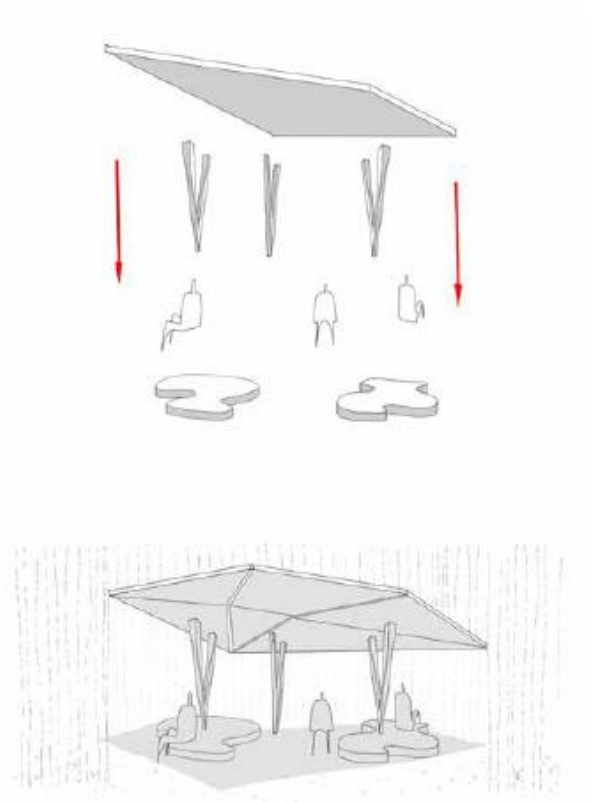
Concept 3D View



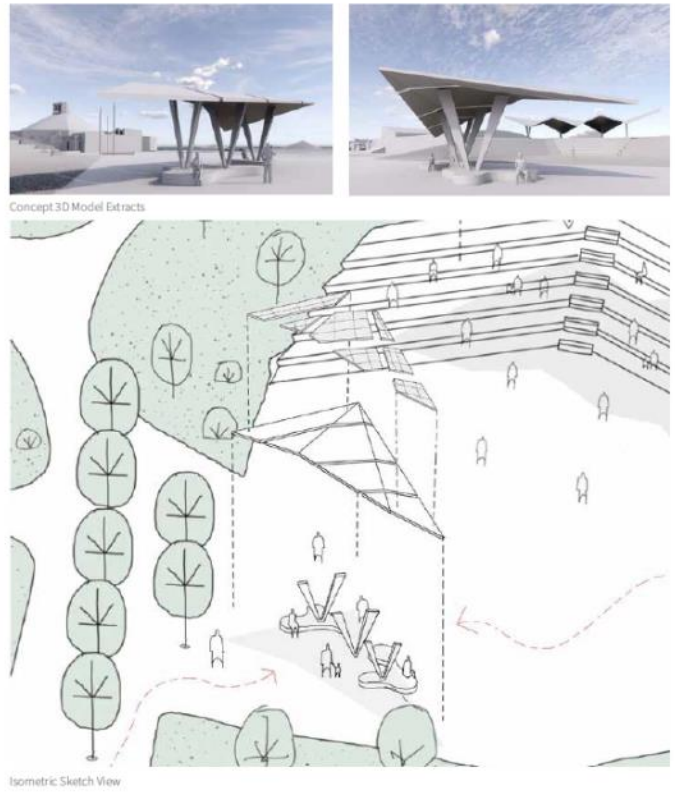
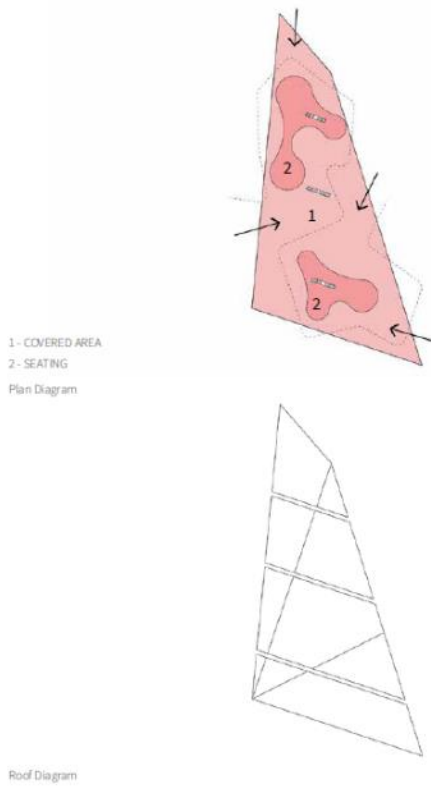
Key Plan



Concept Isometric View



Concept Diagram



### 2.1.3 Landscaping: Landscape Mounding;

A key aim of proposed landscape mounding features is to create shelter and help improve the microclimate of spaces across the site, increasing the comfort of visitors and increasing dwell time. These mound features will also help to define and enclose spaces within the park, creating 'rooms' of different sizes which can accommodate the various programs of use. The landforms will be carefully sited to frame and create views. This could be creating choreographed views to the sea from the esplanade level in the park or setting up vistas to sculptures or interventions within the park. Through revealing and blocking views the mounds will also provide increased opportunities for exploration and discovery within the park. Some of the landforms may be developed to contribute directly to the play value of the site, this may vary from informal elements such as mounds to run up and roll down or more formal elements such as the incorporation of slides or viewing points.



Play can be incorporated into the landscape mounds.



The landscape mounds can help create dramatic views to the sea.



Informal play opportunities are provided by landforms.



The landscape mounds can incorporate viewing points.



## 2.1.4 Broadhill: Public Realm & Landscaping;

A relatively light touch of intervention is proposed for Broad Hill. This could include the improvement of the existing path network, additional tree/scrub planting and up to two new viewpoints/sculptural interventions taking advantage of the expansive views available and providing opportunities for seating and interpretation.



Precedent of viewing opportunities



Existing path condition varies on Broad Hill



Precedent of seating at viewpoints



Existing views from Broad Hill



Precedent structures



## Broadhill Structures

2 no. geometric viewing platform structures are proposed on Broadhill, taking advantage of spectacular panoramic views across the Beachfront. The indicative material palette explored consists of a concrete base slab structure with integrated timber seating areas to pause, rest and reflect along the popular walking route.

To coincide with other Masterplan interventions and create a common aesthetic throughout the Urban Park, proposed timber finishes will be locally sourced Scottish larch, suitable for a marine environment. To offer shelter from the elements, integrated timber canopy structures are also proposed.

Informative directional signage and/or sculptures pointing to specific landmarks are proposed, with accompanying observational stand binoculars. There are also opportunities for public art installations in collaboration with local artists, potentially being integrated within the hexagonal concrete structures, subject to artist's detail design.



Materiality



Canopy Shelter Concept



Key Plan



Location Plan

## 2.1.5 Reconfigured Beach Landscaping

The intention at the beachfront is to modify the beach edge, pulling this back into the site and creating better visual and physical connectivity between the park and the sea. Behind this modified edge, dune landforms will help provide shelter to the park and will frame views out to sea. The modification of the landform in this area, due to the removal of the road, will play a key role in heightening the relationship between the beach, the park and the City. It is important that the humanising of this interface is a priority, while Maintaining the necessary coastal defences by investigating more natural flood Defence systems which can afford to utilise a greater area therefore introducing a Distinctive and unique environment. One of the out turn aims will be making the Beach bigger and more accessible. Proposals in this area are being developed in partnership /consultation with ACC Operations / Coastal / Flooding Teams.





A new arrival at the beach

## Interventions / Upgrades Along Beach

### Intermediate works

The following sets out proposed interventions at the Promenade/Esplanade at Aberdeen Beachfront which were identified in the November Committee Report and identifies progress on these items where appropriate.

The items were organised under the following headings:

- 1 – Immediate (i.e. action between Nov – Feb CGR Committee, reporting back to Feb CGR on progress)
- 2 – Short Term (i.e. report back to Feb CGR Committee with indicative brief/designs/costs)
- 3 – Medium Term (i.e. part of wider Masterplan design activities / may require longer term input from design team/consultants/user groups etc)

### 1 - Immediate

Repair/upgrade (tie in with C&YP Engagement where possible)

- The need for improved maintenance and cleanliness (new bins / tie in with feedback from C&YP consultation)
- Inspect and repair historical handrails (weather dependant).
- Repair and replace stairwells at shelter / toilet locations.
- Installation of safety signage to notify why stairwells leading to the beach are closed off
- Tidy up of some grass banks but retain natural feel.
- Clean and repair street furniture, bins benches etc.
- Clean and replace existing signage as required.
- Tidy up of existing shrubs and landscaped areas.

### Progress:

- Beach front general tidy up including landscaped areas - Work has started and will continue through February / March.
- Big belly bins to replace traditional bins, order complete and being installed from 31/1/2022.
- Replace 20no. Traditional litter bins with new broxap bins. Orders to be issued February.

- Beach shelter steps. Survey, design, checks, approved and procurement for new steps and rails undertaken. To start on site early 2022 together with resurfacing works.
- Seated area (1) steps. Survey, design, checks, approved and procurement for new steps and rails. Work has started on site.
- Seated area (2) steps. Survey, design, checks, approved and procurement for new steps and rails. Work has started on site.
- New benches to replace existing. Standard theme along beach front. Quotes received.
- Replace all public rescue equipment and casings. Orders to be issued February.
- Renew and refresh planting at Beach Ballroom roundabout. Team on site wc 31st February to review site and prepare plant order.

## 2 - Short Term

### Repair/upgrade suggestions

- Repaint historical handrails (weather dependant)
- Renovate Fittie public toilet block (potential conversion to Surf Club clubhouse with potential alternative toilet facilities)
- Treat rust and repaint stairwell handrails on from upper footpath to lower footpath (weather dependant)
- Repointing to granite walls
- Repairs to subsiding stairwells
- Additional signage including signage to connect the beach and city centre
- Resurfacing of poorly damaged footpaths and seating areas
- Repairs to granite cobbles at roadside
- Repairs to road surface, potholes etc.
- Remarking pedestrian crossings, road markings, parking bays, and sleeping policemen
- Installation of retaining walls as required at specific locations to protect erosion of banks and provide seating (Lower Esplanade, to bottom of grass banks)
- Install standing tables or picnic benches or relocate Union Street parklets [potential crossover with Spaces for People workstream]
- Information and recognition of beach and water users. Aberdeen`s outdoor swimming groups, surfing groups etc
- Upgrade existing Queens Links playpark
- Additional/improved accessibility opportunities

Ideas/points of interest/Interpretation Points (May become Short Term – potential tie in with Gray’s School or Art project

- Reference and information to sighting Northern lights (QR codes) and viewing points
- Reference and information to dolphin watching (QR codes)
- Reference to maritime museum and other local attractions (QR codes)
- Information on cold water swimming, the benefits tempered with health and safety (QR codes)
- Interpretation Points could also be included at Broad Hill

Ideas/points of interest/Interpretation Points.

- Aberdeen’s fishing history, Aberdeen’s relationship with oil and gas, Aberdeen’s relationship with renewable energy, what’s next for Aberdeen
- Surfboards planted on their ends to provide outside changing space for beach users and water enthusiasts.
- Additional bike stations, repairs tool kits. (Cycle hub days where local business mechanics have set times to teach cyclists basic repairs).



- Water bottle stations (potential Scottish Water engagement)
- Additional lighting on lower Esplanade.
- Clubhouse for recognised clubs and users, changing rooms, showers
- Other areas for consideration
- Working with local artists (street art / tunnels / sculpture)
- Working in conjunction with RGU for young architects
- Working in conjunction with the clubs who heavily use the beach
- Ideas around visitor attractions

**Progress:**

- Exterior drench showers x 4 at central toilets. Orders to be issued February 2022.
- Improvements to the area beside the central toilets – repair and paint wall and commission new Mural. Estimate. Work ongoing.
- Central toilet redecoration. Renew plumbing etc. Orders to be issued February 2022.
- Patching of poor surface areas lower promenade. Work complete.
- Replacement of 230m of boardwalk with new low level timber boardwalk with anti-slip strips. Quotes received.
- Seated area resurfacing. April/May 2022 start.

**3 – Medium Term**

Ideas/points of interest

- Creation of a cycleway along the back of the road
- Creation of a bay for a multitude of water sports inc Pier/Boardwalk
- Options for relocating the cricket pitch

**Progress:**

Design options in relation to these items are continuing to be developed.

# CONCEPT MASTERPLAN VISUALISATIONS



Gateway entrance looking east



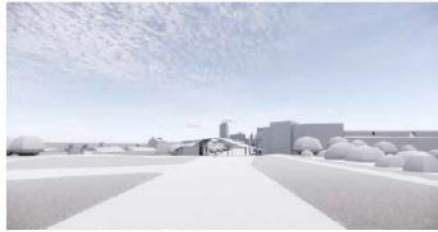
Gateway entrance looking east



Beach Boulevard looking east



Beach Boulevard looking south-east towards urban sports area



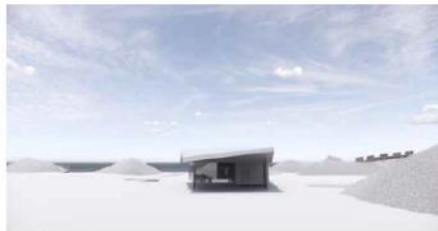
Beach Boulevard looking west back to city



Lightweight canopy near urban sports area looking south-east



Lightweight canopy near urban sports area looking north



Hub looking east



Internal hub looking north-east towards sea and beach ballroom



Improved beach landscaping looking north



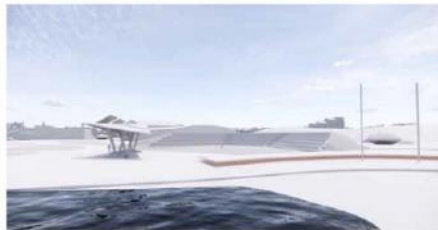
Improved beach landscaping looking south



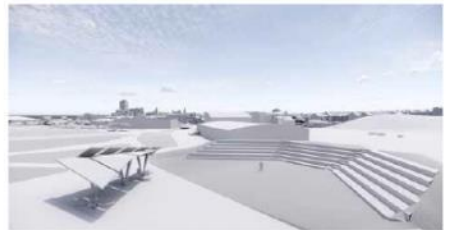
Beach Ballroom looking west



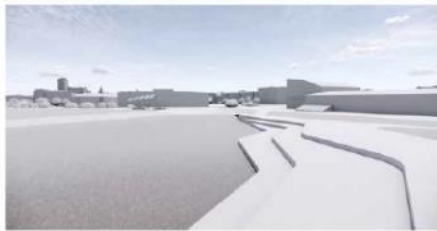
Beach Ballroom looking west towards amphitheatre



Beach Ballroom looking west towards amphitheatre



Amphitheatre looking west towards city



Events field looking west



Events field looking north



Aerial of events field looking north-east towards Beach Ballroom



## 5. Community Involvement and Engagement

### 5.2 Engagement to Date

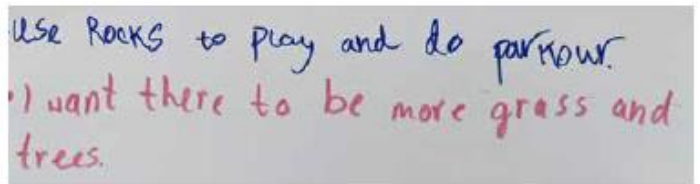
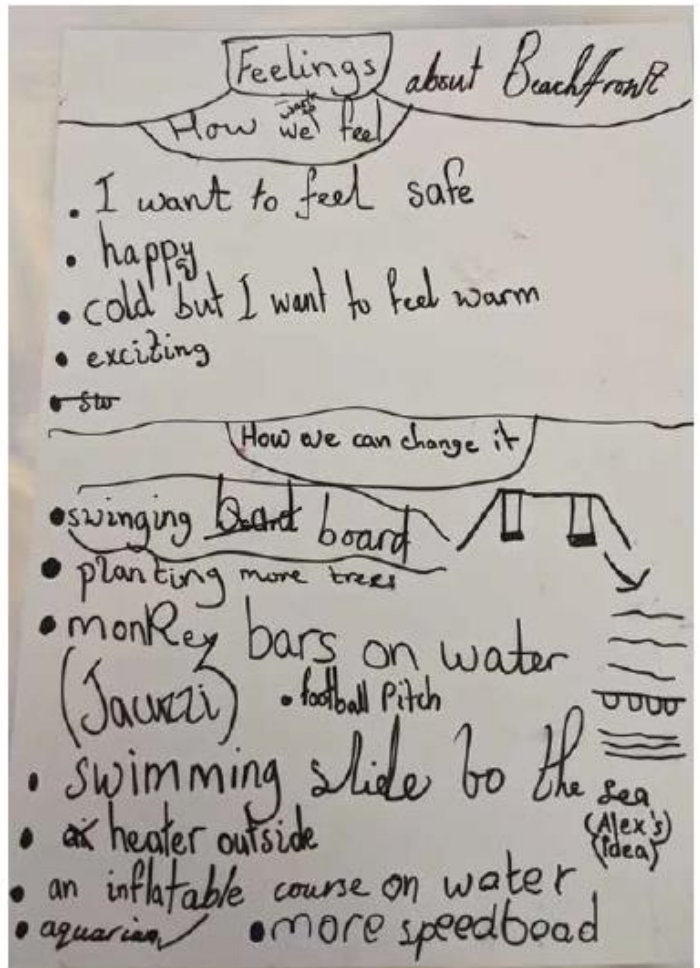
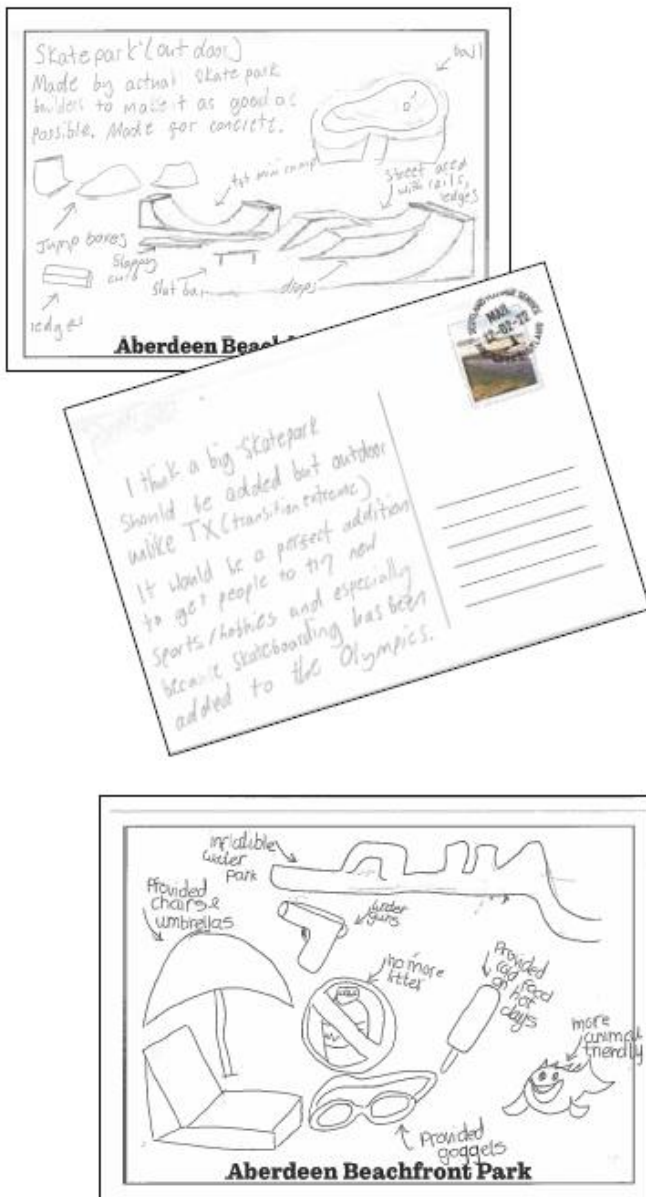
#### Children and young People

The consultation and engagement undertaken with children and young people to date for the Beach Masterplan has comprised of the following:

Workshops with P6 Primary School children, followed by a presentation of their ideas to members of the design team.

A 'creative postcard exercise' undertaken with secondary school students.

Consultation through a QR code and online survey.





The images shown on these two pages illustrate some of the ideas and comments received.

### Feedback to Children and young People

As the designs for the Beach Masterplan are progressing, the feedback and ideas received from the Children and Young People engagement undertaken to date is helping to shape and refine the proposals. It is acknowledged however that this is not the end of the engagement process and that ongoing consultation is essential to successful delivery.

To continue this dialogue, a video has been produced which will be shared with the schools and youth groups who participated in the consultation, explaining how their ideas and suggestions have been influencing the emerging designs for the Beachfront.

In addition to this the following engagement is planned:

- Feedback calls to all the Primary 6 classes who took part in the classroom exercises in October – these are provisionally scheduled for the 23,24, and 25th February 2022.
- A 'postcard back' exercise to the high schools/youth groups/others invited to take part in the 'send a postcard exercise' – these replying postcards will include a QR code for the feedback video.
- More in-depth, geographically focused engagement with certain schools aimed to be undertaken on site. For the Beach the initial focus will be on Hanover Street, Seaton and St Peters school – subject to COVID guidelines. The hope is to speak to Senior Leadership Teams to explain our intention to establish a special relationship with these schools over the delivery of the project. The initial aim is to get 'on site' engagement before Easter.
- Further engagement with the other schools to see what existing groups are established and whether we can develop a Beach Ambassador network with pupils from schools across the city.
- Individual session to be held with Bucksburn ASN pupils on the Beach – aiming for April engagement.

### Feedback Video

The below film strip illustrates some of the stills taken from the feedback video produced. The video is 6.41 minutes long and includes a narration which explains how the ideas received from the Children and Young People Engagement has helped shape designs.

### **5.3 Proposed Further Engagement**

Council officers and the associated Beachfront design team acknowledge that the Concept Masterplan work and the development optioneering that has been undertaken to date for the Beachfront has moved at a significant pace since the initial reporting to the August City Growth and Resources Committee. This work to date, and the masterplan concepts and indicative development options that have subsequently emerged for consideration, have been directly influenced by the significant public engagement exercise undertaken between June-July 2021 on “The Future of Aberdeen City Centre and the Beach”, to which there were 7,697 responses , the largest response that the Council has received to any such consultation.

Regardless of the success and level of engagement to the Summer 2021 consultation, and while there has been recent engagement with Community Council stakeholders and Children and Young people in relation the Beach, it is acknowledged by Council officers and the associated Beachfront design team that significant future engagement with key stakeholders will be key to ensuring a successful project.

In the months ahead the Council and design team will undertake wider engagement with key stakeholders and end users of the Beachfront in order to have the discussions and ask the very questions which will make these projects the best they can be for all users of the Beach of the future. Subject to the necessary approvals in relation to the scope and design intent for the Beachfront at February Council, a series of engagement with key stakeholders, end users and the public is proposed throughout 2022, with an initial focus on the Beachfront Development Framework, the preparation of which has been agreed by the Council. Indeed, as outlined in the Indicative Planning Consent Programme provided in this report, a first draft Development Framework will be informed by stakeholder engagement during its preparation, all in advance of a wider public consultation exercise prior to any final approvals.



## 8. BEACH CITY CENTRE CONNECTIVITY

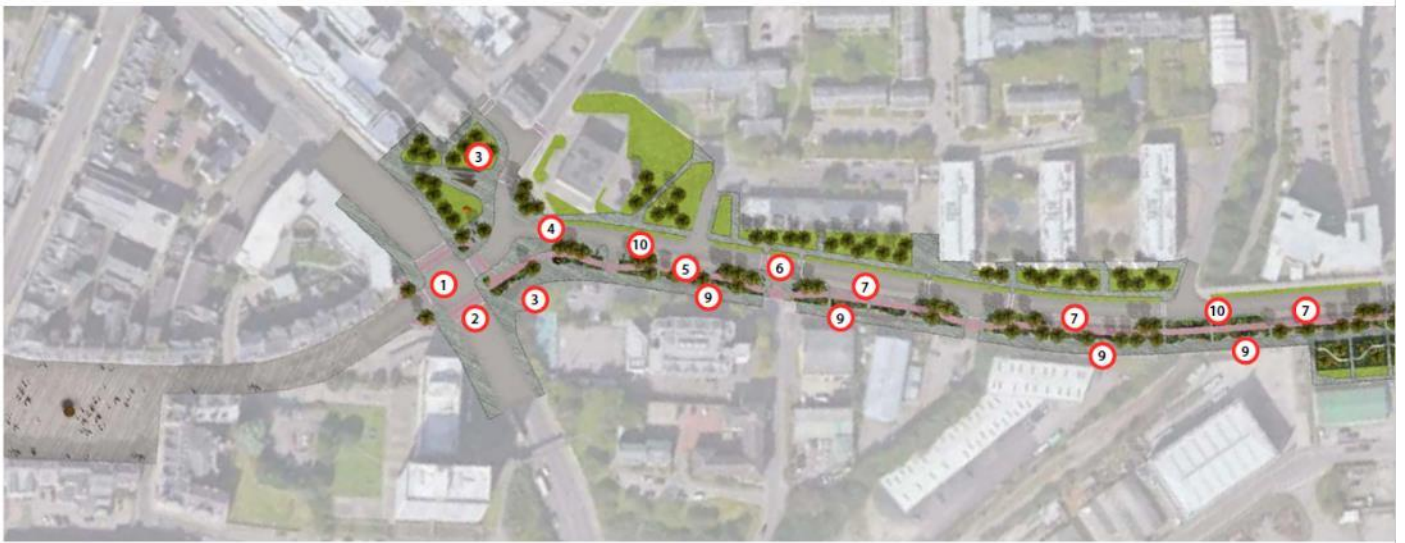
### City Connection

The interventions illustrated on Beach Boulevard and the alterations to the roundabout connection to Justice Street have still to be tested in relation to geometries and traffic modelling. The aim here however is to illustrate an aspiration for how these spaces could be transformed with the following aims:

- Increasing pedestrian and cycle connectivity between the City and the Beach
- Improving the appearance and experience of walking or cycling to the beach
- Improving legibility of the journey
- Providing a segregated cycle route
- Increasing soft landscape and biodiversity
- Accommodating SUDS

### Legend

1. New crossroad replacing roundabout
2. New direct crossing points
3. New public square
4. New junction onto Beach Boulevard
5. New segregated cycleway
6. Reduced carriageway
7. Parking
8. Community gardens
9. Seating opportunities and artwork/interventions creating interest on the trail from the city to the beach
10. Bus stop (locations tbc)





Active travel and new planting replacing existing road infrastructure, Glasgow.



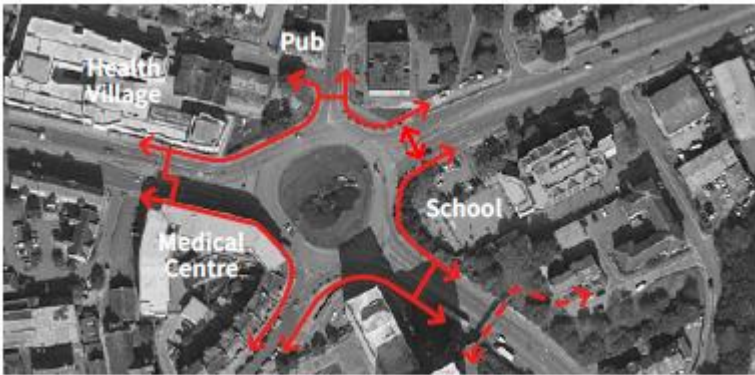
Active travel, new planting and artwork replacing existing road infrastructure, Sheffield. (Image courtesy of Sheffield City Council)



Active travel, new planting and seating replacing existing road infrastructure, Sheffield. (Image courtesy of Sheffield City Council)

**Roundabout**

The diagram below illustrates the current pedestrian crossing opportunities around the roundabout and highlights how the road infrastructure dominates how this part of the city is experienced.



Existing crossing points and adjacent uses.

Several different concept options have been investigated in order to determine how best to improve the connection from the City to the Beach. Of the options developed it is believed that an 'At Grade' solution has the potential to create the most effective solution.

The options illustrated opposite illustrate two different potential reconfigurations of the roundabout for further exploration. These concept options have not been tested in relation to geometries or traffic modelling however aim to illustrate an aspiration for how the roundabout could be transformed improving pedestrian and cycle connectivity,



extending the character of the City centre and creating a new into a new public space.



A potential new civic space, bringing the City centre closer to the Beach and by doing so, creating a direct pedestrian and cycle route onto Beach Boulevard.



Legend

1. New crossroad replacing roundabout
2. New direct pedestrian/cyclist crossing points
3. Cyclists rejoin carriageway on Justice Street
4. New public square
5. New junction onto Beach Boulevard
6. New segregated cycleway
7. Reduced carriageway
8. Parking
9. Seating opportunities
10. Artwork/interventions creating interest on the trail from the city to the beach



**Beach Boulevard**

The alterations to Beach Boulevard in relation to the reduction of carriageway width have still to be tested in relation to traffic modelling. The aim here however is to illustrate an aspiration for how carriageway space can be reallocated to pedestrians and cyclists and public realm, transforming the experience of going to the beach.



Legend

1. New segregated cycleway
2. Reduced carriageway
3. Parking
4. Seating opportunities
5. Artwork/interventions creating interest on the trail from the city to the beach
6. Side roads with continuous footways and pedestrian/cycle priority
7. Bus stop (locations tbc.)



A potential view of Beach Boulevard with a new segregated cycleway and soft landscape.

The section below illustrates the current space allocation along Beach Boulevard. The large majority of space is currently allocated to cars and does not contribute to a pleasant pedestrian or cycle environment.



The below shows an indicative section illustrating the what could be achieved where car parking was not provided along Beach Boulevard. This could provide space for bus stops, additional soft landscape or seating and cycle parking.





### Community gardens

At the bottom of Beach Boulevard the space widens. This could be an opportunity to create community gardens with a smaller, more intimate scale than within the main body of the park.

These gardens could include, sensory elements such as herb gardens, coloured light and sound features and promote use and enjoyment of the gardens by all. They could incorporate small elements of play and interaction. They could provide social seating arrangements and quieter areas to relax. They could include community growing and fruit trees.



### Legend

- 1. Aromatic garden
- 2. Sound garden
- 3. Light garden
- 4. Orchard garden





Sound and light within a community garden



Aromatic planting within a community garden



Social seating arrangements



Fruit trees in step over form



Intimate parklets created with a variety of colour, smell and sound



Social seating arrangements