

# SGC-H&S-Report-Visuals-V3

[View in Power BI](#) ↗

**Last data refresh:**  
02/11/2022 08:52:58 UTC

**Downloaded at:**  
02/11/2022 10:38:18 UTC



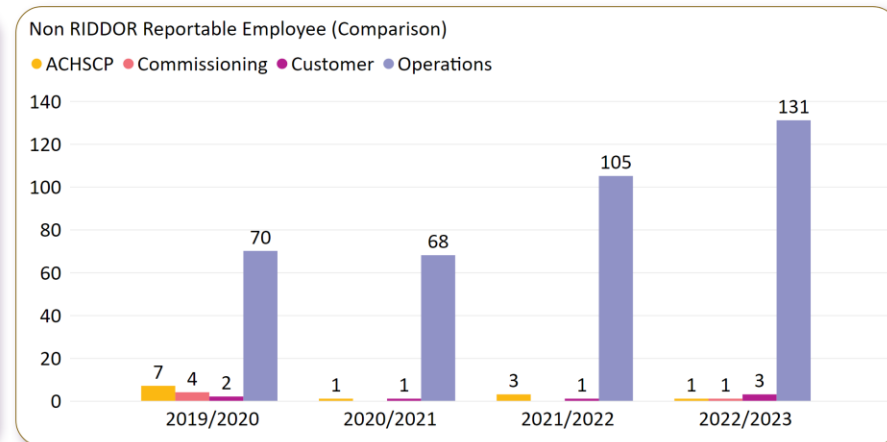
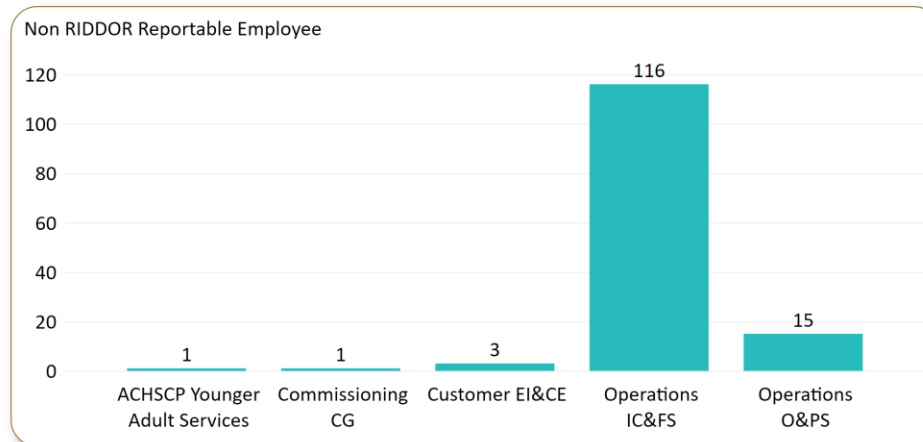
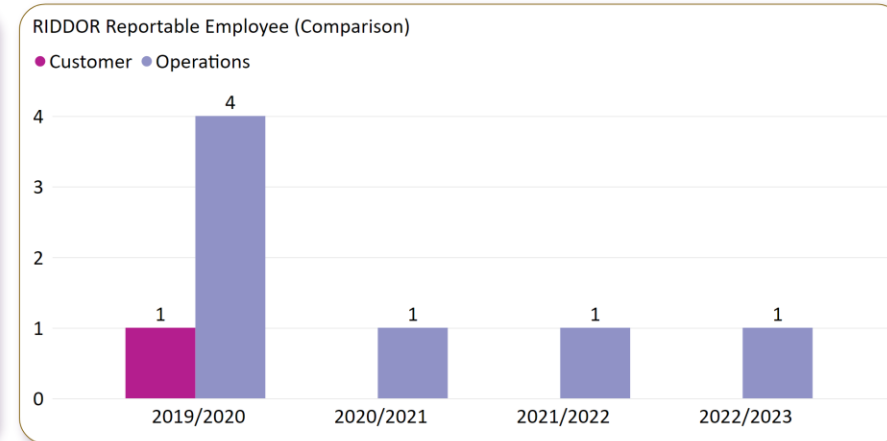
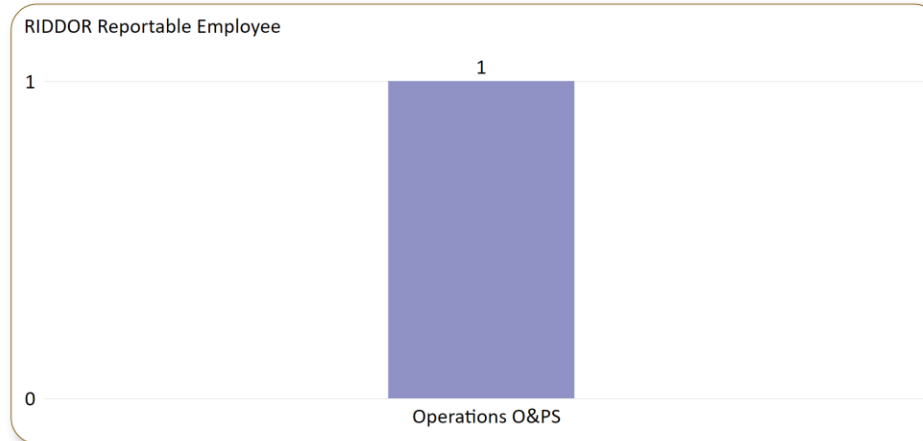
Date Last  
Refreshed:

19 October 2022

# Staff Governance Health & Safety Report Quarter 2 2022/2023 (Jul 22 to Sep 22)

## Reported H&S Incidents (Employee) Between Jul to Sep 2022

The following tables give breakdown of all employee incidents across all Functions and Clusters in Aberdeen City Council. The tables on the left initially show the number of incidents for each Cluster this reporting period with those on the right giving a quarter 2 comparison for each Function from 2019/20 to 2022/23.



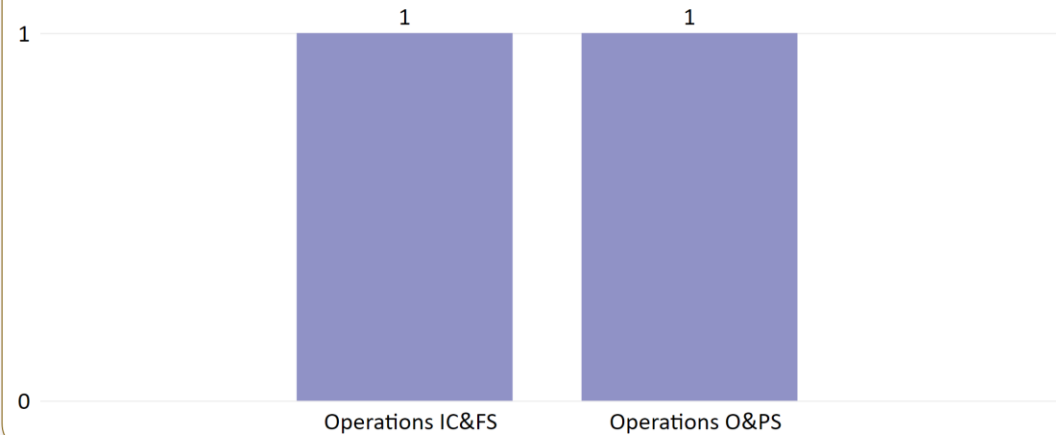
### Employee Incident Information

Education continues to provide the largest number of incidents mainly due to the distressed behaviours of children. Work continues within Education to both address the root causes of these behaviours and to reduce the risk of injury to staff as a result of these. Figures are slightly raised over the same period last year as Clusters return fully to face to face interaction with service users.

## Reported H&S Incidents (Third Party) Between Jul to Sep 2022

The tables below give information on those non-employee incidents which happened across all Functions and Clusters. Again the tables on the left show the current period for each Cluster, with those on the right giving a quarter 2 comparison for each function from 2019/20 to 2022/23.

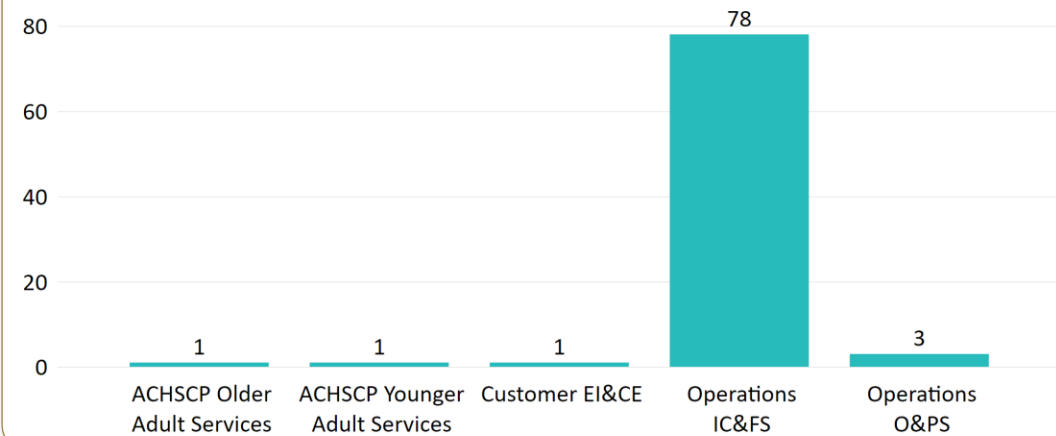
RIDDOR Reportable Non Employee



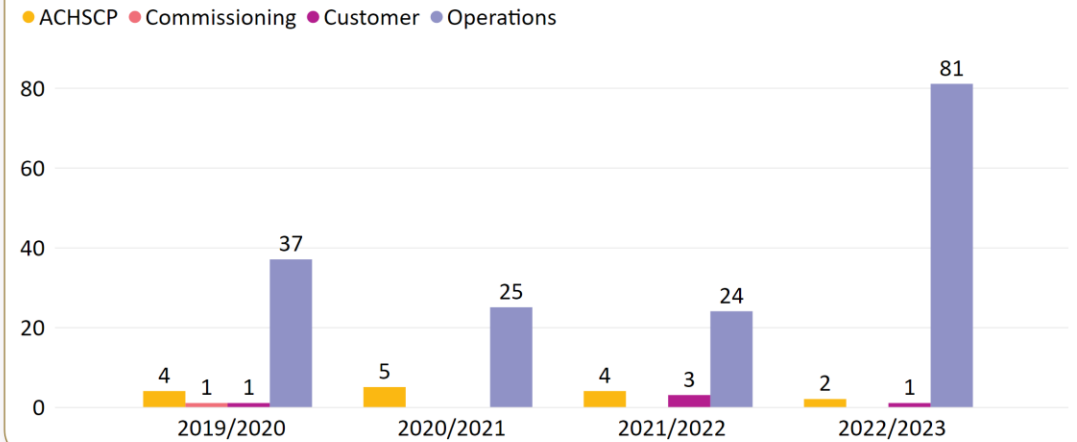
RIDDOR Reportable Non Employee (Comparison)



Non RIDDOR Reportable Non Employee

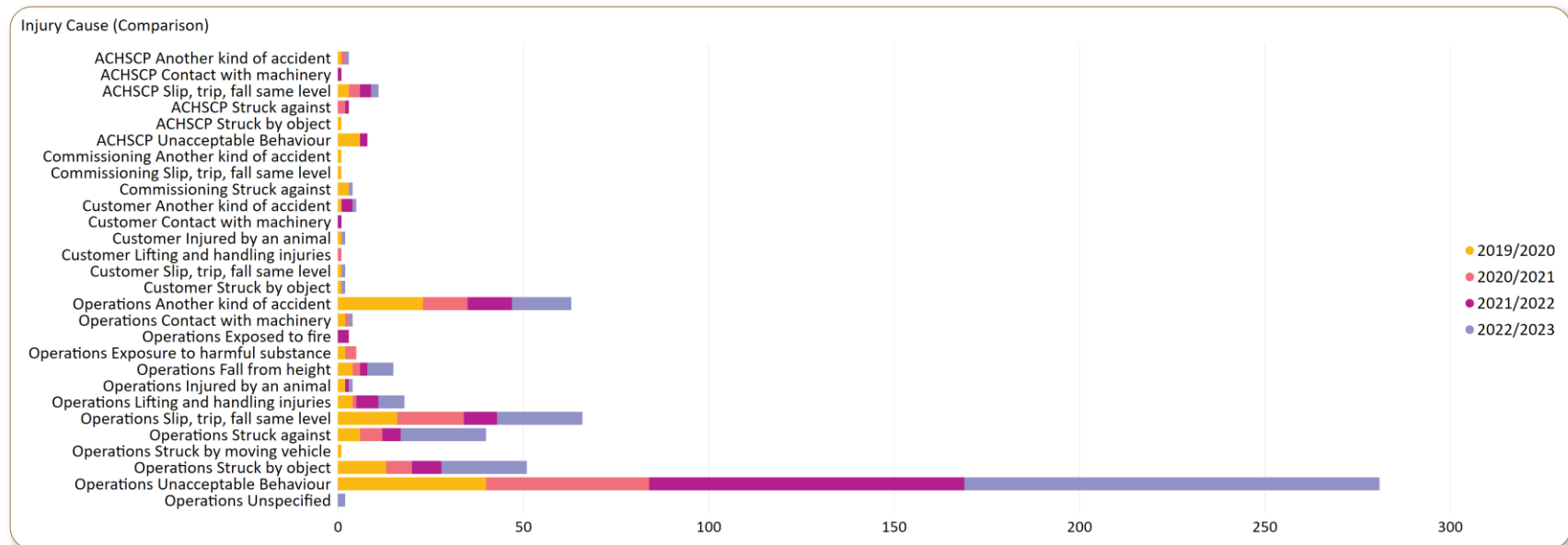
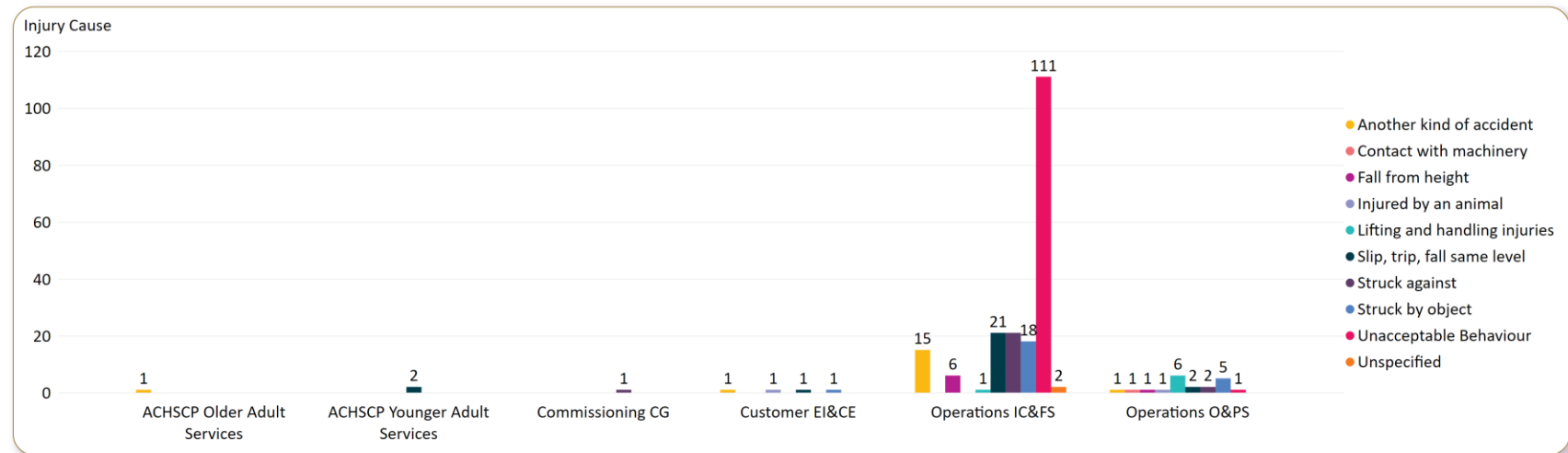


Non RIDDOR Reportable Non Employee (Comparison)



## H&S Incident Causation Reported between Jul to Sep 2022

The top table shows incident causation for each Cluster colour-coded against the key for this reporting period, and bottom table a quarter 2 comparison of the types of incidents from 2019/20 to 2022/23.

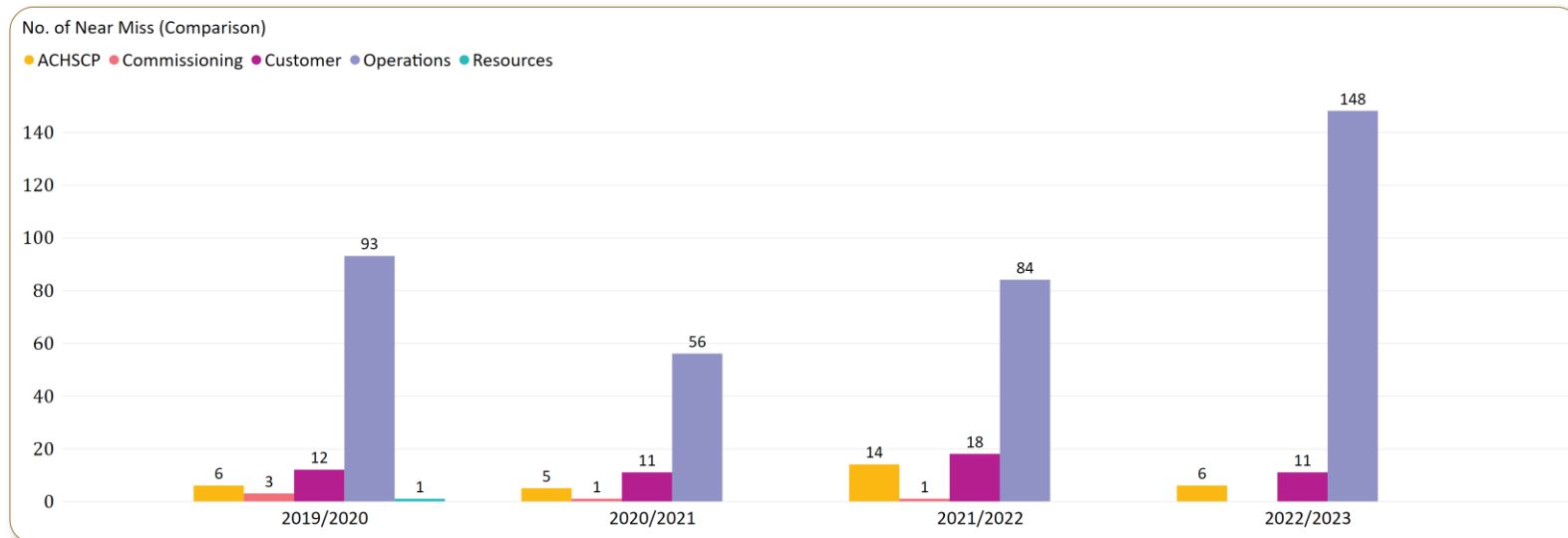
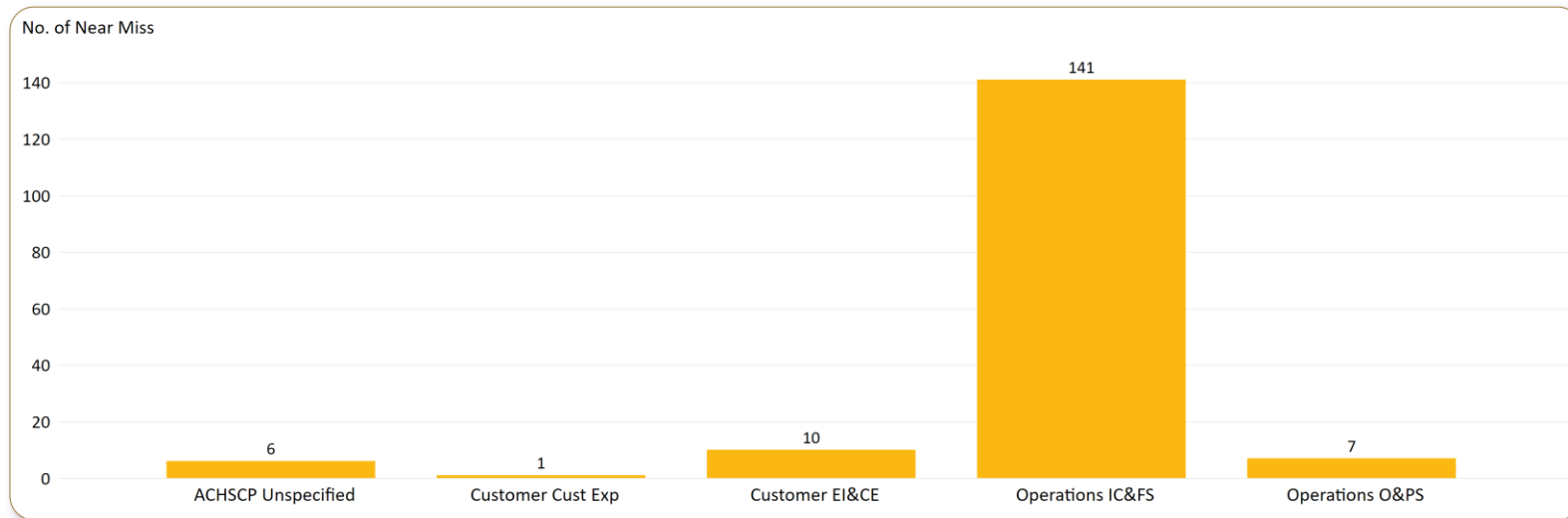




## Reported H&S Near Miss Between Jul to Sep 2022

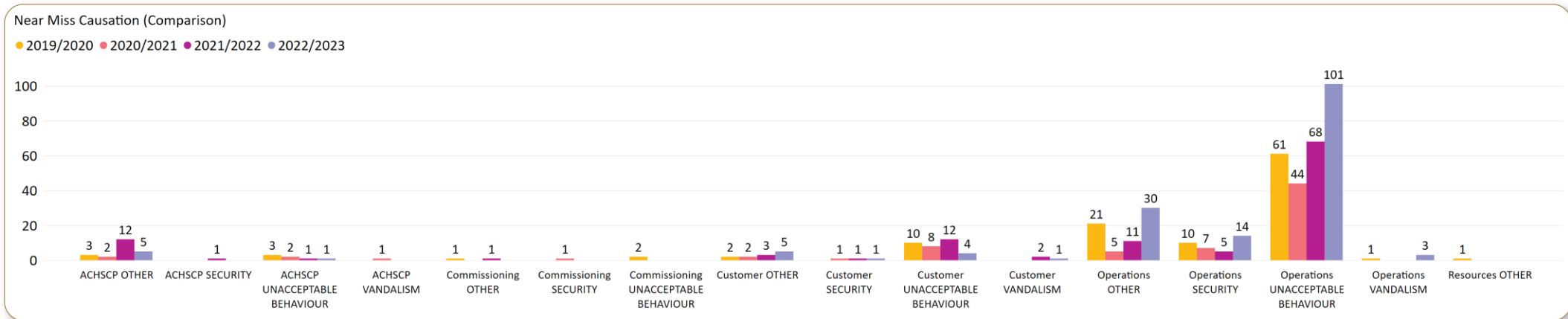
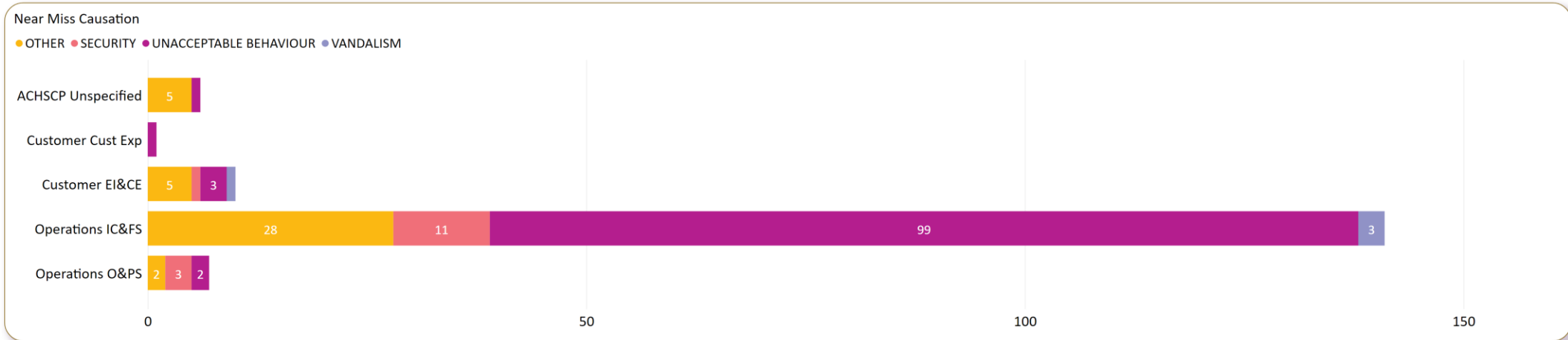
The tables below show information to a Function and Cluster level for employee and non-employee near misses.

Top table: Total near misses for this reporting period for each Cluster. Bottom table: quarter 2 comparison of near misses for each Function from 2019/20 to 2022/23.



## Reported H&S Near Miss (Causation) Between Jul to Sep 2022

The tables below show information to a Function and Cluster level for employee and non-employee near misses. Top table: Near miss causation for reporting period for each Cluster. Bottom table: Near miss causation quarter 2 comparison for each Cluster from 2019/20 to 2022/23.



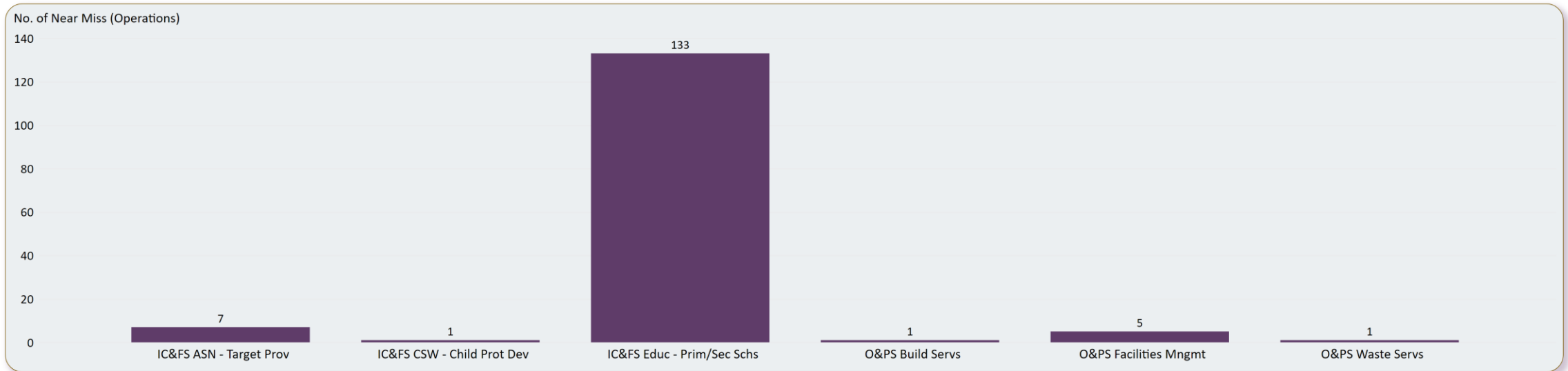
### Near Miss

Similar to incident information figures are highest as a result of children's distressed behaviours in Education. The increased numbers in comparison to the years which covered the Covid pandemic are most likely as a result of services returning to full face to face interaction with service users.



## Operations Reported H&S Near Miss Between Jul to Sep 2022

The following tables give a breakdown of **Operations** Near Miss down to service level.

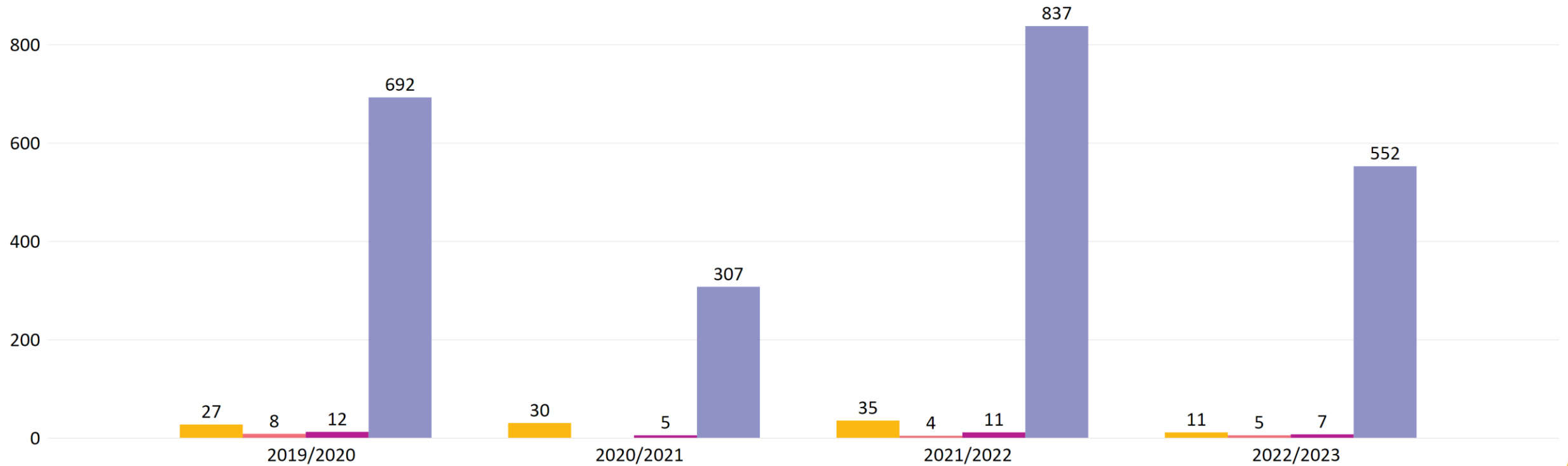


## Reported Incidents From 2019/20 to 2022/23 YTD

The table provides information on the **total number** of incidents for the last four reporting years (including current year to date) to Function level.

No. of Reported Incidents

● ACHSCP ● Commissioning ● Customer ● Operations



## Reported Near Miss From 2019/20 to 2022/23 (YTD)

The table provides information on the **total number** of near misses for the last four reporting years (including current year to date) to Function level.

