

# Proposed Layout

## Optimum Refurbishment (Band A)

The outline design has been developed to reflect the previous engagement undertaken with St Peter's business case, while considering the education design principles in section 3, page 33. A number of interventions are proposed in order to increase both the condition and the suitability from rating B to A.

These include the addition of an elevator to connect the ground floor, first floor and mid level circulation. The proposal also provides an alternative level access which connects the circulation loop without any change of level.

Overall, there are three proposed extensions that increase the overall internal area. These improve the form factor which in turn increases the energy performance of the building. The additional areas also provide opportunity to create more welcoming and flexible learning spaces.

Classrooms are rearranged around newly formed breakout spaces with retractable partitions and new rooflights. This encourages interaction not only between classes, but also between the various age groups within the school.

Toilet and changing facility provision will be addressed through the detail design.

### Essential Work

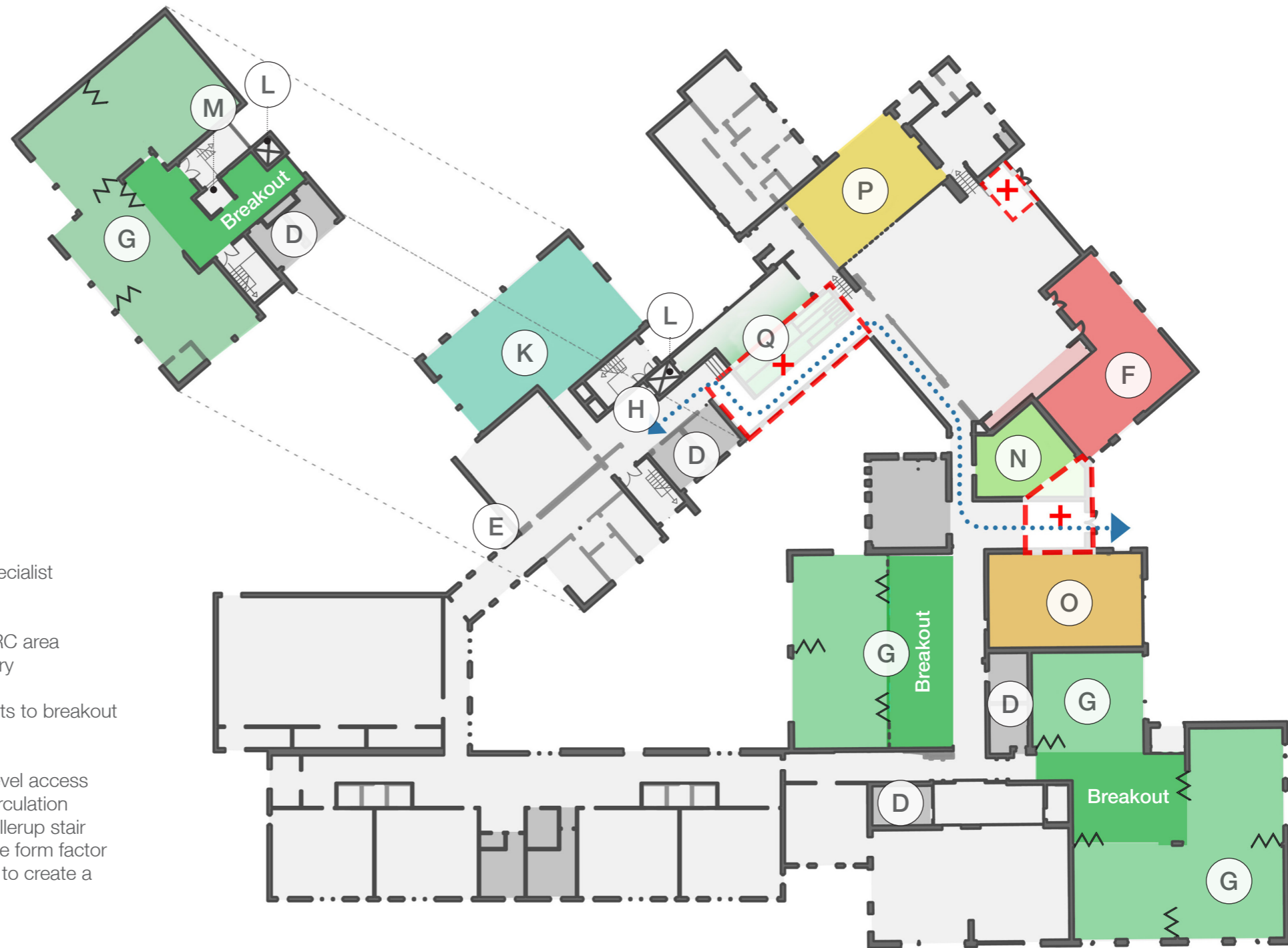
- (A) Asbestos removal
- (B) Drainage work
- (C) Replacement of leaking and pre 2021 windows
- (D) Refurbishment to toilets
- (E) New entrance door

### Highly Desirable

- (F) Increasing kitchen's size and adding a new servery
- (G) Optimising classroom sizes  
New teaching walls  
Adding breakout space
- (H) Refurbished cloak area
- (I) Upgrade to finishes

### Added Value

- (E) New entrance
- (G) Creating open classrooms by adding sliding walls
- (K) Partitions removed to create a visiting services hub
- (L) Adding a lift
- (M) Adding a stair lobby
- (N) Creating new staff space  
Improving the form factor by creating a new lobby (additional area)
- (O) Adding a specialist classroom
- (P) Refurbish LRC area  
Door to library
- (G) New rooflights to breakout areas
- (Q) Creating a level access  
Improving circulation  
Adding a Hellerup stair  
Improving the form factor  
Adding area to create a link corridor



# Landscape Strategy

## Proposed Landscape and Parking

The proposed landscape strategy reflects on the current problems with the external facilities provision at Riverbank School and aims to provide a newer and more suitable outdoor environment for the pupils.

Alterations to the car parking layout have been introduced to allow for a new bus and car drop off / pick up area. Further, the parking has been optimised and extended, accommodating for a total of 35 parking bays.

Access to the main entrance has been resurfaced and made accessible. A new bicycle storage has been provided in the proximity to encourage active travel to the school.

The design further proposes to resurface the outdoor play areas, to provide new play equipment and to include a new 3G pitch.

The strategy aims to achieve condition and suitability rating A, A.



### Key to external design upgrades

- (A) Proposed parking  
New drop off / pick up area  
On site bus drop off / pick up  
Optimised parking layout  
New bicycle storage  
Improved access
- (B) New landscaped entrance
- (C) New 60x40 3G pitch  
Improved access
- (D) Existing courtyard  
Improved layout  
Added new playing surface
- (E) Improved early learners' garden  
Resurfacing of playing areas