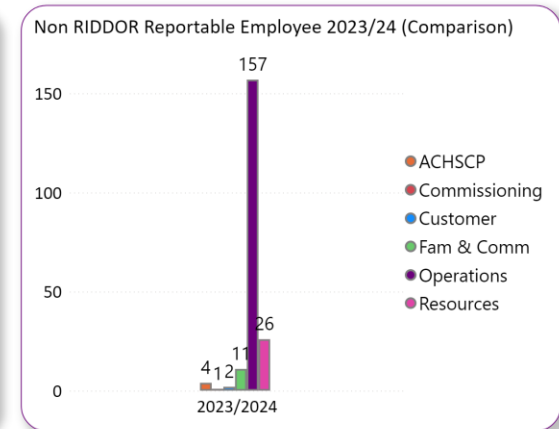
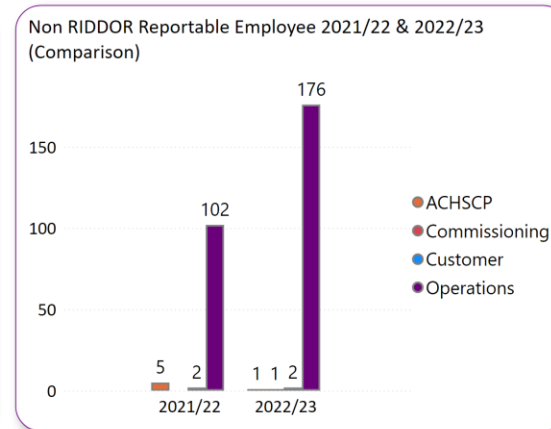
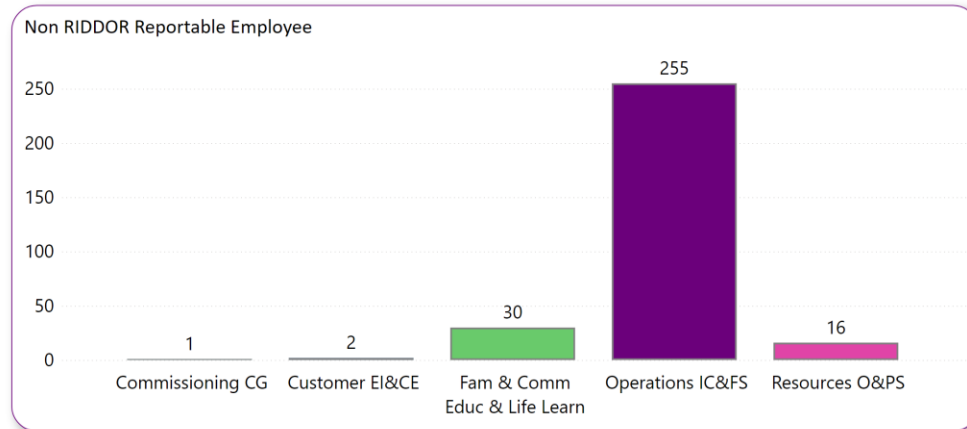
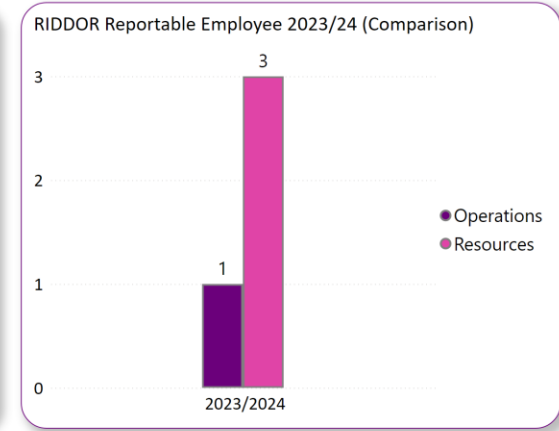
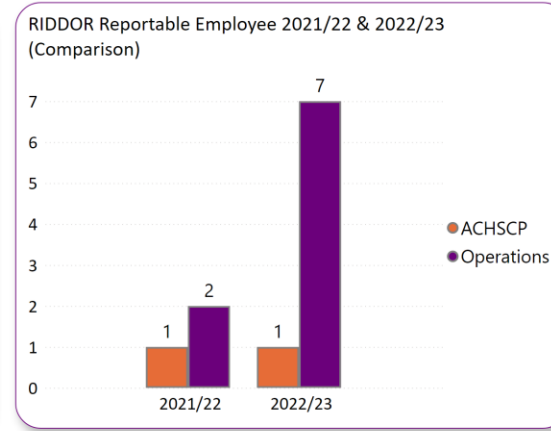
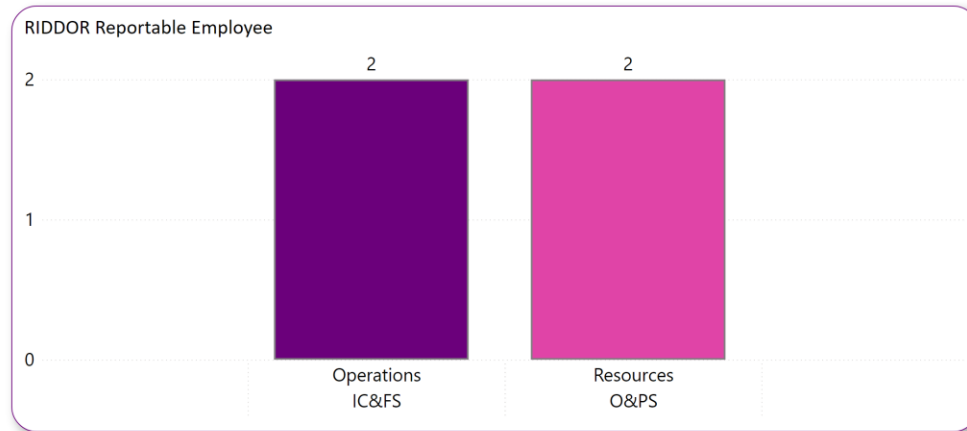


Reported H&S Incidents (Employee) Between Apr to Jun 2024

The following tables give breakdown of all employee incidents across all Functions and Clusters in Aberdeen City Council. The tables on the left initially show the number of incidents for each Cluster this reporting period with those tables on the right giving a quarter 1 comparison for each Function from 2021/22 to 2023/24 where applicable.



Employee Incident Information

RIDDOR reportable incidents were down from 8 in 2022/23 to 4 this year. The number of incidents has increased with majority in externalising behaviour and physical injury or violence in Education. These categories are both related to the behaviour of pupils against employees and result in the same consequences or injury type but would be what should be chosen by the reporting manager after they have had a conversation with the affected employee.