

Key to Electrics / mechanical

- Pendant Light Fitting
- Fluorescent light fitting
- Double Socket
- Light Switch
- Remote switched power outlet
- Optical smoke detector wired to mains. All detectors to be interlinked.
- Ionisation smoke detector wired to mains. All detectors to be interlinked.
- Heat detector wired to mains. All detectors to be interlinked.
- Carbon Monoxide detector.
- Panel Heater
- Mechanical Extract

- Illuminated Emergency Exit sign - T1
- Illuminated Emergency Exit sign - T2
- Illuminated Emergency Exit sign - T3
- Glow in Dark Emergency Exit sign - T4

- Fire Extinguisher - 4 KG Powder
- Fire Extinguisher - 2 KG CO²
- Fire Extinguisher - 4 KG Water
- Fire Blanket

- Call Point
- Sounder

Any emergency lighting to be supplied by a fire protected circuit.

All cables, wiring etc located above the suspended ceiling to be securely fixed to, and supported by, metal cable trays.

All means of ventilation to comply with standard 3.14 or the CIBSE guide B.

Finishes to the food preparation area.

Wall - Aqua panels upto a height of 2.1m with slate finish from 2.1m to the underside of the ceiling.

Floor - Vinyl Gerflor.

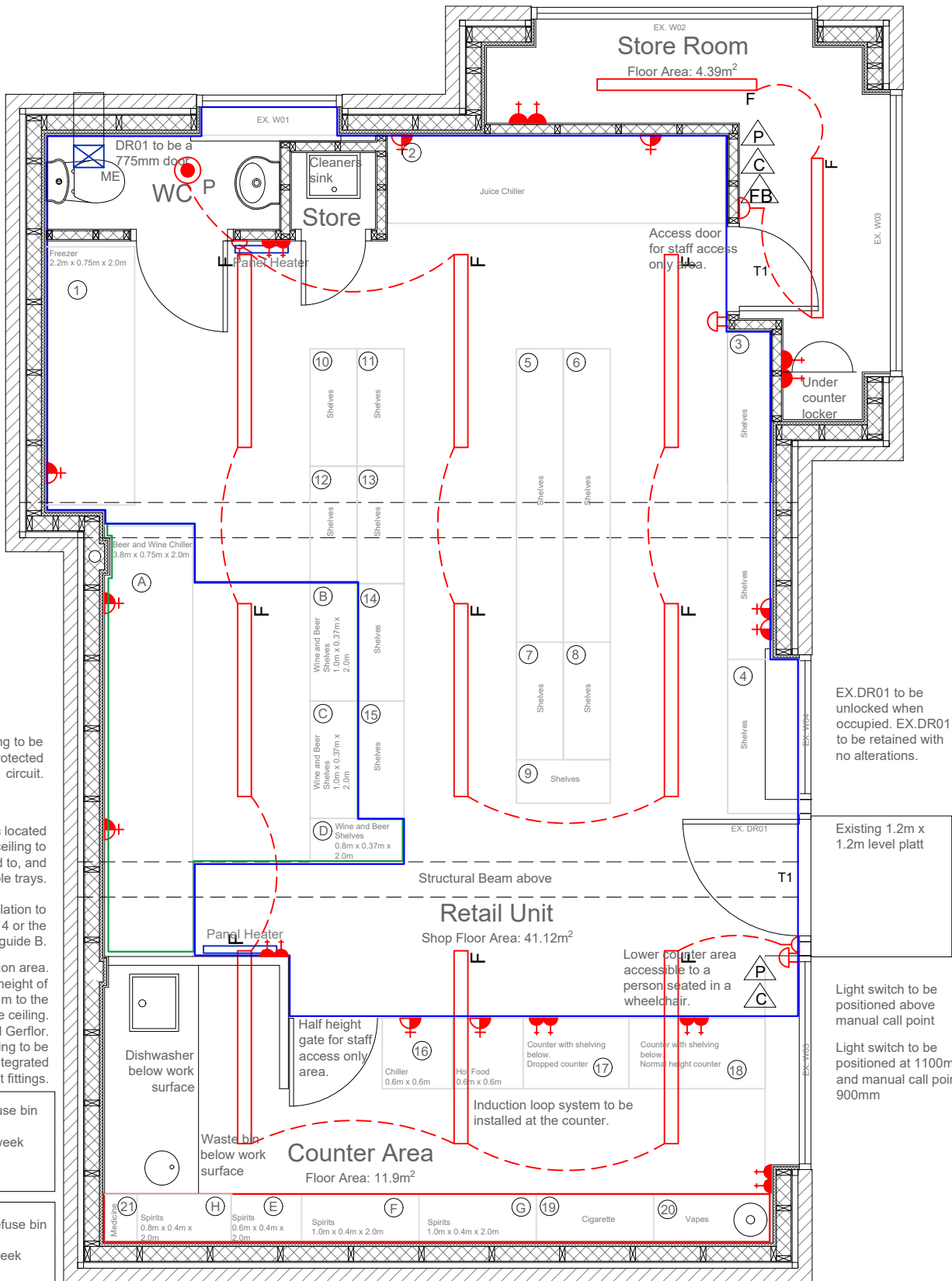
Ceiling - New suspended ceiling to be 600mm x 600mm grid with integrated light fittings.

Mixed waste refuse bin 660l.
Pick up once a week

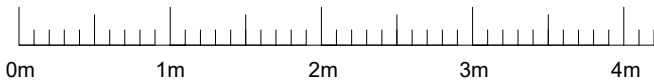
Recycle waste refuse bin 1110l
Pick up once a week

Category L4 system to be installed. L4 detectors are installed in those parts of the escape routes comprising circulation areas and circulation spaces, such as corridors and stairways. The system must fully comply with the recommendations of BS 5839: Part 1: 2017.

Main contractor to supply details of actual system installed to Building Control Inspector prior to installation.



Proposed Licensing Plan
Scale 1:50



These drawings are to be read in conjunction with:
AD 1717 / 01, 02, 03, 04 & 05

Red line indicates inaccessible alcohol display area

Green line indicates accessible alcohol display area

Blue line indicates accessible area

The premises is for the sale of alcohol. There will not be any alcohol consumed on the premises.

01 Accessible Alcohol Display Area (Indicated by Green Line)

		Width	Height	Frontage Area
A	Chiller	3.8m	x 2.0m	= 7.6m ²
B	Shelving	1.0m	x 2.0m	= 2.0m ²
C	Shelving	1.0m	x 2.0m	= 2.0m ²
D	Shelving	0.8m	x 2.0m	= 1.6m ²

Total Accessible Display Area: = 13.2m²

02 Inaccessible Alcohol Display Area (Indicated by Red Line)

		Width	Height	Frontage Area
E	Shelving	0.6m	x 2.0m	= 1.2m ²
F	Shelving	1.0m	x 2.0m	= 2.0m ²
G	Shelving	1.0m	x 2.0m	= 2.0m ²
H	Shelving	0.8m	x 2.0m	= 1.6m ²

Total Inaccessible Display Area: = 6.8m²

Total Alcohol Display Area = 20.0m²

Percentage of Display Area that is Alcohol = 36.15%

03 General Shelving

		Width	Height	Frontage Area
1	Freezer	2.2m	x 2.1m	= 4.62m ²
2	Juice Chiller	2.8m	x 2.1m	= 5.88m ²
3	Shelving	3m	x 2.1m	= 6.3m ²
4	Shelving	1.25m	x 2.1m	= 2.62m ²
5	Shelving	2.5m	x 2.1m	= 5.25m ²
6	Shelving	2.5m	x 2.1m	= 5.25m ²
7	Shelving	1.0m	x 2.1m	= 2.1m ²
8	Shelving	1.0m	x 2.1m	= 2.1m ²
9	Shelving	0.8m	x 2.1m	= 1.68m ²
10	Shelving	1.0m	x 2.1m	= 2.1m ²

Total Display Area:

Revision G	Issued to Client	04.04.25	AB
Revision F	Issued to Client	11.03.25	AB
Revision E	Issued to Client	10.03.25	AB
Revision D	Issued to Client for Comments	05.03.25	AB
Revision C	Issued to Client for Comments	24.01.25	AB
Revision B	Issued to Client for Comments	11.07.24	AB
Revision A	Issued to Client for Comments	07.05.24	RS

Project:
Development at Unit 38, 43 Mill Drive,
Riverside Quarter, Muggiemoss, Aberdeen,
AB21 9FS

Drawing Title:
Proposed Licencing Plan

Scale:
1 : 50 @ A3

Date:
7th May 2024

Drawn:
RS

Drawing Number:
AD 1717 / 06 Rev G

This drawing is the property of All Design (Scotland) Limited. Copyright is reserved by All Design (Scotland) Limited and the drawing is issued on the condition that it is not copied either wholly or in part without the consent in writing of All Design (Scotland) Limited.

Figured dimensions take preference. Do not scale from this drawing. All dimensions to be checked on site by Main Contractor before commencement of any work, shop drawings or manufacture of components. Dimensions are in millimetres unless otherwise specified. Any discrepancies to be referred to this office for decision. This drawing is to be read in conjunction with the specification (when applicable). All drainage lines are assumed until verified on site by Main Contractor.

For kitchen and utility units, all dimensions (plan and vertical) must be taken on site prior to manufacture by kitchen and utility unit manufacturer.

Total Shop Floor Area	= 53.02m ²
Shop Floor Area	= 41.12m ²
Counter Floor Area	= 11.9m ²
Store Floor Area	= 4.39m ²
Total Display Area in Shop	= 55.32m ²
01 Accessible Alcohol Display Area	= 13.2m ²
02 Inaccessible Alcohol Display Area	= 6.8m ²
Total Alcohol Display Area	= 20.0m ²
Percentage of Display Area that is Alcohol	= 36.15%

		Width	Height	Frontage Area
11	Shelving	1.0m	x 2.1m	= 2.1m ²
12	Shelving	1.0m	x 2.1m	= 2.1m ²
13	Shelving	1.0m	x 2.1m	= 2.1m ²
14	Shelving	1.0m	x 2.1m	= 2.1m ²
15	Shelving	1.0m	x 2.1m	= 2.1m ²
16	Chiller	0.6m	x 0.1m	= 0.06m ²
17	Shelving	0.9m	x 0.7m	= 0.63m ²
18	Shelving	1.1m	x 0.9m	= 0.99m ²
19	Shelving	1.0m	x 2.1m	= 2.1m ²
20	Shelving	1.0m	x 2.1m	= 2.1m ²
21	Shelving	0.27m	x 2.1m	= 0.56m ²
22	Shelving	0.8m	x 2.1m	= 1.68m ²

All Design Architectural Services

Aberdeen Innovation Park
Campus 2, James Gregory Centre
Bridge of Don, Aberdeen, AB22 8GU

Telephone: 01224 701576
Website: www.all-design.co.uk

